



STRATSTONE OF WILMSLOW



PATEK PHILIPPE  
GENEVE

Begin your own tradition.

Something truly precious  
holds its beauty forever.



Twenty-4® steel Ref. 4910/10A, white gold ring and earrings.

cottrills

13 WATER LANE, WILMSLOW, SK9 5AE T: 01625 416330  
cottrills.com





  
**MOODYS**  
— 1883 —



Dot-Dash Eternity Rings - 18ct Rose Gold, Princess-Cut & Baguette-Cut Diamonds  
(3-row ring) 3.49cts £10200, (2-row ring) 2.32cts £7400

[WWW.MOODYS1883.COM](http://WWW.MOODYS1883.COM)

14 PILLORY STREET NANTWICH CHESHIRE CW5 5BD TELEPHONE: 01270 611707/611808

  
**ROLEX**

GEORG JENSEN

LALIQUE

MIKIMOTO

BREMONT  
WATCH COMPANY

PAUL SPURGEON  
DESIGNER JEWELLER

**MONT  
BLANC**

  
STEPHEN WEBSTER



# CONTENTS

Stratstone: UK's leading luxury automotive retailer .....	13
Stratstone: A Proud Heritage.....	17
Stratstone Club .....	25
Stratstone Opening Times .....	27
Aston Martin: DBS Volante .....	29
Stratstone Aftersales: Service Centres .....	39
Stratstone Aftersales: Parts.....	41
Stratstone Aftersales: Accident Repair Centres.....	43
Aston Martin DBS.....	49
Aston Martin DB9.....	57
Stratstone Corporate Sales .....	63
Stratstone and Charities .....	69
Aston Martin: V12 Vantage .....	73
Stratstone Experiences .....	81
Aston Martin: V8 Vantage .....	85
Stuart Hall: the beauty of the DBS Volante.....	95
Aston Martin: V8 Vantage Roadster.....	103
Le Mans 24 hr Race with Stratstone Experiences.....	109
Aston Martin DB5.....	111
Aston Martin Rapide.....	115
Aston Martin Today.....	127
Aston Martin Life .....	131
The Collection.....	147
Aston Martins featured in James Bond Films .....	149
Aston Martin Design Studio.....	153
DB9: The Definitive Sports Grand Tourer .....	167
Lagonda .....	171
Aston Martin One-77.....	177
Cholmondeley Pageant of Power .....	188
Aston Martin Facts.....	201

# FOREWORD



Welcome to the Stratstone Aston Martin Wilmslow publication, which I hope will give you an insight into our dealership along with the latest manufacturer news.

Aston Martin Lagonda is a marque revered around the world as representing the pinnacle in automotive sophistication, luxury and outright performance. The sports cars we offer, with the accompanying mystique and charisma, are produced to reflect the exclusivity that accompanies the name of the brand.

It is fair to say that we have never been able to offer such a strong model line up. Aston Martin's rich and evocative history has been brought to life through a succession of iconic sports cars. We will never forget our past successes but remain greatly excited about the future.

This year sees the addition of the stunning new Rapide four door coupe. For those of you that have yet to drive this new creation; it is a beautifully constructed and well developed sports car that is utterly engaging to thread down a country road. We are very proud of the finished product and would encourage you to seek out a demonstration..

The excitement continues with the development of what is possibly the world's most desirable automotive art form; the One 77. And if you haven't yet felt the breathtaking punch of the V12 Vantage, be quick. The production run remains open for a very limited period.

I do hope you enjoy reading the magazine and look forward to seeing you in the dealership soon.





## Coutts & Co

**Coutts opened its Manchester office in November 1993, followed ten years later by the arrival of Coutts' Liverpool office in November 2003. Together the two offices have 15 Private Bankers who provide a personal and local service to our clients across the North West.**

To achieve the elusive quality of timelessness, a brand needs to be absolutely true to itself, while moving relentlessly forward so that it remains relevant to each new generation of clients. At least, that would be the Coutts formula for success.

Throughout the bank's 300 year history, its fundamental values have never shifted. From the time John Campbell started his business as a goldsmith banker at the sign of the Three Crowns in the Strand, a tradition of personal service based upon trust, understanding and expertise has been continuously maintained - and appreciated by successive generations of clients.

Meanwhile, of course, the business itself has grown and evolved almost beyond recognition. But to this day, what sets Coutts apart is the ability to provide clients with a truly individual wealth management service, reflecting an exceptional understanding of the worlds they move in, both personally and professionally.

At Coutts, the criteria for new clients to open an account is around £1m in investable assets, but this is very much a guideline as Coutts will always look at working with successful people, perhaps those in the earlier stages of their career, still in the process of accumulating their wealth.

The number of clients that Coutts private bankers look after is kept deliberately low in order to ensure that we are delivering on our aim to provide true personal service.

Coutts has always attracted an extraordinary variety of fascinating and often distinguished people, with whom it has nurtured long and satisfying relationships. In times gone by, these have included Charles Dickens, Sir Joshua Reynolds and Charles Darwin.

But today the clients looked after by Coutts private bankers are no less inspirational and diverse, ranging from industry leaders to some of the best-known names in the worlds of sport and entertainment.

The North West is home to approximately 30,000 high net worth individuals and managing the wealth of such a broad range of clients requires a high level of expertise.

Whether you are an entrepreneur selling a business, an executive with substantial share options, a professional with little time to spare, a divorcee or someone who has inherited or won the lottery, the dilemma remains the same: Where are your assets best placed through this difficult economic climate? How, in this period of low interest rates, do you invest your wealth in order to provide you with the things you want or will need in the future?

A private banker's first step is to win the client's trust, understand their goals, and gain a real understanding of the world in which their client lives.

They must be consummate listeners, and will analyse the facts and discuss possible solutions.

They will look at a client's time horizon and attitude to risk and then, with the support of a team of experts across a wide variety of fields, they can deliver the most appropriate investment wealth protection and estate management services as well as banking.

Coutts investment philosophy is based on understanding our clients' financial objectives in order to design an investment strategy to meet their wealth goals. We give them access to world-class investment managers, including specialist hedge fund managers, and provide expertise through our discretionary and advisory services.

Underpinning our investment approach are the tactical adjustments we make to the asset allocation which aim to improve the performance of our clients' portfolios.

We can also provide a range of structured investment products, including capital protected deposits and liquidity management. Coutts is a dynamic and modern private bank which maintains its tradition of offering a very personal wealth management service to a range of diverse and fascinating clients.



If you are interested in becoming a client, please contact **Dylan Williams** at: **dylan.williams@coutts.com** or call: **0161 930 8040**

Coutts & Co is authorised and requested by the Financial Services Authority. Calls may be recorded.



One-77, the definitive Aston Martin, is the ultimate expression of what the marque stands for: a combination of craftsmanship, design, modern technology, and the ultimate in exclusivity, to create the world's most desirable automotive art form.



YOUR OWN PRIVATE AIRLINE

+44 (0) 20 7361 9620

NETJETS

CAROUSELS ARE FOR BAGGAGE, NOT PEOPLE.

No queues or lounges. No walkways or gates.  
If your time is too valuable to waste in airports,  
perhaps it's time to start flying on your own terms.

ASTONMMC@NETJETSEUROPE.COM



## STRATSTONE IS THE UK'S LEADING LUXURY AUTOMOTIVE RETAILER

Stratstone has been offering unrivalled, personalised service since the company was founded in 1921. It has been a great success story, made possible by the relationships Stratstone has forged with its key partners and customers.

At Stratstone we are really proud of our relationships with the world's leading automotive manufacturers. We have long standing associations in line with our Core Values, and are able to retail fantastic products and services.







## Trou aux Biches To Be Reborn

On the 1st November 2010, Mauritius looks set to dazzle with the hotly anticipated arrival of Beachcomber Hotel's new-look Trou aux Biches.

Having impressed guests for generations with its signature warm Mauritian style and charming atmosphere, Trou Aux Biches will re-open with a completely new look this winter, ready for you to enjoy the ultimate in privacy, space and serenity, surrounded by nature in one of the most magical spots on the island.

Set in a palm-shaded grove in the Northern region of Mauritius, Trou aux Biches sits along one of the best beaches on the island, with two kilometers of white sand and crystal clear waters setting the stage for blazing sunsets, one of the most stunning seascapes on the island.

Accommodation at the new Trou aux Biches will offer the perfect combination of tropical elegance and modernity. A collection of Pavilions sit in crescents throughout a shady palm grove, each comprising three to four spacious Suites. Some Suites will be equipped with outdoor showers, tucked

away amongst tropical greenery adding a touch of romance.

All Suites will be spacious and sophisticated, with elegant design and furnishings. For added wow-factor, the Beach Front Suites will have private pools and enjoy prime sea front locations.

In addition to the Suite accommodation, the resort will offer 27 stunning two- and three-bedroom Villas which will represent the last word in luxury island living. Ensuring privacy, the Villas have been carefully spaced within the tropical grounds to offer optimum tranquility.

Each Villa is designed around a spacious open-air living area, with a free form infinity edge swimming pool and large sun-drenched deck.

An outdoor barbecue and dining area invite you to enjoy pleasant dining under the stars, and outdoor showers and deep-soak bath tubs continue the al-fresco theme. Villa guests also have direct access to the services of a dedicated private butler to ensure that their every need is met.

A choice of six fabulous restaurants will tempt tastebuds, meaning you are truly spoilt for choice every day of your holiday. From the authentic Thai and Indian restaurants to refined European gourmet cuisine, beach BBQs and local delicacies, Trou aux Biches will offer the highest quality dining in Mauritius.

For sundowners and cooling refreshments, Oasis Bar will specialise in fruity tropical cocktails and delicious homemade snacks, whilst Caravelle Bar, set on the beach, will be a stylish spot to enjoy aperitifs, a glass of champagne or a maybe a cigar from the extensive selection.

The new Spa will comprise a string of individual thatched pavilions quietly tucked away amidst palm trees and exotic plants, centred around a tranquil pool. Treatments will be with the classically luxurious Clarins brand, and the spa will be equipped with space for a variety of specialized treatments.

A whole host of land and water sports will keep active guests more than entertained, including mountain biking, yoga, bocciball, beach volleyball, windsurfing, sailing, kayaking, pedal boats, deep sea fishing, snorkeling and scuba diving. There will also be 6 floodlit tennis courts and a state-of-the-art sports centre dedicated to fitness, offering body-building and cardio equipment plus spinning and aerobics classes.

Parents will be delighted at the fantastic children's facilities on offer at Trou aux Biches, making family holidays a breeze. A Bob Marlin Mini-Club featuring its own restaurant for children aged 3-12 years will operate alongside a teens club for older children.

Fun activities include glass bottomed boat excursions, hand painting, sailing, small-line fishing, snorkeling, tennis and waterskiing, offered on an age-appropriate basis and of course expertly supervised by fully qualified staff.

7 nights in a Junior Suite on a halfboard basis including Economy Class flights with Air Mauritius and private hotel transfers from £1787 per person sharing.

**To book call Beachcomber on 01483 445 685 or log onto [www.beachcombertours.co.uk](http://www.beachcombertours.co.uk)**



**beachcomber**  
HOTELS





The most prestigious names in furniture

DURESTA

25th  
Anniversary  
Established 1985 - 2010

MANCHESTER -  
END OF M602 - A57, REGENT ROAD,  
SALFORD M5 4EA  
TEL: 0161 875 4070

OPEN 7 DAYS A WEEK  
LATE NIGHTS TUESDAY, & THURSDAY

Cousins  
FURNITURE  
www.cousinsfurniture.co.uk



## STRATSTONE HAS A PROUD HERITAGE DATING BACK TO 1921

Motor enthusiasts Undecimus Stratton and Ernest Instone established the company to offer unrivalled personalised service to its customers.

Now as Europe's largest luxury automotive retail network, Stratstone upholds the values of its founders and prides itself on providing the very highest standards of quality service in Stratstone style.

### 1920s – Stratton-Instone Limited formed in 1921

Stratton and Instone went into partnership and assumed control of the Daimler Company's London premises heralding the arrival of the motor distribution system as we know it today.

### 1930s – Joseph Mackle assumes control in 1929

When our founders passed away Joseph Mackle, a former engineer with Daimler, took control and renamed the company Stratstone Limited.

### Business booms in Stratstone style

Business surged following the launch of the Light 15 Daimlers. Stratstone extended its operations in England and Stratstone style became very much what it is today. Number 27 Pall Mall, London became a popular rendezvous for the growing list of wealthy and famous customers, particularly as a butler served champagne at a given time each morning.

### The Stratstone Royal Connection

The Royal Warrant, first gained in 1921 was held by Stratstone until a change of ownership in 1982.

In the thirties' slump in England the government considered that national interest in cars might be stimulated if the King had a new fleet. Stratstone was commissioned to supply six new limousines to King George V.

### 1940s, 1950s, 1960s – Stratstone acquired by the Thomas Tilling Group in 1938

Following its acquisition and with war becoming likely, the leases on the Pall Mall and Euston Road Premises were not renewed and the head office was relocated to Berkeley Street.

### Stratstone' change of venue during the war

During the war the Berkeley Street showroom was requisitioned by the Royal Air Force. As no cars were >>





being manufactured, there was urgent demand for large cars that could be converted to ambulances. The company undertook these conversions, while smaller cars were sold to the police.

#### 1970s – Stratstone expand in 1971

Stratstone expanded taking over a London service depot at Willsden, providing a specialist service north of the river.

Throughout the 1970s rapidly rising inflation in England took its toll and tough measures had to be taken to cope with its effect on Stratstone. A fleet sales department was set up in 1973 to supply limousines to top companies, embassies and foreign governments together with the special requests of the funeral profession.

#### 1980s – James Smillie takes the helm

James Smillie the Managing Director successfully acquired the equity and in 1982 Stratstone Limited became a private company after a break of 46 years.

#### Stratstone sets the standard

1988 saw the largest and most advanced service centre in Britain open at Grays Inn Road, London WC 1. There

were 24 work bays covering an area of 279 square metres and occupying two floors, with a retail and trade counter. Stratstone commenced work to completely refurbish the Berkeley Street showroom. The decor reflected the elegance of bygone days and at the same time complemented the image of the high quality modern products it represented; this Stratstone style has been an aspect of the brand that has been maintained to this day.

#### 1990s – Stratstone has national coverage

In 1992 Stratstone grew through acquisition to become the largest luxury retailer in the UK.

**Today** – The Stratstone brand sits proudly along side over 20 of the world's premium automotive manufacturers. Stratstone delivers fantastic products and outstanding service in our unique Stratstone style showroom environments.

Stratstone has national coverage and this scale affords the group great opportunities to share its best practice and expertise of the luxury and specialist car markets and offer the Stratstone experience countrywide.



ph. Andrea Pincino

DARK to LIGHT



www.vgnewtrend.it



design provision

kc@designprovision.co.uk

+44 781 248 0349 agent for the UK & Ireland

concept and design by  
Vincenzo Antonuccio  
& Marilena Calbini







## ASTON MARTIN INTRODUCES V8 VANTAGE N420

- New Special Edition, motorsport-inspired V8 Vantage
- Standard equipment includes Sports Pack suspension and new sports exhaust system
- 27kg weight saving over standard car
- New distinctive Aston Martin 'Race Collection' paint schemes available as an option

Aston Martin has unveiled a new motorsport-inspired special edition; the V8 Vantage N420 which brings a new dimension of sporting prowess and dynamic ability to the V8 Vantage range.

Successor to the special edition V8 Vantage N400 of 2007, the Vantage N420 is based upon the standard 4.7-litre, 420bhp, 180mph V8 Vantage and is available as a Coupe or Roadster, and with a six-speed manual or optional Sportshift automated manual transmission.

The Vantage N420 draws inspiration from the company's experiences at the Nürburgring 24-hour race. In the 2006 running of the annual Nürburgring endurance classic amongst a field of mostly motorsport homologated cars, Aston Martin entered a near-



standard, road-registered V8 Vantage. Driven by a team of employees, including Aston Martin's CEO, Dr Ulrich Bez, the V8 Vantage – named 'Rose' by the team – finished 4th in class and 24th overall from a field of more than 200 specialised racing cars.

Since then Aston Martin has returned every year to compete in this gruelling endurance race, scoring a string

of class victories and podiums with road-registered V8 and V12 Vantages and most recently the new four-door Rapide. Not only has this racing success spawned a burgeoning V8 Vantage GT4 customer programme run by Aston Martin Racing, but lessons learned in racing at the Nürburgring has led to aerodynamic and other performance developments being fed back into Aston Martin's road cars.



Mah Jong Modular Sofa  
**MISSONI** HOME fabrics  
 Design Hans Hopfer  
 Les Contemporains Collection

Showrooms,  
 collections,  
 news and catalogues  
[www.roche-bobois.com](http://www.roche-bobois.com)

**MANCHESTER M4 5AG**  
 Tel: 0161 236 1517

**HARRODS**  
**LONDON HAMPSTEAD**  
**LONDON WANDSWORTH**  
**WALTON ON THAMES**

Expressing your interior world

**rochebobois**  
 PARIS



# 50 years of Italian design



## 2010 COLLECTION - ITALIAN DESIGNED FURNITURE TO FASHION YOUR HOME

Since 1959 we've been designing and creating living areas able to express beauty and harmony with a high added value: comfort designed & made in Italy. At our Centro Stile we never stop searching for evolving ideas that are bound to turn a room into your ideal and personal space. Come and discover our new collection.

**ABITARE**  
designing home

21 Caroline Street, Wigan, Lancashire, WN3 4EL  
T 01942 248 842 [www.abitareuk.com](http://www.abitareuk.com)

**NATUZZI**  
It's how you live



A generous standard specification and some unique options ensure the special edition Vantage N420 is both exclusive and distinctive, while also offering a 27kg weight saving – achieved through the application of carbon fibre – over the standard V8 Vantage.

On the outside, wider sills combine perfectly with a carbon fibre splitter, side strakes and diffuser, while bold 10-spoke diamond turned alloy wheels complete with gloss black finish, black mesh vents and 'Graphitic' tailpipe finishers complete the co-ordinated look.

Inside the Vantage N420 offers an Iridium interior package, with graphite instruments, leather or Alcantara® steering wheel, special N420 sill plaques and lightweight carbon fibre seats, complete with 'Race Track' stitching as in the V12 Vantage. Bluetooth connectivity, cruise control and Park Distance Control are also standard.

Cementing the Vantage N420's credentials as a special edition V8 Vantage tailored for the most discerning and



enthusiastic drivers, it is fitted with the normally optional Sports Pack. This package combines revised springs, dampers and anti-roll bars for even more responsive and dynamic handling, while retaining the V8 Vantage's renowned poise, balance and long distance ability. Finally, a new sports exhaust system delivers a suitably rousing soundtrack.

A further distinctive feature is the availability of a new range of optional Aston Martin 'Race Collection' paint schemes. Pairing bold body colours with contrasting hues for the cant rails and radiator grille surround, they celebrate the marque's racing heritage. All of the company's successful N24 Vantage racers are celebrated, with 'Rose' yellow, 'Kermit' green and 'Elwood' blue all featuring in the collection along with traditional Aston Martin Racing green.

Production of the V8 Vantage N420 begins this month, with deliveries commencing in August and prices starting from £96,995.







Blakes was created by Anouska Hempel, the internationally renowned British designer. The hotel is now established as totally unique, and is the model for the 'fashionable small hotel' in London and cities around the world. Blakes is a personal statement about what design can achieve. The colour scheme is daring, stunning and dramatic, offering style and elegance. Blakes has always maintained its position as unique and original. Respected for protecting the privacy of its clients against the paparazzi, it is the London base of film stars, musicians and all the top designers earning the reputation as the 'couture hotel'.

# BLAKES

London

Blakes Hotel | 33 Roland Gardens | London | SW7 3PF | England  
[www.anouskahempeldesign.com](http://www.anouskahempeldesign.com) | Tel +44(0)20 7370 6701 | Fax +44(0)20 7373 0442  
[www.blakeshotels.com](http://www.blakeshotels.com)

## STRATSTONE CLUB

As part of your experience of the Stratstone service we are keen to reward customer loyalty by offering additional opportunities to enjoy your purchase.

The Club is available to any and every customer that buys a vehicle from Stratstone.

Our aim is to offer unique experiences to our customers in Stratstone style. We organise and deliver Stratstone quality events and lifestyle products in line with our customers' interests.

We want to build a relationship with you, and in turn enable you to meet other like minded Club Members.

We are constantly growing and updating the Club, offering new events and initiatives.



## OUR CULTURE

Our culture is about the way we operate as an organisation.

Stratstone operates within a framework of 5 core values:

- our team members**
- our customers**
- our suppliers**
- our manufactures**
- our shareholders**

A balance of all of these stakeholders is paramount in the success of our business.

These values are the backbone of our culture and it is the responsibility of our team members to know and understand our 5 core values.







# The coolest bar over the world.

When you experience the Emirates A380 onboard Lounge it's easy to forget you're in the air and not relaxing in one of the city's coolest bars. And with complimentary Chauffeur-drive and a dedicated airport lounge, the Emirates A380 is the ultimate VIP experience. Daily from Manchester starting 1st September.

The Emirates A380 with onboard Lounge. Fly Emirates. Keep discovering.



[emirates.com/uk](http://emirates.com/uk)

Over 400 international awards and over 100 destinations worldwide. The A380 operates on selected services from Manchester. Products and services shown are available for First Class and Business Class passengers. Mileage restrictions apply to Chauffeur-drive. To book or for more information, visit [emirates.com/uk](http://emirates.com/uk) or your travel agent.



## ASTON MARTIN

The name Aston Martin needs little introduction, it has long represented the classic tradition of civilised high performance sports cars.

Each vehicle is designed and built by skilled craftsmen underpinning the long tradition of hand-crafted quality. This attention to detail combined with leading edge technology ensures every driver experiences the perfect combination of innovation, ultimate power and sublime luxury.

## STRATSTONE

Water Lane  
Wilmslow  
Cheshire  
SK9 5BQ

Telephone: 01625 543 030

Fax: 01625 526 873

Email: [wilmslowastonmartin@stratstone.com](mailto:wilmslowastonmartin@stratstone.com)

## OPENING TIMES

Monday	08:30 - 18:00
Tuesday	08:30 - 18:00
Wednesday	08:30 - 18:00
Thursday	08:30 - 18:00
Friday	08:30 - 18:00
Saturday	09:00 - 17:00
Sunday	11:00 - 16:00



Published by: Market Media Consultancy, Starline House, 130 Mowbray Drive, Blackpool, Lancs FY3 7UR Tel: 01253 319882/3 Fax: 01253 319884

## DISCLAIMER

No part of this publication may be copied or reproduced in any form or by any means, electronic, mechanical, photocopy or otherwise without the express permission of the publishers.





## ASTON MARTIN DBS VOLANTE

Aston Martin DBS Volante:  
Fusing Open Top Motoring with the Ultimate Luxury Sports Car

Completing the DBS line-up, the new Volante affords customers the combination of the DBS's already-established benchmark sports car characteristics with all the thrills of open-air motoring.

Featuring a motorised retractable fabric roof, the DBS's beautiful profile is preserved whether up or down. When the roof is closed, it provides a warm comfortable ambience and when open, it neatly disappears behind the new tonneau cover at the touch of a button.





# Bho Boo Boutique Hoco



Nomination Designer Sunglasses Designer Watches Story Wheel Pandora Chamilla

If there's one thing Cheshire's not short of it's people chock full of entrepreneurial spirit and the hard- work ethic that leads to success. Two perfect examples of this are Chris and Honor Orme, owners of Boutique HoCo, a rapidly expanding chain of accessories stores, stocking everything the girl about town will need to complement any outfit from day-wear to glamour

It all started when Chris and his wife experienced an unexpected blow to their livelihood from the rapid spread of Foot and Mouth Disease that ruined many an agriculturally linked business. "We started over 20 years ago, running stalls on weekly markets." Chris explains. "We decided to start attending county shows and prestigious events all around the country. We were doing well and hadn't considered changing anything, when Foot and Mouth struck. Overnight our market was taken away from us as all the Shows and country events were cancelled. "We knew we needed to change the way we did business, and fast, so we begged, borrowed and stole until we could open an accessory stand in the mall at Golden Square Warrington. On a buying trip to New York we came across PANDORA jewellery and knew instantly that it was sure to be a huge hit in the UK. Our prediction was correct! It's proven so popular that we have opened a new store dedicated purely to PANDORA, which will complement our existing stores elsewhere." In addition to Boutique Hoco and PANDORA in Warrington, the couple have also opened stores in Stockport and in Beaumaris, Wales and before summer's end will have opened stores in Newcastle-under-Lyme and Stratford-upon-Avon. "Our objective when deciding what range of accessories to stock has always been to avoid items that are in fashion one day and gone the next." says Honor. "We choose brands and styles that we know people will enjoy for many seasons. I guess it's the 20-years of experience that I have, but I've developed a sense for what people will appreciate. We stock jewellery, watches, sunglasses, bags, pashminas, everything you need to finish any outfit. At the moment the Dior, Tom Ford and

Carrera sunglasses are just racing out of the shops, the designs are perfect for our customers and will last them for ages, as they're all about style, not 'fashion'. " Perhaps their most popular however has been PANDORA, a jewellery phenomenon that has rapidly gained a huge fan base. PANDORA is renowned for its irresistible charm bracelets and with hundreds of handcrafted charms from 14 carat gold and sterling silver, the collection allows women to create bracelets that are completely unique. The complete PANDORA collection includes rings, matching jewellery, earrings and the stunning 18 carat jewellery range called LovePods. Chris and Honor's passion and hard work have resulted in accolades from the business community as well as their customers. They have just won the Warrington Retailer of the Year Award, which Chris puts down to the team effort it takes to make Boutique Hoco the success it is. "It's all about the team and the support they give us. Everybody works very hard to ensure that we deliver both the products our customers want and the service they deserve. I'm very proud of all we've achieved."

Boutique Hoco  
8-10 Old Market Place  
Warrington WA11QB  
01925 639 354

Boutique Hoco  
12 Bridge Street, Stockport  
Cheshire SK1 1XR  
0161 669 1644  
www.boutiquehoco.co.uk

BOSS  
HUGO BOSS  
PANDORA

ALEXANDER  
MCQUEEN

CARRERA  
RACING SUNGLASSES SINCE 1966

BB  
BALENCIAGA  
PARIS

TechnoMarthe  
GENEVE

MaxMara

YVES SAINT LAURENT  
collection

NU POP  
movement

MARC JACOBS

Christian Dior  
GUCCI



TOY WATCH

GIORGIO ARMANI

EMPORIO ARMANI  
OCCHIALI

VALENTINO



## ASTON MARTIN DBS VOLANTE

Broadening the DBS's character, the DBS Volante appeals to drivers who wish to combine the excitement of driving a finely-tuned sports car with the invigorating feeling of being open to the elements. This juxtaposition of ultimate performance and openness stirs the senses on any drive whether an exhilarating jaunt on favoured roads or cruising on lengthy journeys. 'Volante', meaning: 'moving with light rapidity', perfectly defines the performance potential and the dynamic characteristics of the DBS Volante.

Aston Martin's Chief Executive Officer, Dr. Ulrich Bez said: "The DBS Volante delivers the utmost relaxed driving experience with the hood up or down. It combines engineering excellence with design perfection.

"The DBS Volante



offers a subtle mix of power and performance. Adding to this, the fine craftsmanship – it is an unparalleled ownership and driving experience."

Conceived as a Volante from the outset, Aston Martin engineers opted for a fabric hood to closely follow the silhouette of the DBS coupe and due to its lightweight properties, minimise overall weight gain. Fully

retractable in only 14 seconds and at up to speeds of 30 mph (48 kph), the roof will automatically stow under the newly sculpted tonneau, maintaining the DBS Volante's perfect form – hood up or down.

Power is provided by Aston Martin's hand-built all alloy 6.0-litre V12 engine producing 510 bhp (380 kW / 517 PS), and 570 Nm (420 lb ft) of torque with a top speed of 191 mph (307 km/h) and 0-62 mph (0-100 kph) time of 4.3 seconds.

'moving with light rapidity'





CANALI



## ASTON MARTIN DBS VOLANTE

The nature of the V12, and in particular the torque available at all engine speeds, serves to provide effortless driving in all situations.

Aston Martin's 16th convertible in 95 years, the DBS Volante draws on the marque's extensive experience in designing iconic 'Volantes' and is a 2+2 featuring two occasional rear seats, ideal for younger persons or extra luggage. In standard specification, the DBS has a rear-mounted six-speed manual gearbox, while an automatic six-speed 'Touchtronic' option is also available. As with the coupe, the Volante is offered with carbon ceramic brakes as standard providing exceptional stopping power. Benefitting from materials



derived from the motorsport and aerospace industries, the bonnet, front wings and boot lid are made from carbon fibre all helping to reduce weight.

The DBS Volante also comes with Bang & Olufsen's renowned 'BeoSound DBS' in-car entertainment system, featuring 13 speakers as standard equipment. The BeoSound DBS has been expertly tuned by Bang & Olufsen's Tonmeisters and Aston Martin's acoustic engineers specifically for the Volante resulting in a system that senses when the roof has been retracted and adjusts the sound stage to compensate for extra wind noise, providing an unrivalled automotive audio experience.







## MORE WINS FOR ASTON MARTIN

Aston Martin continues to enhance its reputation for performance, reliability and success within the Nürburgring VLN endurance championship, securing another two class wins in the weekend's Langstrecken Meisterschaft Nürburgring four hour race on the legendary Nordschleife circuit.

The company's Nürburgring Test Centre team entered a near-standard V12 Vantage for Test Centre Director Wolfgang Schuhbauer and Chief Engineer Chris Porritt; the experienced pair duly claimed 20th overall from a field of 153 starters and class victory in the SP8 category.

In the SP10 category for GT4 cars, customer team Mathol Racing followed up their class win in the recent

Nürburgring 24 hour race with another class victory and an impressive 23rd overall in their V8 Vantage GT4, while VLN regulars Gentle Swiss Racing came home 29th and 3rd in class.

Reflecting on his first race in the V12 Vantage, Wolfgang Schuhbauer commented: "Once again we have shown just how accomplished and durable our sports cars are. The Nordschleife is uncompromising in its ability to test a car to its limits, but time and time again the Aston Martins finish and often ahead of many purpose built endurance racers. The Test Centre team performed excellently and my congratulations go to Mathol and Gentle Swiss Racing."

# Oliver Steer

## *Interior Design*



"Oliver Steer specialises in the interior design, build, and renovation of spectacular private homes within the UK and abroad. By working closely with the finest materials and craftsmen, Oliver harmonises the highest standards with impeccable style, without compromising on quality or attention to detail. For each of his projects, Oliver provides a range of services that capture both architecture and interior design with clear objectives and seamless delivery."

### Oliver Steer Interior Design

Interior design, architecture, project management and build. Member of BIID and IIDA

### Cheshire

4 Crown Mews  
Nantwich CW5 5AU  
Phone. 01270 624 044

### Southport

264-266 Liverpool Road  
Birkdale PR8 4PE  
Phone. 01704 565 616

Open Monday-Saturday

[www.oliversteer.com](http://www.oliversteer.com)





# GET INVOLVED IN THE “SPORT OF KINGS” AT MANOR HOUSE STABLES

Ever wondered what it would be like to be on the hallowed turf of the winner’s enclosure at Chester Races having watched your pride and joy, your very own racehorse power home to win a race? Then we have the answer. Manor House Stables is the North West’s leading horseracing training establishment, based in Malpas, Cheshire. Originally starting off as a cattle farm, Manor House Stables’ investors have created a training yard with unrivalled facilities from which to train racehorses that perform at the very top end of the sport.



Julius Geezer winning the Manor House Stables Lily Agnes Stakes at Chester May Festival, May 2010”

Manor House Stables sent its first runner to the racecourse in March 2007, and since then the stables has grown to house 90 horses, along with top quality training gallops, owners’ suite, office and staff accommodation. The facilities will be extended even further with work on an equine-spa and veterinary centre to commence later on this year.

In June 2009, leading trainer Tom Dascombe moved to Manor House Stables from his previous training base in Berkshire. Tom has high hopes of developing the yard into one of the most successful in the UK.

“The thrill of owning racehorses is one of the most exciting things to become involved with and I take pride in that fact that the amazing facilities and the idyllic location make Manor House Stables the place where you should want to have your horse trained.

The last four years have taught me that no two owners look for the same thing from racehorse ownership. I get to know my owners, I find out what they want from racehorse ownership and then seek to meet their needs. So whatever it is



that you are looking for please contact me and I will be delighted to invite you here to take a look and discuss your requirements." Tom Dascombe

“Having horses in training with Tom Dascombe over the last three years has been an exhilarating adventure for me. So much so that I am now involved in the ownership of eleven horses. Tom is one of the most talented and promising young trainers in the country. These qualities, along with the outstanding facilities at Manor House Stables, lead me to believe that it will not be long before he reaches the top.” Laurence Bellman, owner.



Anyone interested in finding out more about the thrill of owning racehorses or having a look at the facilities at Manor House Stables, of which the whole team are immensely proud of, should contact us at:

Manor House Stables LLP, Hampton, Malpas, Cheshire, SY14 8AB  
[info@manorhousestables.com](mailto:info@manorhousestables.com)  
 Office: +44 (0)1948 820485  
 Fax: +44 (0)1948 820495  
[www.manorhousestables.com](http://www.manorhousestables.com)

**Stobart** Group





## NATURAL STONE EMPORIUM - SIMPLY STUNNING STONE

There is nothing quite like the timeless quality of natural stone. No one appreciates this better than Natural Stone Emporium. Whether it's used to create a classic or contemporary look, Natural Stone's products are quite simply, stunning.

Working with a fantastic range of stone, travertine, marble and limestone in a multitude of colours and finishes, Natural Stone Emporium creates stylish tiles and bathroom accessories that give the home a unique appeal.

The craftsmen at Natural Stone Emporium make no excuses for their passion for stone. They won't compromise when it comes to quality and they are constantly seeking new techniques to style beautiful stone for their customers.

Customers are often spoilt for choice at the Natural Stone Emporium, but a talented and friendly team of advisors is on hand to guide them either by phone or at the new showroom in Derbyshire.

Natural Stone Emporium's products are also available on line at [www.stone-emporium.co.uk](http://www.stone-emporium.co.uk).



Natural Stone Emporium Ltd | 27 Long Lane | Chapel-en-le-frith | High Peak | Derbyshire | SK23 0TF | Tel: 0845 491 8791



## STRATSTONE AFTERSALES

### Stratstone Service Centres

At Stratstone we have a nationwide coverage of service centres with manufacturer trained technicians ready to deal with any of your servicing needs. Whatever the make or model of your vehicle we are here to provide you with good value, personalised service.

We know that the most important thing to car users is reliability. Having your car serviced regularly helps to prevent more serious problems from occurring and gives you the peace of mind to carry on motoring. As well as maintaining a healthy fuel economy, regular servicing and checks to your vehicle will also help to maintain the resale value.



### Our service package includes:

While you wait service

Collection and delivery service

Courtesy car facility  
(subject to availability)

Fully trained manufacturer technicians and latest diagnostic equipment

Instant pricing facility for all servicing and repairs



Beckie-L



LUXURY FOR THE DISCERNING WOMAN IN YOUR LIFE.  
VISIT 'THE BOUTIQUE' AT [WWW.BECKIE-L.CO.UK](http://WWW.BECKIE-L.CO.UK)



## STRATSTONE AFTERSALES

### Parts

Our national coverage of dealerships representing most of the popular brands of car ensures that you're in good hands when it comes to parts.

Our dealers stock a wide range of parts and accessories for most models at very competitive prices. If your required part is not in stock, don't worry we'll order it for you.







CHESHIRE  
HELICOPTERS

when time matters

Business  
Group Travel  
Events  
Special Occasions  
Aerial Filming

time is a precious luxury

Fly Cheshire Helicopters to meet the most demanding of schedules. Pick-up direct from your door and arrive in London within the hour.

Lavishly appointed helicopters offer comfort and convenience for every type of travel experience. Whether it's for a special occasion, day out at the races or business meeting, Cheshire Helicopters can offer a bespoke service to fulfill any requirement.

HELICOPTERS

Twin Squirrel\*  
Agusta 109\*  
Single Squirrel

Call 0800 030 4105  
Email [ops@cheshirehelicopters.co.uk](mailto:ops@cheshirehelicopters.co.uk)

Get ahead with Cheshire Helicopters  
[www.cheshirehelicopters.co.uk](http://www.cheshirehelicopters.co.uk)



\*All weather plus day and night capabilities

GB AOC 2181



## STRATSTONE AFTERSALES

### Accident Repair Centres

Having an accident is often an upsetting and stressful event. Call a Stratstone Accident Repair Centre and we'll take control of the situation for you, deal with your insurance company, arrange your courtesy car and take care of all repairs.

### Sounds too good to be true?

It's not. We'll even submit your claim form and our engineer's report to your insurance company. As our Accident Repair Centres are approved by all leading insurance companies there is usually no delay in proceeding with repairs. Your car will be collected, repaired and returned to you gleaming and cleaned. In the mean time we will arrange your courtesy car.



Your car will be repaired in an extensively equipped bodyshop

Our experienced, fully trained technicians use the latest sophisticated facilities, including water based Paint Systems for a superb finish

Efficient, computerised estimating, including digital images which can be transferred immediately to your insurance company

Mobile estimating service free of charge

Free recovery



# MERE CORPORATE GOLF



WHETHER ENTERTAINING  
A KEY CLIENT OR TAKING  
YOUR COLLEAGUES  
TO MERE FOR AN  
UNFORGETTABLE  
GOLFING EXPERIENCE.

THE CHALLENGES  
WON'T JUST REMAIN  
IN THE BOARDROOM!



WHY NOT ASK ABOUT  
GOLF MEMBERSHIP?



Described as the 'Wentworth of the North', the  
course has many challenging holes, with the  
famous last four, being the most talked about.

In fact, the only thing that won't be a challenge  
is letting Mere organize your perfect day!

**With prices from just £85+VAT** per  
person, for a fully featured day we will take care  
of every detail from your initial enquiry until  
your last guest leaves after dinner!

**Please quote reference AM\_10**

Mere Golf & Country Club, Chester Road,  
Mere, Knutsford, Cheshire WA16 6LJ

**Tel. 01565 830155**

**www.meregolf.co.uk**

play@meregolf.co.uk

## When only the best will do...



For more  
information  
please call Dave Fitton  
or John Owens on  
**0161 834 8877** or visit  
[www.reichinsurance.co.uk](http://www.reichinsurance.co.uk)

### ...we've got a solution for you.

You are unique. An individual. When it comes to protecting your  
valuable vehicles, property and possessions, you may not be aware that  
standard insurance policies may not provide sufficient cover for your needs. At Zurich  
Private Clients in conjunction with our partner Reich Insurance Brokers we specialise in  
providing insurance for your vehicles, home, contents, valuable possessions, yacht and  
motorboat all under one comprehensive insurance package. To discuss your insurance  
requirements or to obtain a personal quotation please call your dedicated team at  
Reich Insurance Brokers on 0161 834 8877 or email [info@reichinsurance.co.uk](mailto:info@reichinsurance.co.uk)



Zurich Private Clients is a trading name of Zurich Insurance plc. A public limited company incorporated in Ireland Registration No. 13460 Registered Office: Zurich House, Ballsbridge Park, Dublin 4, Ireland. UK branch registered in England and Wales Registration No. BR7985. UK Branch Head Office: The Zurich Centre, 3000 Parkway, Whiteley, Fareham, Hampshire PO15 7JZ.

Authorised by the Irish Financial Regulator and subject to limited regulation by the Financial Services Authority. Details about the extent of our regulation by the Financial Services Authority are available from us on request. FSA Registration No. 203093. These details can be checked on the FSA's register by visiting their website [www.fsa.gov.uk/register](http://www.fsa.gov.uk/register) or by contacting them on 0845 606 1234.

ZPC228.01 (710468002) (08/10) RRD



### Competitiveness is not just reserved for the boardroom

Set in 150 acres of rolling Cheshire countryside, Mere Golf and Country Club is world renowned for its magnificent golf course and exceptional social, leisure and conference facilities.

The first class golf course was designed around a stunning lake, from which it got its name, and is the leading course in the north of England. Picturesque, well maintained and with silky smooth greens, Mere offers an unforgettable experience following in the footsteps of golfing greats.

As one of the UK's most challenging championship golf courses, Mere has introduced a bespoke corporate golf day package – the perfect way to do business by on and off the course.

Incorporating a welcome breakfast or lunch, followed by 18 holes, and with exceptional practice facilities and deluxe changing suites, a superb golfing day is guaranteed. Finish off with drinks in the renowned James Braid Suite and a sumptuous three course dinner.

Spend more time talking business and improving your swing, and book a bespoke corporate golf day package today. To book, call Mere Golf and Country Club on **01565 830155**.



**www.meregolf.co.uk**







# GRAF VON FABER-CASTELL

Founded in **1761**, the Faber-Castell brand name belongs to one of the oldest industrial companies in the world. In the hands of the same family for eight generations, Faber-Castell is now the world's leading manufacturer of wood-cased pencils and is represented in over 120 countries, with 15 production sites and 23 sales organizations around the globe. It sees itself as an international company with roots in Germany.



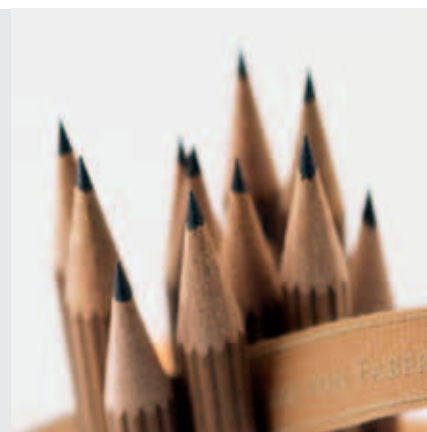
HISTORIC SILVER PENCIL EXTENDER



## THE PERFECT PENCIL

A PLATINUM-PLATED PENCIL EXTENDER WITH BUILT-IN SHARPENER. POCKET PENCIL MADE OF FINELY RIBBED CEDAR WOOD IN BLACK OR BROWN WITH A FINE WHITE ERASER UNDER THE END CAP.

INSPIRED BY SILVER PENCIL EXTENDERS OF THE FABER-CASTELL PORTFOLIO FROM THE MID-19<sup>TH</sup> CENTURY THAT TURNED A SIMPLE PENCIL INTO A PIECE OF PERSONAL JEWELLERY.



WRITES



PROTECTS



ERASES



SHARPENS

# 250 YEARS OF FABER-CASTELL

"DOING ORDINARY THINGS EXTRAORDINARILY WELL"



## Tradition and drive

It is now two and a half centuries since the cabinet-maker Kaspar Faber laid the foundations of the business in the village of Stein near Nuremberg: Faber-Castell will be celebrating its 250<sup>th</sup> anniversary in 2011. Whereas graphite pencils made up the bulk of pro-

duction in 1761, the present-day portfolio embraces a wide range of quality products for writing, drawing, and creative design. One factor remains decisive for Count Anton Wolfgang von Faber-Castell, chairman of the board of the Faber-Castell

group: "Our uniqueness – that's what will continue to make us successful in future. We are clearly differentiated from our competitors, and we offer clearly recognizable customer benefits for each target group. In short, we remain true to our basic principle of doing ordinary things extraordinarily well."

## The Graf von Faber-Castell Collection

Based on that past, Count Faber-Castell saw it as a personal challenge to rediscover selected products made by his ancestors and use modern technology to apply their timeless design to the present day. Those ideas took shape in the Graf von Faber-Castell Collection. The world of graphite writing stands at the centre of this exclusive assortment that includes not just choice writing implements made of superior kinds of wood but also quality desk accessories and leather goods. An unmistakable and individual core product of the Collection is The Perfect Pencil – an elegant pock-

et-length pencil with an eraser under the end cap and an extender that holds a sharpener at the ready.



## The Pen of the Year 2010

The culmination of the Graf von Faber-Castell Collection is the Pen of the Year edition. Each year since 2003, an exclusive fountain pen has been hand-made for a limited period of twelve months. The use of choice materials such as amber,

mammoth ivory, or woven horse-hair results in a captivating collector's item. For the Pen of the Year 2010, Faber-Castell has revived the ancient

art of the gunsmith. The Faber-Castell family have always had a pronounced environ-

mental awareness, coupled with a love of the woods and forests, and so the Pen of the Year was inspired by the beautiful craftsmanship of some unique old hunting rifles in the possession of the family. The valuable wood of the Caucasian walnut, in the past the prime choice for gun stocks, dominates the barrel of the pen with its rich dark colour and beautiful figuring. Just a few traditional craftsmen are still familiar with the secret art of case hardening, that lends the metal parts an inimitable shimmering marbled look: until the late 19<sup>th</sup> century that was the seal of quality for a good gun. Each Pen of the Year is individually numbered and has a 24-carat gold inlay. It comes in an exclusive case with a certificate attesting to the limited edition.







## ASTON MARTIN DBS

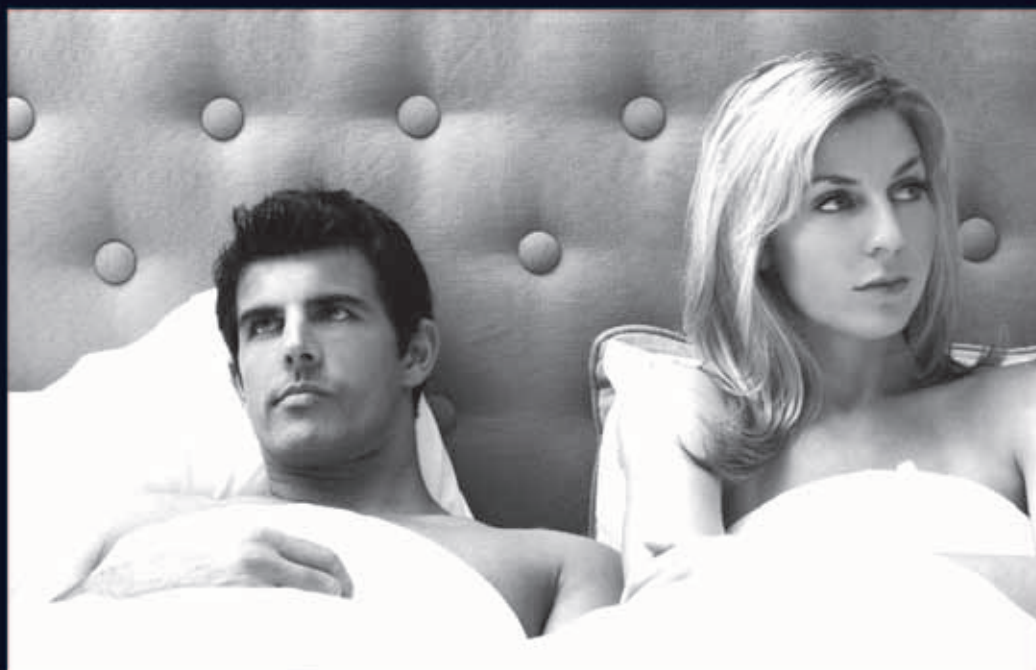
### Aston Martin Introduce Touchtronic Option to DBS

Introduced as an alternative to the standard six-speed manual gearbox, DBS customers will now be afforded the option of the 'Touchtronic 2' six-speed automatic transmission. Derived from the same ZF transaxle unit that was developed for the DB9, the system has been substantially re-engineered to accommodate the power and performance characteristics of the DBS.

The DBS Touchtronic transmission features a final drive ratio shortened from 3.15:1 to 3.46:1, aiding quicker acceleration times and an improved performance feel. Additionally, changes to the gearbox calibration aid more aggressive gear shifts and greater usability, while retaining the performance potential of the manual gear box – matching the 0-60mph (0-100km/h) time of 4.3



# LOVE WILL TEAR US APART



**We're music to your ears in all divorce matters.** Life seemed all so simple and carefree then. But times move on and people move with them. When a relationship breaks up, you'll need support and advice to guide you through the legal complexities. That's where Pannone can help. As the single largest team of family lawyers in the North West, we've got the experience and expertise to handle even the most complex of situations. We're at your side to ensure you reach a favourable resolution to all your childcare, financial and property disputes.

**So if your life's hit a low note, call us on 0161 909 4549 or email [cej@pannone.co.uk](mailto:cej@pannone.co.uk)**

DIVORCE AND FINANCE  
CHILDREN MATTERS  
CHILD ABDUCTION  
COHABITATION  
PRENUPTIAL AGREEMENTS  
CIVIL PARTNERSHIPS  
CSA/MAINTENANCE  
INHERITANCE ACT

Pannone has been ranked as the Number One firm for Divorce & Family Law in the North West for the last 12 years by leading legal directories, The Legal 500 and the Chambers UK Guide. Regulated by the Solicitors Regulation Authority. Authorised and regulated by the Financial Services Authority.

123 Deansgate, Manchester M3 2BU / Ollerbarrow House, 209/211 Ashley Road, Hale WA15 9SQ / 69 London Road, Alderley Edge, Cheshire SK9 7DY



**PANNONE**  
THE COMPLETE LAW FIRM

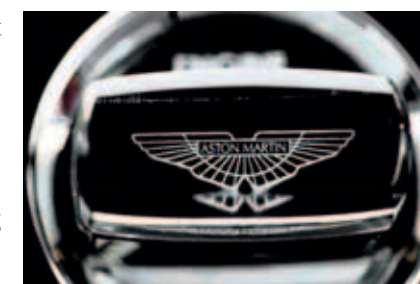


## ASTON MARTIN DBS

System functionality is consistent with that on the DB9, with 'Park', 'Reverse', 'Neutral' and 'Drive' modes selected via facia mounted controls.

When in 'Drive' mode, pulling either of the leather-trimmed magnesium alloy paddles mounted on the steering column will activate Touchtronic mode, enabling the driver to control gear shifts via the paddles. Touchtronic mode is also accessible directly on engine start-up. Alternatively, the 'Drive' mode can be selected at any time by pressing the 'D' control on the centre console, engaging a fully automatic mode which will select the most appropriate gear for the speed and driving conditions automatically.

The system also includes a 'Sport' mode - activated by a button on the centre console - which engages a more aggressive gear shift strategy as gear changes feel sharper and more forceful, engine speed matching on downshifts is more aggressive and in full automatic mode, upshifts occur at higher speeds. The Sport setting also incorporates a more responsive throttle



map to match the high-performance characteristics of the DBS.

### Bang & Olufsen Audio

The DBS will now also benefit from the installation of a new Bang & Olufsen BeoSound system - developed specifically for the DBS - as standard equipment. The BeoSound DBS system produces a total power output of 1000w, delivering the sound image through a total of 13 channels across 10 speaker locations. Adopting new speaker grille designs throughout the car and acoustic lenses which rise out of the facia, the system offers customers an unrivalled audio experience.

### Enhanced Option Range

After evaluating customer feedback the DBS will now also be offered with an optional 2+2 seating configuration, where the rear storage areas are replaced with two seats. A 2+0 arrangement - where two storage areas populate the rear environment - remains standard.

Also introduced to the DBS is the option of a new ten-spoke 20" forged aluminium wheel with

"aggressive gear shift strategy"



Stay at every rock star's favourite hotel  
(sting not included)



**Chateau Marmont**  
Hollywood, LA

from  
**£999\***<sub>pp</sub>

**Sandy Lane**  
St James,  
Barbados

from  
**£2,399\***<sub>pp</sub>

**Ulusaba Safari Lodge**  
Sabi Sands,  
South Africa

from  
**£2,599\***<sub>pp</sub>

Virgin Holidays and Hip Hotels combine to bring you luxury breaks in the most stunning of settings. Rest assured, our locations are as unique as they are exclusive. Our hotels are so stunning, they're destinations in their own right. What's more, we've built our reputation on going the extra mile to bring our clients the extraordinary. So whether you're looking for an idyllic island escape or a chic city break, one of our dedicated travel gurus will ensure it's nothing less than perfect.

**Virgin** **HOLIDAYS + HIP HOTELS**  
The world as you want it.

For the lowdown on the high life, call 0844 573 2465 or visit [vhiphotels.co.uk](http://vhiphotels.co.uk)

All from prices are based on 2 adults sharing for selected departure dates and are subject to availability. Chateau Marmont based on 3 nights, standard room, room only, Virgin Atlantic economy flights, private transfers. Sandy Lane based on the 2011 Golf & Spa Package, 7 nights, Orchid Room, with breakfast, Virgin Atlantic economy flights, private transfers 4 rounds of golf at the Country Club and one full body massage per person. Ulusaba based on 3 nights, Safari Room, all inclusive, Virgin Atlantic economy flights, internal flights. All bookings are subject to availability and standard terms and conditions apply. Prices correct as of Jul '10.

**ABTA**  
ABTA No. V2043



## ASTON MARTIN DBS

diamond-turned surface – available in either silver or graphite finishes. The optional wheel delivers a total unsprung mass reduction of 8kg versus the standard cast wheel, aiding enhanced handling and improved acceleration and braking performance.



manufacturing processes, race-derived materials and components and Aston Martin's unrivalled hand-build expertise makes the DBS a luxury sports car without equal. Every line, crease and curve conveys the enormous potential of the DBS, a seductive blend of refinement and raw power, provided by the hand-built V12 producing 380 kW (510 bhp/517 PS) and a top speed of 191mph (307km/h).

The Aston Martin DBS is a 6.0-litre V12 powered, race-bred, two-seater shaped by the aerodynamic demands of high performance, with an exquisite interior that marries beautifully hand-finished materials with the very latest in performance technology.

Aston Martin Chief Executive Officer, Dr Ulrich Bez said: "The DBS is the ultimate expression of Aston Martin's engineering and technical ability. It offers pure performance without compromise."

A combination of elegant design, innovative





# HETHERINGTON NEWMAN

BESPOKE FURNITURE AND ARCHITECTURAL JOINERY



32 PRINCESS STREET KNUTSFORD 01565 651595 [www.handesign.co.uk](http://www.handesign.co.uk)

## STRATSTONE FINANCE

We offer a range of Personal Finance options available to help you decide on the best way to purchase your car. For a quotation, information, help, or advice on which option would suit your needs, give us a call and ask to speak to a Finance and Insurance Specialist.

### Hire Purchase

An easy and highly flexible method of purchase, ideal for customers who prefer to have 'ownership' of their car. Hire Purchase is very popular because it offers a wide range of deposit and repayment periods up to 60 months, thereby allowing customers to have a fixed monthly payment which best suits their budget.

### Personal Contract Purchase (PCP)

Ideal for those customers changing or upgrading their car typically at intervals of between 24 months and 36 months. PCP makes it easier for the customer to afford those cars that would normally be considered 'out of budget'. At the end of the contract there are 3 choices, outright ownership, part exchange for a new car, or hand back the car and walk away with nothing further to pay.

### Business User Finance

#### Hire Purchase

An easy and highly flexible method of purchase, ideal for customers who prefer to have 'ownership' of their car. Hire Purchase is very popular because it offers a wide range of deposit and repayment periods up to 60 months, thereby allowing customers to have a fixed monthly payment which best suits their budget.

### Finance Lease

Another 'business user' facility, monthly rentals attract VAT. Attractive to businesses that can take advantage of accelerated tax benefits and a proportion of VAT can normally be reclaimed.

Variable Rate & Balanced Payment Plan  
Applicable to 'business users' and finance balances over £15000. Offers ownership with flexible deposit and repayment periods allied to interest rates linked to Finance House Base Rate.







## ASTON MARTIN DB9

### The Definitive Sports Grand Tourer

The Aston Martin DB9 is a thoroughbred sports car with GT levels of comfort and refinement. Combining Aston Martin's unique character with an uncompromising design philosophy, the DB9 was borne out of a synthesis of traditional craftsmanship, high-tech manufacturing, modern components and use of the finest materials.

The DB9 is both a full-blooded sports car and a hugely capable grand tourer. Whether in Coupe or Volante form, it offers a supreme combination of driver involvement, character, luxury and refinement. Aston Martin introduced a revised version of the company's critically acclaimed DB9 which includes significant enhancements to standard specification.





**manometro.**   
GIULIANO MAZZUOLI

[www.giulianomazzuoli.com](http://www.giulianomazzuoli.com)



## ASTON MARTIN DB9

These changes include a revised version of Aston Martin's 6.0 litre V12 engine to deliver improved power and torque. Peak power of 470bhp (350kW) – increased by 20bhp (30Nm) – is now reached at 6,000rpm, resulting in a power to weight ratio of 267bhp per tonne (199kW/tonne) – an increase of 11bhp per tonne over the existing DB9.

Peak torque of 600Nm is delivered at 5,000rpm, aiding improved low engine speed and providing more accessible power for the driver, as well as a greater performance feel overall. Accordingly, top speed is now 190mph (306km/h) and the benchmark 0-60mph time improves by 0.3 seconds for the Touchtronic transmission – which benefits from a new valve box and integrated transmission controls to achieve quicker gear shifts – to 4.6 seconds and by 0.1 seconds to 4.6 seconds



for the manual gearbox.

The latest DB9 also incorporates a series of chassis developments for both the Coupe and Volante derivatives. Bilstein dampers are introduced in addition to revised upper suspension arms and retuned suspension bushes to deliver improved ride quality; aiding greater refinement in the Volante

and an enhanced sporting feel in the Coupe. The DB9 Volante also benefits from revisions to the front shear panel which increases torsional rigidity by 10%, further improving refinement.

The DB9 manages to combine all facets of style, quality and usability of a traditional Aston Martin without relying on retrospective detail or design. Accordingly, styling changes to the revised DB9 are subtle, reflecting the car's timeless design and understated elegance.

“timeless design and understated elegance”





Powered by  
**VOLVO  
PENTA**



Our meticulously crafted Sports Cruisers and Motor Yachts range from 38 to 78 feet.  
To discover the full Fairline story - and to view our new and pre-owned models - visit our website.



**Fairline Wales**  
Power Boat Centre, Hafan Pwllheli,  
Pwllheli, Gwynedd, LL53 5YT  
Tel: 01758 614 600 Fax: 01758 614 700

[www.fairline.com/wales](http://www.fairline.com/wales)



## ASTON MARTIN DB9

Exterior styling changes include the introduction of a new standard 19" 10-spoke alloy wheel, new door mirrors and a revised anodised aluminium five-bar grille. In the cabin changes include a new centre console constructed from die cast zinc with a painted iridium silver finish and the introduction of a new Emotion Control Unit (ECU) – first seen on the DBS in 2007. The ECU – constructed from glass, polished stainless steel and polycarbonate - replaces the key used previously for the DB9.



The innovative DB9 introduced an exciting new era for Aston Martin. The 2+2 sports car set new standards in its class due to its astonishing combination of technology, agility and design. The car marked the beginning of a new era for Aston Martin and became the first car to be hand-made at the company's state-of-the-art facility in Gaydon, Warwickshire.





## Luxury tailor made travel

64 - 66 KING STREET, MANCHESTER M2 4ND  
0161 817 6550

NO-ONE KNOWS  
THE PLANET LIKE US.

**KUONI**  
EST. 1906

VOTED THE WORLD'S LEADING TOUR OPERATOR FOR 11 YEARS IN A ROW.

## STRATSTONE CORPORATE SALES

Our business has evolved to meet the needs of our customers, to include a single point of contact for car, motorcycle, van or truck sourcing. Our operating procedures continue to evolve with speedy product information and pricing know how at the cornerstone of our offering.

### One Stop Shop

We can offer a One-Stop-Shop through our central team or, should you prefer a single franchise 'hub' offering a single point of contact to access all of our group dealers within that franchise.

Both offer a maximum one hour response time for availability and demonstrator requests, ordering via electronic procurement system, email, fax or post.

### Aftersales Service

With well over 200 dealerships from Exeter to Dundee and in all major metropolitan areas we are able to offer a nationwide dealer network for you aftersales requirements. Our team will be delighted to work with you in delivering the best solution in servicing and accident repair for your business.

### Vehicle Funding Options

We are in a position to offer advice and assistance in choosing the best route for your business in vehicle finance.

Whether you consider Outright Purchase, Hire Purchase Leasing or Contract Hire our team will be pleased to advise you as to the most beneficial arrangement in terms of capital, cash-flow, tax efficiency and risk.





# insight knowledge commitment bright ideas

At Mills & Reeve, we recognise that every client is different. With a thorough understanding of your objectives and ambitions, we can ensure that our advice is truly supportive of your needs, whatever they may be.

We will provide a first rate service from a legal team that is committed to helping you achieve your goals.



MILLS & REEVE

## Are you doing all you can to protect your wealth?

Your wealth is under attack as a large number of today's marriages break down and tax rates keep rising, so protecting your assets and your children's inheritances is essential planning.

There are some things that everyone should do and probably top of that list is making sure you have a well-drafted will. Wills should be flexible to enable your executors to adapt to changing circumstances, make the most of potential tax saving opportunities and crucially protect wealth for your family.

You should also consider the use of trusts which, despite government attack, remain the vehicle of choice to protect family wealth. For example, if you decide to help your children to get on the property ladder consider making a gift to a trust which can then lend the funds to your children. This approach saves inheritance tax and protects the family funds should a child suffer a divorce. There are also alternative structures that can be used to protect wealth such as family investment companies. Such vehicles enable you to pass on wealth whilst retaining control over the funds and provide protection for the family wealth. They can also be very tax efficient vehicles for accumulating wealth.

Families worried about the wide discretion of the family courts to redistribute assets in the event of divorce should also consider pre and post-marital agreements. Pre-marital agreements (otherwise known as pre-nuptial agreements) are not technically binding, but are increasingly likely to be upheld. At the time of writing a decision from the Supreme Court is expected that may

have a significant impact on this area. Post-marital agreements can already be binding subject to the court's powers to vary them in light of changes in circumstances or to make provision for any children.

Pre and post-civil partnership agreements are the same agreements in relation to same sex couples as pre and post-marital agreements.

If couples are not married but do live together then cohabitation agreements are recommended to help make the breakdown of the relationship easier to sort out. The issues in this area can be particularly tricky and as a result expensive to resolve.

No one is immune to the effects of a relationship breakdown but by careful planning the financial impact and often some of the emotional impact can be reduced.

At Mills & Reeve, we have a national team that brings a wealth of experience in both private tax and family law to bear in this increasingly critical area of wealth protection. We are best placed to advise you and your family on how multi-generational wealth can be protected. We recognise that every client is different. With a thorough understanding of your objectives and ambitions, we can ensure that our advice is truly supportive of your needs, whatever they may be.



For more detailed information please see our websites at [www.divorce.co.uk](http://www.divorce.co.uk) and [www.mills-reeve.com](http://www.mills-reeve.com).

For all your legal needs, contact Alison Bull and Deborah Clark on 0161 235 5432 or by email, [alison.bull@mills-reeve.com](mailto:alison.bull@mills-reeve.com) or [deborah.clark@mills-reeve.com](mailto:deborah.clark@mills-reeve.com)

infectious  
ambition









## AT THE CUTTING EDGE OF INTERNATIONAL BATHROOM DESIGN

Let us shape your dreams. Fabulous new working displays.  
Including the spectacular Big Rain ceiling-mounted shower from Dornbracht.  
Wet areas a speciality. Limestone, slate, marble and porcelain tiles. Superb taps and accessories.



**BATH ROOMS**  
BY DESIGN

429 Chester Road, Woodford, Stockport, Cheshire SK7 1QP  
Tel: 0161 439 2100 Fax: 0161 439 5769  
www.bathroomsbd.co.uk sales@bathroomsbd.co.uk

## A CAUSE CLOSE TO OUR HEARTS

The HR Operations team at our head office put on their running shoes to run in remembrance of their colleague and friend Diane Arthur, who sadly lost her battle with pancreatic cancer.

The Race For Life was run by Hayley Hewitt, Stacey Shaw, Hilary Lambert, Rhonda Morrison, Katie Heaps, Dot Stevenson, Tracy Wareham, Sonya Durose, Maxine Lambert and other family/friends on the 25th July at Holme Pierrepont. The ladies ran for Cancer Charity, Cancer Research UK.

All money raised went to Cancer Research UK.



## Charity Dress Down Day

A Charity Football Dress Down Day was held to raise money for our chosen charity Sparks all together the team raised £300 through donations from team members. Sparks' mission is to help all babies be born healthy and stay healthy, they do this by funding high quality medical research into childhood diseases. We would like to thank everyone who has been involved in fundraising; every penny really does make a difference.







Aston Martin is synonymous with power, beauty and soul - qualities well matched to those of Holbeck Ghyll Country House Hotel, Restaurant and Health Spa.

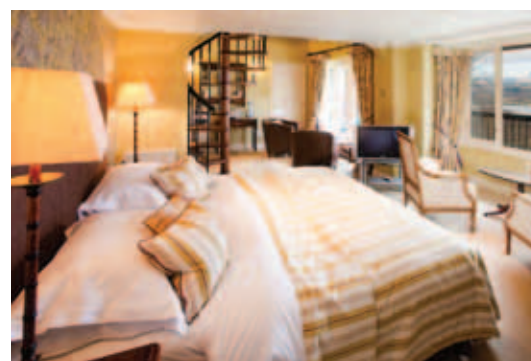
Holbeck Ghyll offers a world where elegant and generous hospitality meets sophistication and style- creating a welcoming haven whose reputation and awards are richly deserved.

Situated high on a hill, overlooking Lake Windermere and the Langdale Pikes, Holbeck Ghyll boasts a view so intoxicating it has been voted one of the top 15 in the world. Nestled amidst acres of natural beauty and consistently listed amongst the UK's finest country house retreats, it truly is an oasis of calm far removed from the stresses and strains of everyday life.

Begin the day in one of the luxurious rooms before making your way downstairs to choose from a selection of perfectly prepared breakfasts. Mull over your plans for the day from the wide variety of choice made available to you.

Your every need and want is attended to at Holbeck Ghyll with staff aiming to exceed your expectations. This dedication to service is demonstrated in their attention to every detail and the endless possibilities of their concierge service, arranging anything from a bouquet of flowers to helicopter transfers – your imagination is your limit.

You may choose to spend your day in the hotel grounds enjoying the surroundings, relaxing in the sauna and possibly treat yourself to one or more of the many treatments at the Health Spa. The qualified therapists use the ESPA range which is produced from the highest quality organically or wild grown plants, known for their purity, potency and therapeutic qualities. Sheer indulgence and exquisite pampering will leave you totally revived and refreshed.



If you wish you can explore every nook and cranny of the storybook world of the Lake District; follow romantic cobblestone framed roads to various picturesque communities that evoke a timeless calm. Experience this enchanting world in the comfort of your own transport, maps and a picnic hamper can be provided, or let the concierge arrange the hire of a Super Car or employ the services of a qualified Lake District guide.

For those who enjoy the outdoors a hot air balloon ride can be arranged or simply take a hike over fells, straight from the hotel grounds, and take in the spectacular lake views.

Return from your day and be seduced by the warmth and tradition of Holbeck Ghyll. Step into the oak panelled entrance hall with its inglenook fireplace, where a crackling log fire burns most of the year and sink into deep luxurious armchairs while indulging in some homemade pastries and a cup of tea laced with fresh milk.

Retreat to your luxurious room, all of which are ensuite and contain every modern amenity - most enjoying the breathtaking lake and mountain views. Each one is individually designed and furnished with exquisite taste, including beds dressed in Egyptian cotton to ensure your stay is as comfortable and warm as your welcome.

Prepare for the evenings service in your smart yet casual attire. Return downstairs and unwind in the elegant, relaxing lounges and browse the evening's menu as you enjoy your aperitif and canapés - before being seated in their Michelin star restaurant.

Michelin star restaurants have worldwide fame for offering the crème de la crème of dining experiences and Holbeck Ghyll will not disappoint, having achieved this accolade for its 10th successive year. Specializing in traditional British cuisine with a French influence, Holbeck Ghyll is ranked the North West's 2nd best restaurant in the 2010 Good Food Guide and boasts an award winning wine list with over 275 superior wines. With an emphasis on sourcing quality ingredients and superb service, dining is an integral part of any stay and one of the many reasons guests return time after time.

Quote 'Aston Martin' when making a half board reservation at Holbeck Ghyll and receive:

- **Light afternoon tea on arrival**
- **7 course Gourmet Tasting Menu in their Michelin star restaurant**
- **Luxurious ensuite accommodation**
- **Full English breakfast**
- **15% off spa treatments**
- **From just £139pppn**



Reservations: +44 (0)1539 432 375  
Email: [stay@holbeckghyll.com](mailto:stay@holbeckghyll.com)  
[www.holbeckghyll.com](http://www.holbeckghyll.com)

Holbeck Ghyll Country House Hotel, Holbeck Lane, Windermere, Cumbria, LA23 1LU

The offer is in conjunction with a half board reservation, rate quoted is based on two people sharing and is subject to availability.





## ASTON MARTIN V12 VANTAGE

Aston Martin's most exhilarating sports car

Based on the hugely successful V8 Vantage, the V12 Vantage features a 6.0-litre V12 engine producing 510 bhp (380 kW / 517 PS), and 570 Nm (420 lb ft) of torque with a top speed of 190 mph (305 km/h) and 0-62 mph (0-100 km/h) time of 4.2 seconds.

The latest incarnation of the Vantage family has been designed to provide a unique character, appealing to different driver tastes and complementing the other models in the current Aston Martin line-up.





## NEAL JONES FURNITURE HAS BUILT A REPUTATION FOR CREATING HIGH QUALITY FURNITURE THAT IS AS UNIQUE AS YOU ARE.

Beautifully handcrafted by British cabinet makers, our designs reflect your lifestyle, your personality and your ambition.

We provide a highly personalised design service and have the expertise and skill to create both contemporary and classic pieces such as dining tables, console tables and sideboards through to breathtaking, fully bespoke fitted libraries, bedrooms and kitchens.

*Neal Jones Furniture... the home of bespoke, beautifully crafted, classic and contemporary furniture.*

Neal Jones Furniture Ltd | 01200 429 669 | [www.nealjonesfurniture.com](http://www.nealjonesfurniture.com) | [neal@nealjonesfurniture.com](mailto:neal@nealjonesfurniture.com)



## ASTON MARTIN V12 VANTAGE

The original V12 Vantage concept was unveiled to guests at the opening of the Aston Martin Design Studio in December 2007. Continuing the marque's impressive record of bringing concepts through to production, Aston Martin engineers have brought the V12 Vantage to market in an incredible 12 months.



"The V12 Vantage has a unique character, one unlike our other cars. This will appeal to different people with different tastes, allowing more people to enjoy the Aston Martin experience."

"This also illustrates one of Aston Martin's key strengths – the ability to act quickly and turn concepts and ideas into reality."

Aston Martin Chief Executive Officer, Dr Ulrich Bez said: "This is the ultimate performance interpretation of the Vantage range, combining our most agile model with our most powerful engine. It represents the definitive driving package; providing spectacular performance to ensure a dynamically thrilling and everyday useable driving experience."

Designed for the focused driver, every component of the V12 Vantage has been honed with pure driving enjoyment in mind. Benefitting from race-developed materials and components, and featuring lightweight carbon fibre; performance and agility have been tuned to perfection.

"the ultimate performance interpretation of the Vantage range"



# THE MOST TALKED ABOUT RESTAURANT & BAR IN THE HEART OF LIVERPOOL'S BUSINESS DISTRICT

An original and unique space fusing the discretion of a 1920's speakeasy with the style of a downtown Manhattan restaurant. The Noble House is a celebration of good food and drinks in an exciting environment with great service!

For a great start to the day, the amazing vitality drinks will complement the breakfast menu and New York inspired deli style sandwiches are just part of the lunch offering.

The drama of the menu with dishes including Harmony Farm Steak, Lamb Tagine, Meat and Fish Skewers and Sharing Platters, means there is something for everyone.

If you just want a quick drink at the bar, why not sample one of the fabulous cocktails including Shango Mojitos, Ginger Swizzles or the best Martinis in the city.

Downstairs (apparently) there is a "secret bar", a "hideout", dominated by a stunning underground arch, it is a haven for those who like to party until the early hours. Prohibition never felt so good! But will you be one of the select few invited down?

**"HAS TO WIN THE MOST PROMISING  
BAR & RESTAURANT AWARD OF 2010!"**

*Liverpool Echo*



THE NOBLE HOUSE  
RESTAURANT & BAR

Heywood Building,  
5 Brunswick Street,  
Liverpool L2 0UU  
TEL 0151 236 5346  
[www.thenoblehouse.co.uk](http://www.thenoblehouse.co.uk)



## ASTON MARTIN V12 VANTAGE

Visually enticing, the V12 Vantage expresses its performance potential through its purposeful stance created by enhanced aerodynamic and cooling aids optically widening the car, while retaining traditional understated Aston Martin design. Equally inviting, the cosseting interior permits the driver to extract maximum performance ability from the car while also enjoying customary levels of Aston Martin comfort on longer journeys. High levels of power and torque are available at all engine speeds making the V12 Vantage responsive



and tractable in any driving situation.

The V12 Vantage is built at Aston Martin's global headquarters in Gaydon, Warwickshire joining the DBS, DB9 and V8 Vantage model lines which are built in the state-of-the-art production facility combining hi-tech manufacturing processes with traditional hand-craftsmanship. Production is limited

up to 1,000 examples over the life span of the car, making the V12 Vantage a truly exclusive driver's car.







# — E — EDGEMERE

Prestigious property developers with impeccable quality and attention to detail.  
Delivering classical and contemporary commissions, tailored to suit our clients lifestyles.

PRIVATE COMMISSIONS | JOINT VENTURES | DEVELOPMENTS



Telephone: 0845 675 1111  
Email: [enquiries@edgemereestates.co.uk](mailto:enquiries@edgemereestates.co.uk)  
[www.edgemereestates.co.uk](http://www.edgemereestates.co.uk)



ASTON MARTIN V12 VANTAGE







## STRATSTONE EXPERIENCES

### Welcome to the Stratstone Experiences

Stratstone are delighted to offer a unique blend of exclusive events to our customers.

This exclusive club offers Stratstone customers new and unique experiences. Customers are able to meet fellow Club members of similar interests at our Stratstone style experiences.

Our customers give us excellent feedback on the events we run and consistently return to our events year after year. But don't take our word for it, read what our customers say.

"I just wanted to thank you for great weekend at Le Mans. The organisation and hospitality from you and your team was second to none. I was lucky to be invited along as a guest and enjoyed every minute."

*A delighted 2010 Le Mans Guest*



"We are now fully recovered from the weekend and would like to thank you (and the rest of the Stratstone team) for helping to make it such a memorable experience. Shirley and I were particularly impressed with the way things had been organised and the helpful attitude of the whole team. I'm pleased to say that there were no exceptions, from the cleanliness of the facilities to the standard of the catering and the catering staff and the smooth-running shuttle service."

*A happy 2010 Le Mans Guest*



## "For Special Occasions"

The Haweswater, one of the Lake Districts finest countryside hotels, set amongst 26,000 acres of unspoiled natural beauty on the shore of the beautiful Haweswater Reservoir.

The main entrance opens from a terrace overlooking what can be described as the most dramatic scenery in the secluded Valley of the Golden Eagles.

### The Haweswater HOTEL • RESTAURANT • BAR

Haweswater Hotel  
Lakeside Road  
Bampton, Penrith  
Cumbria  
CA10 2RP

**Tel: 01931 713 235**  
**Fax: 01931 713 145**

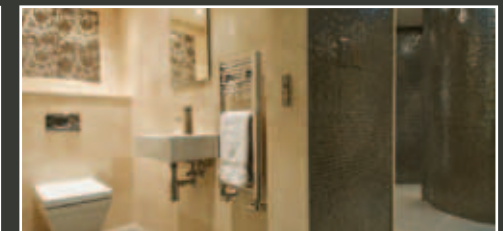
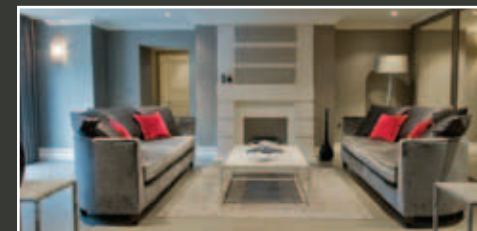
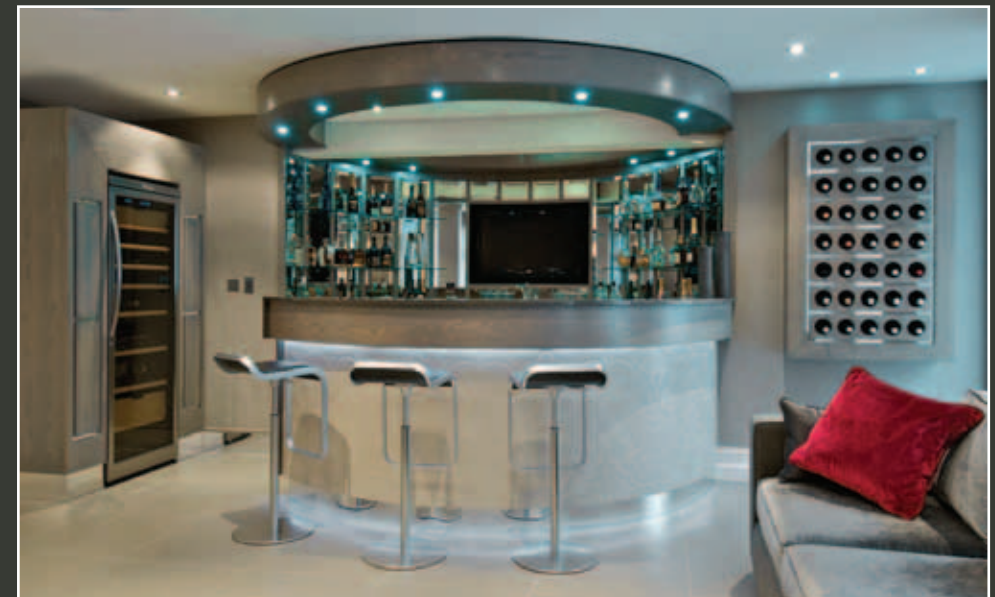
[info@haweswaterhotel.com](mailto:info@haweswaterhotel.com)  
[www.haweswaterhotel.com](http://www.haweswaterhotel.com)







## Bespoke Interior Design



Residential leisure complex

## UK DESIGN EMPORIUM

UK Design Emporium delivers the ultimate in interior design, architecture, build & project management and bespoke interiors. Everything is considered and planned down to the last detail to give you impeccable quality, coupled with an innovative approach to design and specially tailored to meet your requirements. For your own timeless classic home contact us today to arrange a personal appointment.



Tel: 01625 548771 Fax: 01625 535656  
Email: [enquiries@ukdesignemporium.co.uk](mailto:enquiries@ukdesignemporium.co.uk)  
88 Water Lane, Wilmslow, Cheshire SK9 5BB

INTERIOR DESIGN

ARCHITECTURE

BUILD & PROJECT MANAGEMENT

BESPOKE INTERIORS

[WWW.UKDESIGNEMPORIUM.CO.UK](http://WWW.UKDESIGNEMPORIUM.CO.UK)





## ASTON MARTIN V8 VANTAGE

### New Performance Options Available for 4.3 litre V8 Vantage

Following the launch of the new Aston Martin 4.7 V8 Vantage, owners of the original 4.3 litre V8 Vantage are now afforded the choice of a retrospective-fit power enhancement and the hugely popular Sports Pack option.

Available immediately through the dealer network, customers will be able to upgrade their existing 4.3 litre V8 engine to an even more potent version of Aston Martin's already impressive power unit.



# 15 years

## Designers of Distinction



## The Edge Interiors

### Inspiration

Design

Service

Solution



The Edge Interiors welcomes you to our impressive Alderley Edge showroom to experience the latest in interior decoration.

Established in 1994 we have achieved our outstanding reputation for exceptional design and customer service by listening to what our clients want and then translating it into ideas and advice using our vast range of collections.

The Edge Interiors, 3A London Road, Alderley Edge, Cheshire, SK9 7JT  
T: 01625 584999 E-mail: [designers@theedgeinteriors.co.uk](mailto:designers@theedgeinteriors.co.uk) [www.theedgeinteriors.co.uk](http://www.theedgeinteriors.co.uk)



## ASTON MARTIN V8 VANTAGE

With the addition of the power upgrade, peak power is raised by 20bhp to 400bhp and torque is increased by 10Nm to 420Nm, increasing top speed to 177mph and delivering a slight improvement in the 0-60mph time.

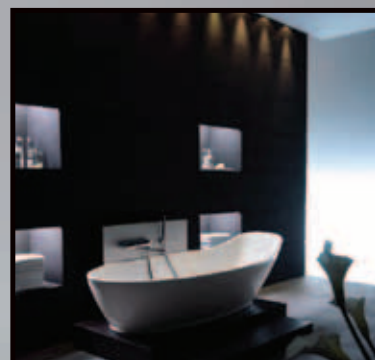
Developed by the Aston Martin engineering team, the power upgrade is realised through a revised induction system using technology previously introduced on the DBS. The induction system has a pair of switching airbox-valves that open at 5,500rpm allowing additional air into the engine producing more power in a controlled manner. The



engine's control unit has also been re-programmed with new software to optimise ignition timing. In addition the new calibration allows the engine to recognise higher octane fuels, further maximising performance.

Owing to the overwhelmingly positive response of customers towards the new Sports Pack option introduced on the new V8 Vantage earlier this year – now fitted to half of all V8 Vantages produced – 4.3 litre V8 Vantage customers can now alter the handling characteristics of their car, with the same package of dynamic enhancements.





From experience comes excellence



As a company we specialise in the design and installation of beautiful kitchens and bathrooms. From the smallest en-suite to the grandest kitchen each project is as individual as our clients and we believe that function and beauty need not be separate ideals.

**ALNO**

Please visit [www.christianoscheshire.co.uk](http://www.christianoscheshire.co.uk) for further completed projects.



## ASTON MARTIN V8 VANTAGE

Developed with the enthusiast in mind, the Sports Pack comprises uprated springs and Bilstein dampers contributing to a superior dynamic response. Lightweight forged aluminium 5-spoke wheels help to reduce the unsprung mass further augmenting the precision handling of the V8 Vantage.

Both options are available through Aston Martin's global dealer network; customers should contact their local dealership for pricing and availability.



The V8 Vantage is manufactured at Aston Martin's Headquarters at Gaydon, Warwickshire, UK, a facility that combines Aston Martin's renowned hand-built bespoke attributes with the technology required to manufacture the bonded aluminium VH architecture. Exquisitely designed and detailed with class-leading agility and performance, Vantage is a practical two-seater with a large tailgate providing access to a 300 litre rear luggage compartment.





# eden park

alderley edge



Edenhouse Estates in association with Uber Interiors are proud to present Eden Park, Oatlands - Macclesfield Road, Alderley Edge.

Set in its own secluded and private grounds, this truly breathtaking project is just two minutes walk from the village centre and enjoys an extremely high specification including the latest audio and visual integrated systems, internal swimming pools and much, much more.

Eden Park also presents the opportunity to clients to be involved in the interior design at this stage.

Each residence at Eden Park will enjoy the benefit of a full time Concierge based in the lodge house at the entrance. This facility also provides full-time security at night.

Current availability : Plot 1 **(Sold)** - 8,477 square feet  
Plot 2 - 7,503 square feet  
Plot 3 - 8,712 square feet  
Plot 4 - 12,175 square feet

Prices from £4,450,000 to £7,000,000

For further information please telephone the estate office on 0161 241 3344

edenhouse estates



# Electrikery

the only limit is your imagination!

audio visual • home cinema • control & integration • telecoms & data • lighting systems • security & cctv • design



Designed and conceived to enhance the living and working environments of the most discerning customers and exclusive properties, Electrikery provide a full package of flexible, integrated and discreet automated systems to deliver and control all aspects of entertainment, comfort and security.

With an emphasis on simplifying cutting edge technology and meeting a client's lifestyle ambitions and needs, Electrikery can guide you through the complete process from inception through design/installation, to commissioning and training.



Electrikery Limited • Macclesfield Road • Alderley Edge • Cheshire • SK9 7EL  
Tel 0161 241 3366 • Fax 0161 241 3355 • [www.electrikery.co.uk](http://www.electrikery.co.uk) • [info@electrikery.co.uk](mailto:info@electrikery.co.uk)



For the ultimate luxury short break to Dubai, the dramatic desert backdrop of the **Al Maha Desert Resort & Spa** (right) is close enough to the city for the high life but offers something out of the ordinary. Exclusive, eco-friendly and set within a nature conservation area, the hotel's Bedouin tent style suites are very private. Full Board includes all meals as well as a range of excursions such as 4x4 dune drives, falconry and camel riding with your personal ranger.



For longer, chilled-out stays, the iconic and elegant **Sandy Lane** in Barbados (left), with its opulent rooms and suites, stunning spa and challenging golf courses is very popular with discerning travellers. This has to be down to the relaxed atmosphere, unobtrusive service, very high levels of comfort and the excellent range of facilities.



Those looking for privacy will revel in the exclusive and luxurious **Villas Valriche** (right) in Mauritius. Stay in one of these magnificent and expansive villas and have access to all the facilities of sister 5 Star Hotel, **Heritage Le Telfair**. With access to Le Golf du Chateau, a tranquil, colonial spa and a new vibrant beach club.

**Prestbury Worldwide Resorts** is a family run business, offering luxury hotels and resorts around the world, in touch with what today's discerning traveller wants from their holidays; in essence, luxury but with great value.

prestbury**worldwideresorts**

Call Prestbury Worldwide Resorts on: 01625 855 840  
or email: [discover@prestburyworldwide.co.uk](mailto:discover@prestburyworldwide.co.uk)  
for further details or a quotation.  
[www.prestburytravelgroup.co.uk](http://www.prestburytravelgroup.co.uk)



## *Not Just a Legend, A Masterpiece*

For white sand beaches and balmy evenings discover the luxury of Sandy Lane with Prestbury Worldwide Resorts  
Visit the sumptuous spa and rejuvenate mind, body and soul with a soothing massage or therapeutic treatment.

Stay 7 nights pay for 5, Orchid Room, breakfast. Including flights from Manchester and London with Virgin Atlantic and private transfers. From **£2295 per person**, saving **£2120 per couple**. Offer also includes four rounds of golf at the Country Club or four \$50 spa vouchers pp and one spa massage for two.

prestbury**worldwideresorts**

For further information and reservations please call: 01625 855840 or email: [discover@prestburyworldwide.co.uk](mailto:discover@prestburyworldwide.co.uk)

[www.prestburytravelgroup.co.uk](http://www.prestburytravelgroup.co.uk)





ROLEX.COM

OYSTER PERPETUAL DAY-DATE II

ROLEX

**Lepps Ltd.**  
Jewellers

10 Bridge Street, Warrington, Cheshire WA1 2QS

Watch featured subject to stock availability.



## VOLANTE VELOCITY

Stuart Hall is bowled over by the beauty of the Aston Martin DBS Volante

The word 'potent' appears several times in Aston Martin's brochures. I first applied the word to the Spanish drink Anis – 'wood alcohol'. In 1953 together with two pals we had tottered thru' France in a battered, knackered Wolseley coupé to Port Bou nestled in the Pyrenees. Alas, in a scruffy bar a low life introduced us to Anis. Obviously it tasted of aniseed balls but washed down with local beer it induced lovely thoughts like floating in a sea of 'as you were' with a naked Brigitte Bardot. Reality was that when I awoke 24 hours later I found what was once my head, but, my wallet had disappeared – so too had the low life. Bueno Fortuna – the Spanish police chased the low life, recovered my wallet, chopped his hands off and banged him up in Chateau d'if for life. This was Franco's Spain. It took no prisoners.

So the word potent has a special significance in my douche experience. The Oxford dictionary defines potent as strong, mighty, powerful, having great force or influence, and intoxicating. Noel Coward, the Master once intoned: 'How potent cheap music is.' As he, the greatest wit of all time wrote plenty of cheap music I'll take his word. So how potent is the DBS Volante?

I journeyed to Stratstone Wilmslow to behold this creation. It's not simply a motor car but the zenith for the engineers who created it. The 'wow' factor is off the Richter scale. It is so beautiful that it could have been sculpted by Bernini or Donatello, those masters of perfection. From any angle the lines draw a sharp intake of breath, that tingling phosphorescence in the little grey cells that states this is a crystallisation of sporting beauty.

The car is in pale blue, always my favourite colour. I used to race an Austin Healey in pale blue. Even my crash helmet was pale blue. Suppose it was a love of those blue skies and iridescent summers I remember as a child. Suppose we never grow up.

As I embraced the Aston, the factotums at Stratstone observed my antics, knowing little smiles being exchanged. Guy is the Managing Director, Phillip Head of Sales. Mata Hare, the famous Russian spy, was behind her desk arranging special things for the Caucuses. She made me a coffee, or was it cocoa, or Ovaltine, or Bisto. I was on the point of proposing marriage, I swiftly altered tack! A tall, faired young gent was on the scene called Richard. >>





Stratstone had arranged a 'Tester's Day' for all the blokes and blokesses to appreciate their motor cars. In other words, 'Learn to Drive Proper'. Richard is a racing driver of repute. As he lives in Saddleworth we shared a love of fine ale, brass bands, village life, and rapid motor cars.

A youth was loitering lovingly caressing a DBS in the glittering showroom. There ensued a lot of banter. Damn it this is the golden age of the motor car. These are red letter days of fun, simple enjoyment of master craftsmen's creations. 'Get one bought,' I teased. 'Bought one last Christmas,' he replied. 'Ask yer Dad.' I was about to ask when Dad appeared with t'wife and daughter in law.

'What about it Dad?' Dad laughed. A Lancashire Lad obviously worth a shilling or two. Only multi billionaires can afford to be dressed by Oxfam and pretend they're skint. Of course the Fotheringay-Whittingstall landed gentry still buy Aston Martins, but now Jim Smith and Ethel can say blow it, we've made it, why give it to Gordon Brown. Dad bought another Aston!

After all this Tom Foolery t'was down to business.

The test drive with Richard. We downed the hood, watching it silently glide over and down into the boot. The lines of the car even more rakish, raffishingley rip snorting than ever. 'Hoh-hoh-hoh,' I declared. 'Tis a family car.' And thus inserted Chris, our esteemed photographer in the back seat. We removed his legs surgically, and he was thus the perfect fit.

Richard inserted a key into the dash, pressed button 'Start' and 6 litres, 12 cylinders of raw power ripped into life. Was Earth's creation like this? A massive rumble from the exhausts. 500 horsepower unleashed. Was Vesuvius erupting? A rap on the throttle and that unfettered joy of giants tearing calico hit the desert Wilmslow air. Like the conclusion of Wagner's Tristan und Isolde, or a thousand thrushes bursting into song, it's a sound to make the pulses race, and the heart sing. This isn't a motor car; it's an elevation to life on another planet.

The seats are soft refined leather. The dash high tech but strangely comforting, non aggressive. Richard switches on the Bang and Olufsen BeoSound. Tiny speakers emerge from the top of the dash. Mellow music issued forth. What next? Gene Kelly in a ballet sequence? >>

# Tom Howley

Bespoke Furniture

EATING

SLEEPING

BATHING

LIVING

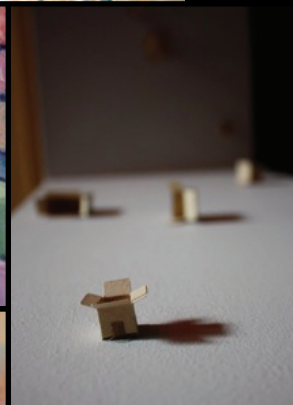
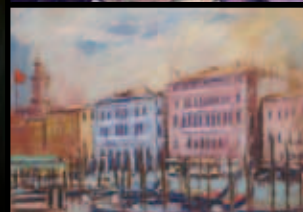


ALTRINCHAM SHOWROOM  
30 CHURCH STREET  
ALTRINCHAM, CHESHIRE  
WA14 4DW  
TEL: 0161 929 5392

ALDERLEY EDGE SHOWROOM  
30 LONDON ROAD  
ALDERLEY EDGE, CHESHIRE  
SK9 7DZ  
TEL: 01625 599 636

ESHER SHOWROOM  
99 HIGH STREET  
ESHER, SURREY  
KT10 9QE  
TEL: 01372 462 378





blott

53 King Street, Blackpool FY1 3EJ  
Tel: 01253 620000  
www.blott.co.uk



Richard smilingly demonstrates a multitude of gadgets of sophisticated Adaptive Damping system which offers five different settings. It alters the suspension to give the driver total control in all driving conditions. The rigid bonded aluminium chassis and extensive use of carbon fibre eliminate that coupé whiplash that normally comes when you take the top off. The disc brakes are carbon fibre, so huge they'd stop a Jumbo on take off. Fifty man hours it's taken to give the paintwork on its sleek body that gleam and shine that states I am the ultimate crystallisation of consummate style.

We burble along the highways and byways, Chris snapping away and demanding back his legs. The Aston glides like a flying carpet, no teeth chattering, backside bumping you get with other sports cars. Then on the open road, ramp on the loud pedal and it surges forth like a leopard on the rampage. Six litres, 500 horsepower, top speed 190mph. I take over. Richard smiles, he too raced Austin Healeys. I play with the paddles either side of the steering wheel. Once you play the automatic six speeds are cancelled out, you have to press the D button to return to automatic. I always change down for corners. But I forgot once

to press D. Richard deducted one brownie point! I remarked that the Aston had that Germanic feel. Astute. The engine is built in Cologne, part of what used to be the Ford Empire, when Ford owned Aston. The gearbox too is assembled in Germany. Everything else is built in England. Hand built, hand crafted by world class engineers.

Aston Martin is owned by Kuwaiti investment houses who bought the marque from Ford in 2007. Aston's roots go back to 1913. Those 96 years have seen the company on a roller coaster ride, but always quality shone through. Aston survived because the discerning wanted something above the pedestrian, the plain, the built to a budget run of the mill. This DBS is the ultimate grand tourer. It imbues not just the pinnacle of driving pleasure, but pride in the fact that it's English. Wave the flag, shout it out loud. I've earned a bob or two, this is the golden age, I don't want an electric milk float, I want, I deserve, the Aston Martin DBS Volante.

Exit pursued by a Bear, a Kuwaiti bank and C.E.O. Dr Ulrich Bez!





imagination has no boundries



from the raw material to this...



...the  
italian  
way



**OGGI LTD**  
stonecraft

When it comes to trend setting design no other company comes close. Let our passion be your inspiration.

Our portfolio is the result of a rigorous on-going program of uncompromising product selection aimed at providing our clientele with an unparalleled natural stone range of slab, tile mosaic and products crafted from dimensional stone.

The emphasis is always on shipping selected first grade natural stone material from quarries with a track record for consistent product selection and documented durable reserves.

OPENING TIMES: MONDAY TO SATURDAY 0900 - 1700 HOURS OR BY APPOINTMENT  
TEL 01743 466039 FAX 01743 466041  
EMAIL: [oggitrading@aol.com](mailto:oggitrading@aol.com)  
VISIT US AT OUR SUPERB SHOWROOM  
24 VANGUARD WAY | SHREWSBURY | SY1 3TG

[www.oggi.co.uk](http://www.oggi.co.uk)

Importers | Fabricator | Retailers & Wholesalers of Natural Stone

Advertisement Feature

## The best of natural stones



**OGGI LTD trades and processes natural stone like no other company.**

**From the sourcing of "select blocks" from quarries around the Mediterranean to the delivery of slabs for all types of cladding and worktop applications through to tiles for walls and floors.**

OGGI LTD brings truly inspirational design flair to modern day living environments with the limits on design set only by the imagination or remit of the client. The inspiration for all of this perhaps not surprisingly comes from the pervasive Italian influence of its principal shareholder.

To work professionally and competently within the natural stone industry requires a comprehensive understanding of a stone's suitability for any given application. This knowledge base is not developed overnight, but rather acquired over time, through continuous project installation in the field and through a commitment to remain up to date with the latest technological developments in

substrate, adhesive and sealant technology.

For each stone sale, OGGI LTD can provide essential advice on installation procedures and suitability of substrates, we can execute not only the installation of the chosen tile or slab cladding, but "in extremis" can provide a whole turnkey build service from the construction of sub-floors incorporating underfloor heating systems with complimentary thermal heat insulation and expansion jointing.

In short, OGGI LTD is the real deal offering full service importation, design, sales, fabrication and installation facilities. Only the most select and

consistent natural stone tiles and slab are sold ensuring that the client always receives first quality product.

**Visit OGGI LTD now at their superb showroom in Shrewsbury, located at: 24 Vanguard Way, Battlefield, Shrewsbury SY1 3TG  
Tel: 01743 466039 Fax: 01743 466041  
Email: [oggitrading@aol.com](mailto:oggitrading@aol.com)**

See our recent projects at  
[www.oggi.co.uk](http://www.oggi.co.uk)

For the REAL DEAL and that DIFFERENCE that only **OGGI** can make, telephone **OGGI** now and be inspired.





## ASTON MARTIN V8 VANTAGE ROADSTER

New Performance Options Available for 4.3 litre V8 Vantage

The V8 Vantage Roadster embodies the qualities that are integral to Aston Martin: Power, Beauty and Soul. Representing the essence of pure driving pleasure, the Roadster is a compact sports car that offers an astonishing

blend of performance and exhilaration, a car with two distinct personalities: Open and invigorating, or closed, cossetting and protective.



indulge your senses....



....the latest state of the art technology brought to you by nirvana audio visual.



the north west's leading provider of:  
home automation, multi room audio, home cinema, wireless audio, lighting control



tel: 0800 622 6884 | email: [info@nirvanaaudiovisual.co.uk](mailto:info@nirvanaaudiovisual.co.uk) | website: [www.nirvanaaudiovisual.co.uk](http://www.nirvanaaudiovisual.co.uk)



## ASTON MARTIN V8 VANTAGE ROADSTER

The V8 Vantage is inherently taut and agile. Its all-alloy structure creates an immensely strong passenger cell, and further protection is provided by deformable front and rear crumple zones designed to absorb crash energy. Excellent side impact protection is also inbuilt, thanks to the large sills, strong roof pillars, door impact beams and the substantial dashboard and footwell structures. Both driver and passenger benefit from dual-stage airbags (deployed in one of two stages,



depending on the severity of the accident) and side airbags. The mid-mounted aluminium-encased fuel cell is not only safe but also improves balance and handling.

Aston Martin's V8 Vantage – originally launched to widespread critical acclaim at the Geneva Motor Show in 2005 – has received significant technical enhancements, reaffirming the car's position as one of the world's most desirable and exhilarating sports cars.

"timeless design and understated elegance"





refurbished  
in 2010



## Windermere Marina Village

the north's premier inland marina & holiday resort

Windermere Marina Village offers you moorings and luxury self-catering accommodation in the heart of the Lake District - one of the country's most beautiful locations.

### Moorings at Windermere Marina

Moor your boat with us and you will enjoy shelter, seclusion & fantastic facilities.

- **Annual, winter & holiday moorings**
- **Fully serviced jetty mooring with mains electricity**

### Self-Catering at Windermere Marina

Relax in luxurious surroundings after a day exploring the magnificence of the Lake District.

- **Beautifully furnished & fully equipped**
- **Sleep between 2 & 6 people**
- **Available for 3, 4 or 7 nights**

For further information on our moorings or luxury self-catering accommodation please call 015394 46551 or email [info@wmv.co.uk](mailto:info@wmv.co.uk).



## ASTON MARTIN V8 VANTAGE ROADSTER

While the universally distinctive and award-winning shape of the V8 Vantage is retained, the car benefits from a number of technical changes which include significantly up-rated engine performance from a new 4.7 litre power unit in both Coupe and Roadster variants.

Other changes include revised dynamics to take full advantage of increased power and torque availability, improved Sportshift™ transmission software and a new



sports suspension option.

Inside, the changes include a new centre console and revised switchgear and the introduction of an ECU replacing the previous V8 Vantage key. Externally, the

acclaimed V8 Vantage design appearance is enhanced with a range of new standard and optional 19" alloy wheels.



[www.wmv.co.uk](http://www.wmv.co.uk)

For further information or reservations  
T 015394 46551 | E [info@wmv.co.uk](mailto:info@wmv.co.uk)

Windermere Marina Village | Bowness-on-Windermere | Cumbria | LA23 3JQ





## FOSTERS PRESTIGE accident management

Has your pride and joy been damaged in an accident?

Fosters Prestige have a dedicated team who specialise in dealing with prestige vehicle claims. Prestige vehicle claims are more complex due to their high value which often involves dispute.

Did you know you can claim the loss in value of your vehicle even following an approved repair? Fosters Prestige can recover this, in addition to all your financial losses at no cost to you.

### Our Services Include

- Free expert legal advice
- Fully approved vehicle repairs
- Recovery of vehicle loss in value
- All financial losses recovered
- Vehicle recovery and storage
- Like for like vehicle replacement
- Personal injury and rehabilitation



**Tel: 0844 811 0880**

Visit our website for full details: [www.fostersprestige.co.uk](http://www.fostersprestige.co.uk)



## LE MANS 24 HR RACE WITH STRATSTONE EXPERIENCES

High performance cars thundering down the straight at over 300 km/h...  
Spectators gripped by the suspense of this human and technical challenge...  
Experienced drivers pushing back the limits of performance....  
Let yourself be caught up in the spell cast by the Le Mans 24 Hour race.....

**Be wrapped up, carried away and seduced.....**

Stratstone will once again be travelling down to the Le Mans 24hr race in true style.  
This year promises to be an occasion to remember.

This all inclusive event is exclusive to Stratstone customers and is the best way to do the 79th Le Mans 24 Hour Race.

The race on Saturday 11th June 2011 and Sunday 12th June 2011, and the Stratstone Package runs from Thursday 9th June to Monday 13th June 2011.







# Synergy AV

## Total Home Control Specialists



As a long established home installaton company, we understand the importance of creating intuitive systems that are a joy to use. Our bespoke home automation solutions are tailored to your exact requirements, whether you want the ultimate sound quality, a CCTV system that you can access from anywhere in the world or the ability to look at family photos on any TV in the house. All heating, lighting, security and music can be controlled from one simple touchpanel (or even your iPad or iPhone) Each element integrating and working seamlessly together. A single button push, such as 'Watch a Movie' will bring down the lights, close the blinds, set the temperature to 19c and bring up a selection of films for you to choose from.

Make an appointment to see or showrooms and experience Synergy Home Automation for yourself.

Tel: 01260 280017

12a West Street, Congleton, Cheshire, CW12 1JR.



www.synergyav.co.uk

## ASTON MARTIN DB5

Production Dates: July 1963 – September 1965

Perhaps the most famous Aston Martin because of the specially equipped silver birch DB5 that starred in the James Bond films "Goldfinger" and "Thunderball". The DB5 made a comeback to the big screen in the 1995 film "GoldenEye".

Regarded by many as the most beautiful Aston Martin produced, DB5 shares many similar traits to DB4. However, DB5's most substantial change occurred under the bonnet. The 6 cylinder engine increased its capacity to 4 litres by increasing the bore to 96mm. Significant too was the introduction of a true full synchromesh ZF 5 speed gearbox. Other chassis changes included the adoption of the Girling disc brakes that had only been used on the DB4GT, and 15" wheels.

A convertible was also offered and was available with a steel hard top with an exceptionally large rear window.

Specification  
Price New: £4,175 (DB5), £4,490 (Convertible)  
Engine: dohc I-6, 3995 cc, 282 bhp @ 5500 rpm, 288 lbs-ft @ 3850 rpm (Vantage option: 314bhp @ 5750 rpm, torque N/A)

Transmission: 4-speed manual with optional overdrive, ZF 5-speed manual (standard from mid-1964), and optional Borg-Warner 3-speed automatic

Suspension: Front: upper-and-lower A-arms, coil springs, anti-roll bar Rear: live axle, Watt linkage, trailing links, coil springs

Brakes: Servo assisted front/rear discs

Length: 15'0"

Width: 5'6"

Wheelbase: 8'2"

Weight: 1466 kg

Top Speed: 142 mph

0-60 mph: 7.1 sec.

Production: 886 Standard

123 Convertibles  
12 Shooting Brakes







## Setting The Standard

Lloyds Autobody Ringway was established in August 2000 catering for the High Performance and Prestige vehicle market. We have grown to become Manchester's Premiere Manufacturers Approved Accident Repair Centre, equipped with the latest technology to repair your vehicle back to Factory Standards.

We handle your claim regardless of Insurer with one aim "Quality Without Compromise"

Lloyds Autobody Ringway gained accreditation for Aston Martin Mid 2007. This Award is only open to a select few of vehicle repairers throughout the United Kingdom. We are Audited yearly to ensure our repairs and processes are in line with Aston Martin's "commitment to care".

We are proud to maintain a close working Partnership with Stratstone of Wilmslow and look forward to the future together.

With this in mind Lloyds Autobody aims to continually set new standards of quality control and customer care, by ensuring our personal commitment to "Setting the Standard".

### Dedicated To Excellence

We offer free advice on all body work requirements, whether insurance, should I claim, what to do in the case of an accident, or just a summer time clean of your vehicles paint work. We can offer you:-

- On/Off Site estimating – we can come to you\*
- Free collection and delivery service\*
- Valeting and Specialist Waxing
- Hood re-proofing for the Winter.

Located close to Manchester Airport we cater for you and your vehicle's needs by offering a service which is open and friendly, with honest opinions, feel free to come and visit us anytime

Tele: 0161 437 9911

Fax : 0161 493 9911

[www.lloyds-autobody.com](http://www.lloyds-autobody.com)

email: [ringway@lloyds-autobody.com](mailto:ringway@lloyds-autobody.com)

\*mileage restrictions apply please call to arrange



Approved Aston Martin Body repair Centre

Unit 11, Ringway Trading Estate, Mollington Road, Manchester M22 5LH





## ASTON MARTIN RAPIDE

The World's Most Elegant Four-Door Sports Car

The elegant Rapide, functional yet luxurious, provides space for up to four adults combined with an engaging driving experience synonymous with all Aston Martins.

Like all Aston Martins, the Rapide has undergone the marque's strict and rigorous testing programme to ensure the required levels of quality, durability, performance and dynamics are met.



# Explore with Seabourn



"Twenty years from now you will be more disappointed by the things that you didn't do than by the ones you did do. So throw off the bowlines. Sail away from the safe harbor. Catch the trade winds in your sails. Explore. Dream. Discover." - Mark Twain

## › Your Yachts

Adventure and luxury await you aboard The Yachts of Seabourn. With their unmatched sense of style, elegance and grace. The Yachts of Seabourn beckon you to travel beyond the bounds of the imagination.

Aboard Seabourn, every desire is met promptly and with a welcoming smile. Whether it's a warm blanket and a cup of gourmet hot chocolate as you drift along the Norwegian Fjords or a relaxing neck massage poolside, you'll feel that you're a member of a very exclusive club.

Step aboard any one of our yachts - Seabourn Pride, Seabourn Spirit, Seabourn Legend or the new Seabourn Odyssey and Seabourn Sojourn - and you'll enjoy a sophisticated and luxurious journey like no other.



### Seabourn Sojourn

29th November 2010 • 12 nights

Caribbean

**Suite Prices from £2999 per person**

Inclusive of London flights and transfers in resort

### Seabourn Pride

5th January 2011 • 14 nights

Vietnam, China & Thailand

**Suite Prices from £3399 per person**

Inclusive of London flights and transfers in resort

### Seabourn Odyssey

22nd January 2011 • 21 nights

South America (Valparaiso-Buenos Aires)

**Suite Prices from £6299 per person**

Inclusive of London flights and transfers in resort

### Seabourn Spirit

4th March 2011 • 18 nights

Indian Ocean (Singapore – Dubai)

**Suite Prices from £4399 per person**

Inclusive of London flights and transfers in resort

All prices quoted are subject to availability and reconfirmation at the time of booking. Other dates and itineraries are available and for more information please contact **01524 771701** or visit **www.cruiseoffers.com**

Also find us on:



E4353



## ASTON MARTIN RAPIDE

Around 50 prototypes were built all designed to be subjected to the very toughest tests. For example, hot weather testing took place in Death Valley, USA and Kuwait, Middle East exposing the car to temperatures in excess of 50 degrees Celsius, while cold weather assessments in Sweden and in a cold testing chamber saw prototypes subjected to -40 degrees Celsius. High speed testing was conducted at the famous Nardo proving ground in Italy, while dynamics were honed at the Nürburgring, Germany where prototypes were relentlessly run for 8,000 km on the Nordschleife to test all components pushing them to the very limits.

The Rapide is a sports car – a thoroughbred which can be



"a thoroughbred which can be enjoyed by four people"

enjoyed by four people in unison. Aston Martin engineers have spent thousands of hours tuning suspension, throttle maps, tyres, brakes and steering to create a car that, while practical, also provides a dynamically engaging drive. Despite the extra versatility, the low roof line, and therefore low centre of gravity, makes Rapide feel like an agile coupe.

As the culmination of the Aston Martin range, Aston Martin's engineers have gained much experience and learning from the development of the DBS, DB9 and

Vantage range of sports cars – this wealth and breadth of experience has all been channelled into Rapide to produce a four door with unrivalled sports car



# Tre-Ysgawen Hall

## Country House Hotel & Spa



To celebrate winning

### “BEST HOTEL”

on Anglesey for the 2<sup>nd</sup> year running and being voted in the top 13 of hotels in Wales by Visit Wales we have the following overnight offer:-

**£75.00 per person, per night**

*This will include breakfast and complimentary use of our spa facility.*

Receive 10% off any of our beauty treatments where therapists use the best products from  
DECLEOR GUINOT JESSICA ALGOLOGIE CALIFORNIA TAN  
PHD AND UNIVERSAL CONTOUR WRAP

[www.treysgawen-hall.co.uk](http://www.treysgawen-hall.co.uk)

Capel Coch, Llangefni, Isle of Anglesey LL77 7UR • Tel: 01248 750750 • Email: [enquiries@treysgawen-hall.co.uk](mailto:enquiries@treysgawen-hall.co.uk)



### ASTON MARTIN RAPIDE

characteristics. The basic ingredients have already been proven: the powerful engine, the lightweight yet stiff understructure, the honing in the toughest environments around the world and the exhaust note which is always evocative no matter which model. Applying these characteristics to Rapide alongside a car which is a practical four-door, was the engineers' greatest challenge to date. The result is a car that feels every bit a sports car as its siblings, yet provides versatility in a beautiful package.



With the six-speed Touchtronic 2 automatic gearbox mounted to the rear of the car on the transaxle, the Rapide's weight balance is near perfect at: 51:49, contributing to its outstanding dynamics. This provides the driver with an engaging drive on twisty roads, and a refined, relaxed and effortless drive on motorways and main roads. The 20" wheels are clad with Bridgestone Potenza S001

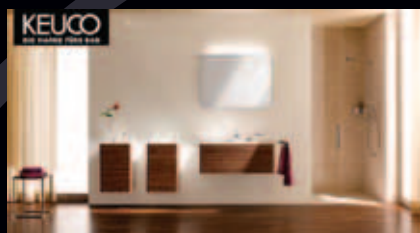
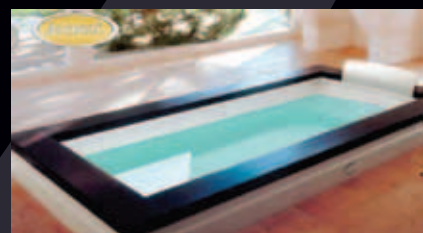
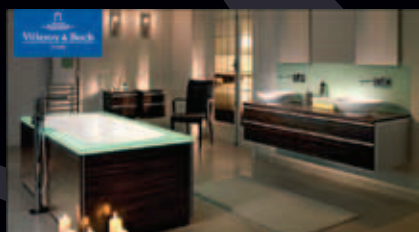
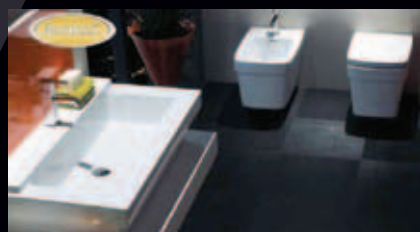
(Front: 245/40 R20, Rear: 295/35 R20) but specifically for Rapide feature a taller side wall to help dial out vibration and contribute to a quieter cabin.











# HOUSE OF BESPOKE BATHROOMS

At Bespoke Bathrooms we know our customers appreciate the finest things in life. For this reason Jonathan Quinn has put together this breathtaking showroom in Maghull, Liverpool. Whether you are looking for a traditional-style bathroom or contemporary glamour, we have everything on offer from specially cut granite to bespoke cut glass. We also offer a design and full installation service.

*BB*

92A Liverpool Road North, Maghull L31 2HN

Tel: 0151 531 1597 Fax: 0151 520 1953

[www.bespoke-bathrooms.co.uk](http://www.bespoke-bathrooms.co.uk)

[bespokebathrooms@btconnect.com](mailto:bespokebathrooms@btconnect.com)

VILLEROY & BOCH • DURAVIT • LAUFEN • AXOR HANS GROHE • ACOVA • BISQUE • CROSSWATER • VICTORIA & ALBERT • MATKI • HUPPE • TEUCO • JACUZZI • AESTUS • SALONI TILES • DAVROC  
DORNBRACHT • AQATA • KEUCO • VADO • FLAMINIA • BISAZZA • PHARO • ALAPE





Chateau offers a vast range of luxury furniture at prices only normally enjoyed by the hotel industry and interior designers. We Offer a bespoke service where we can make many styles of furniture in many different wood finishes and fabric combinations.

We stock a large selection of our most popular furniture and most items are delivered within 14 days. We have French crystal chandeliers, Designer and Classical Table lamps, Thousands of accessories and luxurious soft furnishings to add the perfect finishing touches.

We specialize in grand furniture, statement pieces and beautiful mirrors. We have a large showroom in the centre of the historical City of Chester where you can come and view the luxury items.



Chateau Luxury Furniture | 33 Pepper Street | Chester CH1 1DF | Tel: 0800 043 5151 | Chester

Tel: 01244 401689

[www.chateau.co.uk](http://www.chateau.co.uk)  
Email : [info@chateau.co.uk](mailto:info@chateau.co.uk)







**lighting architecture**  
Illuminating your world

A bespoke design, supply & installation service for all your lighting and control needs, simple or sophisticated.

■ Design ■ Control ■ Supply ■ Install

■ Home ■ Garden ■ Pool ■ Office

Tel: 01260 224191

Email: [Solutions@lightingarchitecture.co.uk](mailto:Solutions@lightingarchitecture.co.uk)

[www.lightingarchitecture.co.uk](http://www.lightingarchitecture.co.uk)



**Intecho**  
Intelligent Buildings

Tel: 08450 948489

Email: [info@intecho.co.uk](mailto:info@intecho.co.uk)

[www.intecho.co.uk](http://www.intecho.co.uk)



## ASTON MARTIN TODAY

'Over the past nine decades, Aston Martin has witnessed many changes. In a long and distinguished history, Aston Martin has seen some good times and some not so good times.

The fact that Aston Martin has survived is testament to the strength and resolve of everyone who has ever been involved with the company: customers and employees alike.

We are passionate about the cars we produce and we know this is a passion shared by our enthusiastic owners. All of our sports cars will continue to be hand-built and bespoke but using high technology processes in a very modern environment.

That ethos goes right back to 1914 and the very beginnings of the company. Our founders, Lionel Martin and Robert Bamford, believed that a sports car should have a distinctive and individual character. They felt it should be built to the highest standards and be exhilarating to drive and own – many things have changed over the ensuing ninety plus years, but those goals are still very relevant to us today.

An Aston Martin combines three important elements: power, beauty and soul. Aston Martins are truly special – they always have been and always will be.'

Dr Ulrich Bez, Chief Executive Officer, Aston Martin







# VAVAVOOM

Wilmslow's Premier Hair and Beauty Salon



Vavavoom's highly qualified and experienced team are passionate about delivering the look you desire in our state of the art salon.

We lead the way in Cheshire using the very best the Hair and Beauty Industry has to offer including the ultra hygienic Easydry™ towel system, Kérastase's amazing Chronologiste hair ritual and Cloud Nine's "TheO".

Indulgent pampering from the moment you arrive including complimentary champagne, essential reading and Wella's finest massage chairs.

01625 520255  
[info@vavavoomhair.co.uk](mailto:info@vavavoomhair.co.uk)  
[www.vavavoomhair.co.uk](http://www.vavavoomhair.co.uk)  
 11b Water Lane, Wilmslow

KÉRASTASE  
PARIS  
Premier Salon

THEO  
BY CLOUD NINE  
The next generation of curls

REDKEN  
5TH AVENUE NYC

WELLA  
PROFESSIONALS

DECLÉOR  
PARIS

PHILIP  
KINGSLEY



# SI BELLE



You make the impression... **SI BELLE** helps.

50A, High Street,  
**TARPORLEY**  
 CHESHIRE  
 CW6 0AG  
 01829 733251

*Moschino Love*

*Vivienne Westwood - Anglomania*

*Versace Jeans Couture*

*Class Roberto Cavalli*

*Paul Smith mainline*

*Escada Sport*

*Amanda Wakeley*

*Petrovich & Robinson*

*Beate Heymann*

*Bleu Blanc Rouge*

*Indies*

*Kenzo*

*Bernshaw*

*Vera Mont*

*to name but a few!*

Whatever you are looking for, for whatever occasion,  
 come and see the difference **SI BELLE** can make

Opening hours: Mon - Sat: 9:30 to 5:30  
 Sundays & evenings by appointment



Moschino Love

Why not also visit our sister boutiques for even more choice and style:

CLEOPATRA, 30, High Street, TARPORLEY, Cheshire CW6 0DX  
*Papillon*, 36A, High Street, TARVIN, Chester CH3 8EE

Tel. 01829 733851  
 Tel. 01829 740555





# A WEALTH OF EXPERTISE ON YOUR DOORSTEP



ST. JAMES'S PLACE  
WEALTH MANAGEMENT



Winner  
**The Daily Telegraph**  
Wealth Manager  
of the Year 2007 & 2008

Winner  
**The Daily Telegraph**  
Best Performing Fund  
2009

We have the knowledge to help you successfully secure and enhance your financial future by offering specialist advice in a wide range of areas including:

- Investment Growth
- Retirement Planning
- Inheritance Tax Saving

For further details or to request one of our guides to Wealth Management, Inheritance Tax or Retirement Planning, contact our local office:

**Austin E. Rawcliffe** FCMA; Dip PFS  
Partner of the St. James's Place Partnership

Pembroke House, 3 Altrincham Road,  
Wilmslow, Cheshire, SK9 5ND

**Tel: 01625 522694**

Email: [austin.rawcliffe@sjpp.co.uk](mailto:austin.rawcliffe@sjpp.co.uk)

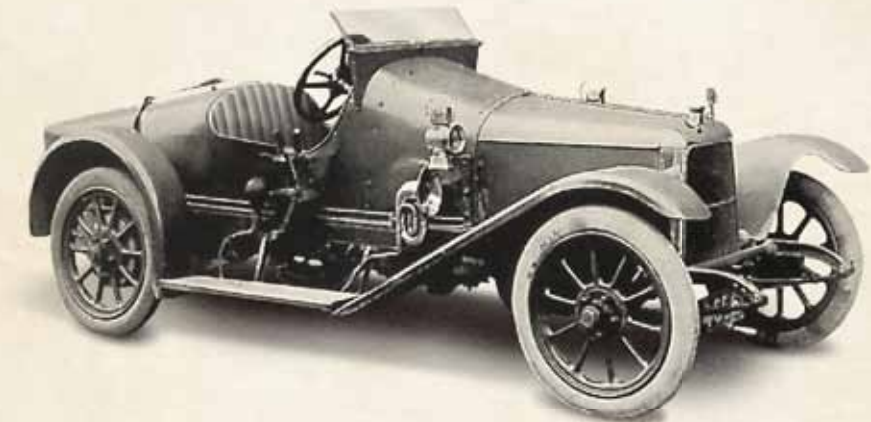
Website: [www.austinrawcliffe.co.uk](http://www.austinrawcliffe.co.uk)

## FREE GUIDES

INHERITANCE TAX    WEALTH MANAGEMENT    RETIREMENT PLANNING



Please call  
**01625 522694**  
to request your free guide.



## ASTON MARTIN LIFE

Gaydon, Warwickshire. When company founder Lionel Martin first started building cars, the specification was for 'a quality car of good performance and appearance: a car for the discerning owner-driver with fast touring in mind, designed, developed, engineered and built as an individual car'. It is a principle that exists to this day.

The initial objective of the partnership formed in 1913 between Robert Bamford and Lionel Martin was the sale and preparation of Singer cars, for hill climbing and racing. It was Martin's own successful performances at the Aston Hill Climb in Buckinghamshire that was to give the cars he went on to produce their famous name: Aston Martin. Following the acquisition of

premises in Henniker Mews, South Kensington, London, plans to build a car were announced in 1914. Fitted with a Coventry Simplex side-valve engine, the first Bamford & Martin car – later known as 'Coal Scuttle' – appeared the following year.

After the 1914/18 War, work began again at new premises in Abingdon Road, Kensington. Count Zborowski agreed to provide finance for the company, which enabled the building of two Grand Prix cars to contest the French Grand Prix in 1922. In that same year, on 24 May, an Aston Martin, affectionately known as 'Bunny' broke

10 world records at Brooklands, during a run of 16 and a half hours, averaging 76.04 mph.

**"10 world records at Brooklands"**



# Awaiting your discovery a holiday lifestyle as individual as you are

Luxury holiday homes for sale at Haulfryn's flagship location The Warren. Perfectly located by the beach at Abersoch on the Llyn Peninsula.

**Don't miss out!  
Limited number of  
plots available**



*Haulfryn's flagship park, The Warren still looks fresh and modern 75 years on.*

## The Warren, 75 years young!

Flagship of Haulfryn's portfolio of parks, The Warren still looks fresh and modern 75 years on.

**H**aulfryn Group is one of the largest holiday park operators in the UK, a family owned company celebrating 75 years this year. It runs 20 holiday parks in some of the most desirable parts of Britain with 11 in North Wales and 9 in the South of England.

Prices range from £29,995 for a brand new 3 bedroom caravan, at a selection of our parks, to £500,000 for a luxury sea front lodge at Haulfryn's exclusive flagship park The Warren.

### THE WARREN

A jewel in Haulfryn's crown, The Warren is the sort of place you always hope to find, and never leave when you do. Located on the Llyn Peninsula in North Wales, beautiful scenery, miles of breathtaking coastal walks and the constant backdrop of Snowdonia; sandy beaches, rocky headlands and a mild and welcoming climate all conspire to allow nature to be seen at its best.

For those who love water sports The Warren boasts an extra dimension, not just the fabulous beach with the promise of every variety of boat and sailing, but in the magnificent pool complex that forms an important part of The Warren's superb leisure facilities, these include:

- Fully equipped Techno gym
- 3 outdoor swimming pools and flume
- Indoor heated pool
- Sauna and steam rooms
- Badminton, squash and outdoor tennis courts
- Health and beauty treatments
- Games lobby
- Soft play area
- Exclusive restaurant and bar

For more information please call The Warren on **01758 714100** or visit [www.the-warren.co.uk](http://www.the-warren.co.uk)

### Fact File: The Exclusive Sea Front lodges range between £425,000 and £500,000

#### All include the following:

- 3 bedrooms - (can accommodate 4 bedrooms if required)
- Landscaped decking area
- Remote controlled velux windows
- Under Floor Heating (remote controlled)
- Bi Fold Patio Doors (they open up completely)
- Integrated audio TV System
- Full Size Fridge Freezer
- Choice of built in microwave or stylish espresso coffee machine
- Separate wine fridge
- En-suite bathroom with choice of double shower or full size bath
- Luxury family bathroom with double shower head and body dryer!

For your FREE information pack please call: **01758 714100**  
or visit us online at [www.the-warren.co.uk](http://www.the-warren.co.uk)

Please quote ASM10 when calling

**The Warren, Abersoch, Pwllheli, Gwynedd LL53 7AA**







## First Impressions...

### EVENTS

- Private Parties
- Corporate Events
- Weddings
- Charity Balls
- Special Celebrations
- Christenings
- Themed Events
- Christmas Parties
- Promotions
- Launches
- Conference & Business Meetings

### SERVICES

- Event Management
- Wedding Planning
- Design & Concept
- Entertainment Supply
- Room Dressing and Floral Supply
- Performer and Artist Booking
- Prop, Costume & Scenic Design
- Conference Co-ordination
- Venue Sourcing & Management
- Celebrity Booking
- Lighting & Special FX

...make lasting memories



By 1924 the company was offering sports and touring models, which soon gained a reputation for long life and reliability. The Charnwood family held what remained of the company after the departure of Lionel Martin in 1925 and it was Lord Charnwood who, with Augustus Cesare Bertelli and William Somerville Renwick, was to form Aston Martin Motors in new premises at Victoria Road, Feltham, Middlesex, during 1926. The famous International model had evolved by 1929 and this established new standards for roadholding and handling. Bertelli sustained a vigorous and successful competition programme and in 1932, he and Pat Driscoll won the Biennial Cup in the Le Mans 24 Hour race. Charles Martin & Charles Brackenbury also won the Cup in 1935 when they finished third overall and established a 1.5-litre class record, which was not broken until 1950.

Towards the end of 1932, the company passed into the hands of Sir Arthur Sutherland, whose son, Gordon, took on its management. By this time, the International had been followed by the equally famous Le Mans model. A Mark II version appeared in 1934, from which was developed the famous Ulster model.

Early in 1939, a prototype was built using, for the first time on an Aston Martin, independent front suspension together with a Cotal electric gearbox. It was all packaged in an early form of spaceframe. This car, known as the Atom, was later to form the basis of the first generation of post-war Aston Martins. In 1947 the company was taken over by David Brown, Chairman of the David Brown group of companies, and the 2-Litre Sports entered production the following year. It was decided to enter one of these cars in that year's 24-hour sports car race at Spa. Driven single-handed by 'Jock' St John Horsfall, it scored an outright victory.

At the end of 1947 David Brown also acquired Lagonda. Despite its continental sounding name, Lagonda has always been a British car, the name being an echo of founder Wilbur Gunn's early life at Lagonda, Springfield, Ohio. In 1898, Gunn produced a small, single-cylinder engine to power his bicycle. It was built in the greenhouse of his house at Staines, the site that was eventually to become the Lagonda factory. Motorcycles followed and then, in 1904, came the first of his Tricars.





The famous V12 Lagonda, introduced in 1937 – two years after Lagonda had won Le Mans with a 4.5-litre, six-cylinder model – was a massively powerful model with independent front suspension and many other advanced features. A new, smaller Lagonda appeared in 1945 with a 2.6-litre, twin overhead camshaft engine. This engine, designed under WO Bentley's supervision, was to play an important part in the post-war history of both Aston Martin and Lagonda. In April 1950 the DB2 was announced, fitted with the Lagonda-derived engine. At Le Mans a DB2 took equal first in the Index of Performance and won its class. Both marques were now being built at Hanworth Park in Feltham; in 1954, however, David Brown bought Tickford Motor Bodies in Newport Pagnell, which was to become home to Aston Martin Lagonda for almost half a century.

In 1957, the DB Mark III superseded the DB2/4 Mark II. It featured disc brakes – a direct development of the company's racing experience. Since Aston Martin's success at Spa in 1948, the racing team had continued

under the direction of John Wyer. The culmination of this programme was the phenomenal success enjoyed by the DBR1 that won Le Mans and the World Sports Car Championship in 1959. The DB4 was introduced in 1958 with a 3.7-litre, aluminium alloy engine designed by Tadek Marek and, to create a high level of torsional stiffness without excess weight, it featured a tubular 'Superleggera' frame inspired by Italian coachbuilder Touring. A variation of this platform chassis was also used for the Lagonda Rapide.

In October 1963, the DB5 was introduced, using a 4.0-litre version of the engine. Probably the most famous DB5 was the car converted for Ian Fleming's fictional character, James Bond. Built for the film 'Goldfinger' and used, later, in 'Thunderball', it incorporated machine guns, a passenger ejector seat and hydraulic over-rider rams and had equipment for projecting oil, nails and smoke. The DB6 appeared in 1965 and, with its Mk2 version, was to remain in production until 1970. The convertible version, known as the Volante,

# no limits in interior design



**free interior  
design service.**

book now in-store  
or call 0151 236 9280

**BoConcept**<sup>®</sup>  
urban design

BoConcept Liverpool . 22-24 Chapel Street . Liverpool . L3 9AG  
Tel. 0151 236 9280    [www.boconcept.co.uk](http://www.boconcept.co.uk)    [liverpool@boconcept.co.uk](mailto:liverpool@boconcept.co.uk)





# FREEMASON'S COUNTRY INN

Well worth the journey! Enjoy great food and drink in stylish and award winning surroundings. By Jason Daniel

If you are looking for a relaxed atmosphere, beautiful surroundings and a great dining experience? Then look no further than The Freemasons Country inn, Wiswell. Just one hour from Cheshire where fabulous food is always on the menu and served in an elegant and relaxed rural setting. A short trip on the M6 north leaving at junction 31 sees the picturesque Ribble Valley opening out in front of you, then the A59 will take you to one of the best kept secrets of the Valley – a true hidden gem.

Since reopening in the summer of 2009, the Freemasons has created a loyal and satisfied clientele and I would urge you to make the trip and sample the delights they have on offer. The inn has a genuine homely atmosphere. Flag stone floors, walls

in muted heritage colours, antique rugs and furniture, period paintings and prints all combine to create a relaxed and comfortable setting. Recently being recognised by the Publican Magazine's award for "Best Interior". The bar has an excellent stock of cask conditioned ales from award winning independent breweries and is combined with a superb cellar with more than 250 wines from around the world. While the surroundings and welcome are fantastic, the main feature and reason to go, is of course the food – chef/patron Steven Smith has created a unique menu that marries perfectly with the unique surroundings and atmosphere.

With his love of seasonal produce and attention to detail you will find it a challenge to find better

food anywhere in Lancashire. Steven's diverse menu offers something for every taste, such as chicken liver parfait with melba toast; king prawns with pork scratchings, sweet potato and apple tandoori roast butter to the more classic lemon sole, simply grilled with lemon and brown butter, hand cut chips and tartare sauce, hand dived scallops served with pork belly and scratchings, sweet potato and apple with a roasted tandoori, to name but a few of the tempting dishes on the menu. Why not finish off the meal with a beautifully crafted dessert like a treacle tart with raspberry and strawberry textures, or the stunningly sculptural lemon meringue, walnut ice cream and autumn berries or feast on a classic banana soufflé with sticky toffee ice cream.



No matter what your taste, you won't be disappointed. Sundays and the great British tradition of Sunday lunch is alive and kicking at the Freemasons and said by some to be the best in the area. So why not combine a great drive out to the charming Ribble Valley with the perfect dining experience, whether it's something quick off our salads and sarnies menu to the delights of the main menus.

If you want to plan your trip then take a look at the website where you will find all the info you need.

Freemasons Country Inn  
8 Vicarage Fold, Wiswell,  
Clitheroe, Lancashire BB7 9DF  
01254 822 218  
[www.freemasonscountryinn.com](http://www.freemasonscountryinn.com)



was the first European car to be manufactured with a power-operated hood. The DBS, launched in 1967, was the biggest advance in GT styling and design since the DB4. Introduced with the 4.0-litre, six-cylinder engine, it later evolved into the DBSV8 when Tadek Marek's 5.3-litre V8 engine went into production..

In 1971 the David Brown Corporation put Aston Martin Lagonda up for sale and, the following February, Company Developments, a Birmingham-based group of businessmen, took control. Sir David Brown became President of the company, while William Willson became the new Chairman. Production of the DBS and DBSV8 continued until 1972 when modified versions of the cars appeared. These were re-named the Aston Martin Vantage and Aston Martin V8 – neither car bearing the familiar DB prefix.

In 1974 Company Developments was forced to put Aston Martin Lagonda into receivership and at the

end of that year production was halted while a buyer was sought. In June 1975 possession was secured by North American Peter Sprague and Canadian George Minden, shortly to be joined by Englishmen Alan Curtis and Denis Flather. Immediate plans were put in hand to revitalise the company and a direct result of this was the appearance of a totally new Lagonda at the London Motor Show in 1976. With coachwork by William Towns, its strikingly modern appearance and very advanced specification made a considerable impact.

The following year saw the introduction of a very high performance version of the V8, called the Aston Martin V8 Vantage. In June 1978 a convertible version of the standard V8 was introduced and again called the Volante. Early in 1981 Aston Martin Lagonda changed hands, when Pace Petroleum – a private petroleum company led by Victor Gauntlett – and CH Industrials, a public company chaired by Tim Hearley, took control. In 1983 Automotive Investments – distributor of





## Specialist Motoring Solicitors

Oliver & Co is a leading North West Law Firm with over 40 years experience and expertise in providing a wide range of legal services to individual and business clients. Based in Chester we are delighted to support Stratstone Of Wilmslow Aston Martin.

All our Solicitors specialize in their particular area of expertise so that whatever the nature of your legal problem we can provide expert advice. Our clients are important to us and we strive to consistently provide a high level of service to them all.

At Oliver & Co we are always looking to improve and to fine tune our level of performance. We do this by listening to our clients, understanding their needs and by providing a first class service.

With over 25 years combined experience, our Motoring Prosecution Team advises and defends motorists facing the loss of their Licence or the imposition of Penalty Points.

Covering all Courts in England & Wales our Team can advise you on all aspects of this area of the Law and help avoid you being disqualified as well as keeping Points and Fines to a minimum.

So, if you are looking for quality advice from first class Solicitors, contact Oliver & Co.

For a free consultation with us please call us now on **01244 312306**. Our Staff are available by telephone between 8.45am - 5.15pm, or if you prefer, you can contact us by e-mail **law@oliverandco.co.uk** or fax **01244 350261**

**01244 312306**  
**www.oliverandco.co.uk**

**Oliver & Co**  
**Booth Mansion**  
**30 Watergate Street**  
**Chester**  
**CH1 2LA**



Aston Martin and Lagonda cars in the United States – purchased 100 per cent of the company, which it retained until October 1984, when the family of Peter Livanos took 75 per cent and Victor Gauntlett took 25 per cent.

Aston Martin Lagonda continued strengthening sales of the V8, V8 Vantage and Lagonda until they were joined by the 300 km/h Vantage Zagato in March 1986. A convertible version followed 12 months later.

In September 1987 it was announced that Ford was to purchase 75 per cent of the shares; the remaining 25 per cent were owned equally by the Livanos family and Victor Gauntlett, who was to remain as Executive Chairman and Chief Executive. In October 1988, the Virage was introduced at the British Motor Show. Designed to take the company into the 21st century, it replaced the Aston Martin V8, which had been in production for 20 years. A new Group C racing team

was formed to compete in the 1989 World Sports Car Championship. Its final placing was a most creditable eighth position. In September 1991, long-serving Executive Chairman Victor Gauntlett resigned and was replaced by Walter Hayes CBE, a former Vice-Chairman of Ford of Europe.

At the 1993 Geneva Show, Aston Martin announced the return of a DB model to its range for the first time in more than 20 years. The Aston Martin DB7 was named 'Car of the Show'. In February 1994, Walter Hayes CBE retired as Executive Chairman of Aston Martin and was succeeded by John Oldfield. On his retirement, Walter Hayes was named an Honorary Life President in succession to Sir David Brown who had died in September 1993.

During the summer of 1994 Ford acquired 100 per cent of the share capital and, to accommodate the DB7, a specialist paint and assembly plant at Bloxham





Luxurious interiors with attention to detail

# Wilkinson Beven Design

Prestigious residential and commercial projects for discerning clients, UK and worldwide.

Ski Chalets • Caribbean Villas • Swimming Pools • Town and Country Residences  
Spatial Planning • Lighting Design • Furniture & Fabric Specification • Design Management



MEMBER

+44 (0) 121 744 1458  
www.wilkinsonbevendesign.com



in Oxfordshire was purchased. An all-time production and sales record was established in 1995 when Aston Martin Lagonda produced more than 700 new cars in a single year. Although the DB7 accounted for most of these sales, a series of powerful – often supercharged – V8 models were still being produced at Newport Pagnell. David Price succeeded John Oldfield as Executive Chairman in October 1995.

The world debut of the DB7 Volante at the Detroit and Los Angeles International Auto Shows in January 1996 signalled the marque's return to the North American market. In December Bob Dover joined Aston Martin Lagonda as Chairman and Chief Executive. The success of Aston Martin in overseas markets was formally recognised with a Queen's Award for Export Achievement.

In July 1998 Ken Giles was named as Managing Director. Major product introductions in 1999 included

the launch of the first ever 12-cylinder Aston Martins, the DB7 Vantage and DB7 Vantage Volante.

In July 2000 Dr. Ulrich Bez joined the company as Chief Executive. Early the next year the V12 Vanquish was unveiled at the Geneva Motor Show and production started soon afterwards at the revitalised Newport Pagnell factory. Two years later the DB9 was unveiled at the Frankfurt Motor Show – it was to be produced at an all-new, purpose-built factory at Gaydon in Warwickshire, which was also to replace Newport Pagnell as the company's new headquarters. Gaydon spawned a second model with the introduction of the smaller V8 Vantage in 2005. In the same year, competition prepared DBR9s heralded Aston Martin's return to top class GT racing. The new race car took top GT1 honours on its debut at the 12 Hours of Sebring and two years later achieved similar success at Le Mans.

Indeed, 2007 was a hugely significant year for Aston Martin. The prestigious sports car manufacturer was



# *and service* Performance to make you tingle



If you're looking for performance tyres for your performance car, stop reading and start dialling!

We stock all the top performance tyres and have the know-how to fit, balance and align them, to deliver the best possible handling for the best possible drive.

Performance doesn't come much better!



**01925 247560**

1a Station Road, Latchford  
Warrington, Cheshire WA4 1JT



**01625 523669**

23 & 52 Knutsford Road  
Wilmslow, Cheshire SK9 6JB

**[www.protyre.co.uk](http://www.protyre.co.uk)**



purchased by a private consortium comprised of David Richards, Investment Dar and Adeem Investment, ending almost 20 years as part of Ford Motor Company. In June, to the delight of record crowds, the marque secured an eagerly awaited victory at the Le Mans 24-hour race with the DBR9 triumphing in a fiercely competitive GT1 class. The final Vanquish S rolled off the production line at Newport Pagnell in July, concluding over 50 years of Aston Martin production on the site. In August, the DBS, Aston Martin's ultimate luxury sports car, was unveiled at the Pebble Beach Concours d'Elégance. The year culminated with the opening of the first purpose built Aston Martin Design Studio, helping to secure cutting edge designs long into the future.

In 2008 the company introduced updated versions of the DB9 and V8 Vantage – already established as amongst the most successful Aston Martins of all time. The DBS wowed audiences around the world with second successive appearance as James Bond's car of choice in the 22nd 007 film, Quantum of Solace, following a starring role in Casino Royale in 2006. The company also revealed an early snapshot of the stunning One-77 – the ultimate artistic interpretation of the marque which fuses advanced technology with beautiful Aston Martin design. In 2009, exciting plans for the Aston Martin brand continue as the company prepares to unveil a number of further new models – V12 Vantage, DBS Volante and Rapide - and, in its centenary year, revive the legendary Lagonda brand.



# amberLOUNGE

## KNUTSFORD



STYLE, CLASS & SOPHISTICATION

AMBER LOUNGE KNUTSFORD IS THE CONNOISSEURS CHOICE  
AVAILABLE FOR PRIVATE FUNCTIONS & CORPORATE EVENTS  
OPEN UNTIL 2AM EVERY THURSDAY, FRIDAY & SATURDAY



AMBER LOUNGE  
2 MALT STREET  
KNUTSFORD  
WA16 6ES

01565 653 121

KNUTSFORD@AMBERLOUNGE.COM

LIFE WITH STYLE...



## The Collection

A distinguished heritage, coupled with exceptional design, craftsmanship and quality, has made Aston Martin what it is today: a globally recognised name with a reputation for understated style and elegance.

Inspired by the same commitment to elegance and style that characterises every Aston Martin, the collection is an exclusive range of fashion accessories and luxury goods that encompasses the essence of the marque.







## amberlounge KNUTSFORD

The town of Knutsford is synonymous with all things chic, and there's good reason for that. Amongst the uber stylish hair salons and top quality restaurants sits a dark horse. Down a modest path stands the effortlessly cool Amber Lounge, where once through the glass doors you will realise why everybody is talking about it. High-concept and upscale, it has broken away from it's rivals by offering a new and exciting social experience which is delivered by a passionate and highly skilled team. On hand, they will ensure your visit is the truly memorable and magical night we all desire.

The company's Head Mixologist is based at Knutsford, and there are always new and exciting creations afoot. With homemade Bramley apple liqueur, Earl Grey tea Liqueur and Belgian chocolate & raisin infused Jack Daniel's amongst the current limited edition concoctions available, every visit offers a new experience. Cocktails such as the inspiring Lemon Meringue Pie, which is served with a real pie-crust rim and toasted meringue on top are what makes this a must visit night-spot.

As for entertainment, the resident DJ's play the smoothest tunes every Thursday, Friday & Saturday until 2am – why not wrap up your weekend with the Sunday Night Socialites? Doors open at 6pm and carry on until late, with a relaxed dress code, funky beats, experimental cocktails and the infamous 50% off drinks when you present a Sunday Night Socialites card (available at the bar). In their own words, this really is Life with Style.

“It cannot be overlooked,  
the wine that complements your meal  
is crucial to the whole  
dining experience”



**Originale Cucina Italiana**

**Tel: 0161 834 6226**

**40 - 42 Kings Street West,  
Manchester, M3 2WY**

**www.sancarlo.co.uk**

**manchester@sancarlo.co.uk**

Marcello Distefano  
Managing Director

London **Manchester** Birmingham Bristol Leeds  
Leicester Liverpool Milan Rome Kuwait

## CASINO ROYALE 7



The first Aston Martin to appear in a Bond film was a DB5 used in 'Goldfinger' in 1964

Quantum of Solace marks the 10th appearance of an Aston Martin in a James Bond film

Newport Pagnell (Aston Martin's Head Office at the time) paint shop was used in Diamonds are Forever

## ASTON MARTINS FEATURED IN JAMES BOND FILMS

Goldfinger	1964	DB5	Silver Birch	Bond drives
Thunderball	1965	DB5	Silver Birch	Bond drives
On Her Majesty's Secret Service	1969	DBS	Green (olive)	Bond drives
Diamonds Are Forever	1971	DBS	Green (olive)	Stationary in Q's workshop
The Living Daylights	1987	V8 Volante	Gun Metal Silver	Bond drives
Goldeneye	1995	DB5	Silver Birch	Bond drives
Tomorrow Never Dies	1997	DB5	Silver Birch	Bond drives
Die Another Day	2002	Vanquish	Gun Metal Silver	Bond drives
Casino Royale	2006	DBS	Casino Royale	Bond drives
Quantum Of Solace	2008	DBS	Quantum Silver	Bond drives







**Doors | Windows | Orangeries | Conservatories | Decking**

Quality isn't Expensive...  
...It's Priceless

GROSVENOR WINDOWS LTD



Orangeries like no other

Lodge Bank Estate, Crown Lane, Horwich, Bolton BL6 5HY  
Tel: 01204 664488  
Also Show Centre at Bents Garden & Home, Culcheth, WA3 5NT

[www.grosvenorwindows.co.uk](http://www.grosvenorwindows.co.uk)







# Welcome to the Peak District's *finest* hotel & spa...

It's official, the Peak Districts finest is now a four star hotel. Set in the heart of the Peak District National Park, Losehill House Hotel & Spa is awarded 4 stars by the AA for its quality and hospitality.

The Hotel occupies a secluded spot on the side of Lose Hill with stunning views overlooking Win Hill. Drive along a little lane near Hope, equidistant from the wonderful villages of Castleton and Edale and join us in the midst of some of the best walking and outdoor activity countryside in Derbyshire.

Just sit back and enjoy the view across the valley with afternoon tea on the terrace, or a glass of something cool while you relax in our outdoor hot tub or indulge in a Spa treatment just for you.

Unwind and enjoy lunch or dinner in our award winning Orangery Restaurant, ideal for that special occasion or take a gentle drive through the Edale Valley and admire some of the best scenery the Peak District has to offer.

And why not call in for one of the best Sunday lunches in the area or just a drink or two and admire that view.

Check out [www.losehillhouse.co.uk](http://www.losehillhouse.co.uk) or contact us on 01433 621 219 for our midweek rates and special offers or spa breaks and enjoy the very best of the Peak District for yourself - hill top to hot tub!



**LOSEHILL HOUSE**  
HOTEL & SPA

Lose Hill Lane Hope Derbyshire S33 6AF T. 01433 621 219 [www.losehillhouse.co.uk](http://www.losehillhouse.co.uk)



RESTAURANT SPA & POOL LUXURY ROOMS WEDDINGS CONFERENCES & EVENTS



ASTON MARTIN DESIGN STUDIO



# Hobs<sup>AND</sup>Hotplates

OF SHREWSBURY



*Quality and Style at Affordable Prices*



Hobs & Hotplates are a family run business and have been designing and installing kitchens, bedrooms and home studies for over 15 years, with cost effective solutions to suit all budgets.

UNIT C1, GREENWOOD COURT,  
HARLESCOTT INDUSTRIAL ESTATE,  
SHREWSBURY, SHROPSHIRE. SY1 3TB

OPEN  
MONDAY-FRIDAY 10am-6pm  
SATURDAY 10am-5pm

t: 01743 462205

[www.hobsandhotplates.co.uk](http://www.hobsandhotplates.co.uk)



## ASTON MARTIN DESIGN STUDIO

Aston Martin's design studio cements the company's reputation as one of the world's most technologically sophisticated sports car manufacturers. Design is one of Aston Martin's core values, and the Studio, located in a world class building adjacent to Aston Martin's manufacturing and engineering centre at Gaydon in Warwickshire, integrates the process into the heart of the company. "Aston Martin is about design and it is about beauty," says Aston Martin's Chief Executive Officer, Dr Ulrich Bez, "yet until now it has never had its own design studio."

The elegant modern pavilion, designed by the Weedon Partnership in collaboration with Austrian pre-fabrication specialists Holzbau Saurer, has been

built using the latest construction technology and is a showcase for environmentally sustainable design. The architecture is modern and uncompromising, making extensive use of structural wood and large expanses of glass. The modular wooden structure has been sourced from managed forests in Austria and Switzerland. The studio has taken just six months to build and only twelve months to complete from its design conception to realisation.

Environmental technologies will ultimately include a 'green' sedum roof, helping the building integrate into the surrounding landscape as well as providing a high level of insulation. A closed loop vertical ground water system provides heating and cooling, a

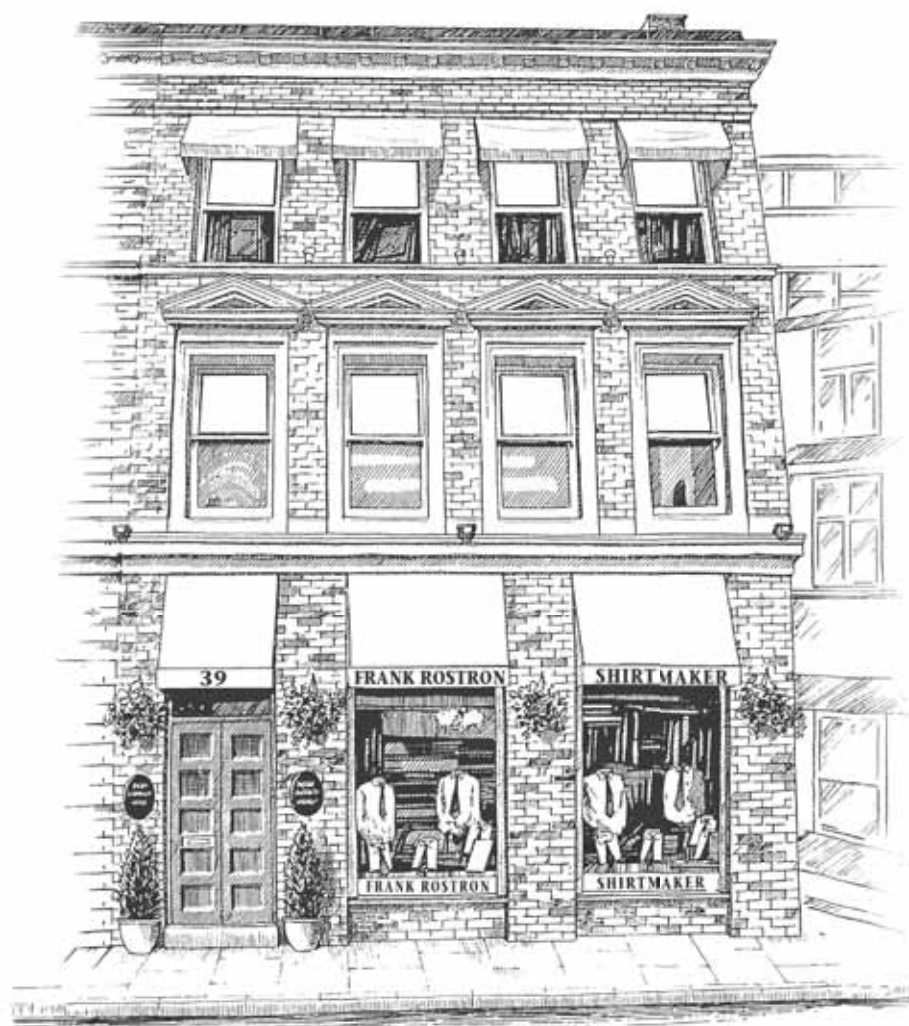
>>





## FRANK ROSTRON

BESPOKE SHIRTMAKERS AND TAILORS  
EST. 1968



For over 40 years Frank Rostron has offered the finest English Bespoke Shirts to discerning customers around the globe. In keeping with the Jermyn Street traditions, Frank Rostron Shirtmakers produces the finest English, hand-cut shirts, complimented with fine English Shoes, Italian and English silk ties, Made-to-Measure suits and Scottish Cashmere knitwear. In combination with our products we offer an unrivalled personal service to our customers worldwide.

### QUALITY GENTLEMEN'S OUTFITTERS

Manchester · London · New York

To make a personal appointment at the shop, at your home or at your office  
call us on 0161 236 5379, or call Adam Dooley on 07500 786 664

39 Princess Street, Manchester M2 4FN · 0161 236 5379 · [store@frankrostron.com](mailto:store@frankrostron.com)

[www.frankrostron.com](http://www.frankrostron.com)



## ASTON MARTIN DESIGN STUDIO

process that uses only one third of the energy of that used in conventional systems. All floors have underfloor heating and cooling using a low energy 'Gravivent' system. The main wooden structure is insulated to a high specification using natural hemp insulation.

Marek Reichman, Aston Martin's RCA-trained Director of Design since 2005 oversees a team including clay modellers, computer modellers, interiors specialists and craftspeople. Reichman describes the new building as "high-tech but human," adding that the materials give the interior warmth. "Wood shifts and moves with time and gains a patina."

The fine interior detailing has also been personally overseen by Reichman and his team. "You've got the

smells, colours and sensations of Aston Martin around you," he explains, pointing out the high quality woods, art work, stainless steel, travertine marble and designer work spaces. Everything contributes to an immersive sensory environment, mirroring the experience of the cars themselves. The public foyer has been designed to be used as both a gallery and a VIP area for launches and private viewings, complete with a Bang and Olufsen projection and speaker system.

The past decade has seen Aston Martin's engineering division grow from 30 people to 300. The Design Studio will provide a similar boost to the integration of the design process into the company. "In the past, the most wonderful cars came from Italian design houses," explains Dr Bez, "bodies were even made in Italy." >>



# North Valley Forge



*Anything else... is just a gate*

If you are serious about **quality** and having beautiful reliable electric gates that enhance the **look, security and value** of your property, then visit Europe's largest electric gate showroom at **North Valley Forge**.

Valley Forge Business Park, Reedyford Road,  
Nelson, Lancashire BB9 8TU [www.gatesiron.com](http://www.gatesiron.com)

01282 677300



## ASTON MARTIN DESIGN STUDIO

To bring these skills in house, with their own dedicated facility, places Aston Martin in a position of considerable strength. "Finally, we own design," says Dr Bez, explaining that "in order to build something that is beautifully designed, the key is to have the intelligence to do these things and not just have craft skills. You have to have them both. If we don't design it properly then we cannot build it." The design department ensures Aston Martin's celebrated craft skills have a place in an ultra-modern car. "Even though we have incredible craftsmanship skills, without design intelligence we cannot use those skills to their best advantage," says Bez.

The 2700\_m studio provides space for the design team, colour development work and a specialist trimmer.

One side of the new building is faced entirely in glass, braced with glass beams, to help maximize the feeling of transparency, flooding the studio floor with natural light. Flush light fittings provide hidden ambient light, supplemented and enhanced by the customised and highly adjustable lighting rigs used to develop the clay surfaces. "A studio has to have the ability to allow you to view the cars from all angles," Reichman says, "so the building design takes this into account." There are also five full-size 'plates' on the studio floor for the creation of full-scale models, along with a viewing garden, screened from the rest of the facility by a hand laid stone wall, landscaping.

>>





## Badgers Retreat TUNSTALL

Nestled within a secluded valley at the edge of the Yorkshire Dales this exclusive over 50's holiday park is surrounded by natural beauty and wildlife in picture perfect surroundings.



### HOW TO FIND US

**FROM THE SOUTH:**  
Leave the A1 North-bound at Catterick / Richmond junction (A6136), at the "T" junction turn left following signs to Tunstall. Go through Tunstall and then turn right to Hipswell. Follow for half a mile the park entrance on the left.

**FROM THE NORTH:**  
Leave A1 south-bound at the Catterick junction (A6136). Straight ahead at crossroads to the A6136. Go through Catterick village, after the Angel Pub turn right to Tunstall. Go through Tunstall and then turn right to Hipswell. Follow for half a mile the park entrance on the left.

## Bockenfield COUNTRY PARK NR. MORPETH

Discover our latest holiday lodge retreat set amongst 26 acres of flourishing and peaceful woodland. Close to the world famous Alnwick Castle and the Northumbrian coast you will never run out of exciting things to see and do.



### HOW TO FIND US

**FROM THE SOUTH:**  
9 miles north of Morpeth watch for the sign for 'Bockenfield'. Turn right into the lay-by and then immediately right again into the park after only 20 metres.

**FROM THE NORTH:**  
9 miles south of Alnwick watch for the sign for 'Bockenfield'. Turn left into the lay-by and follow it almost to the end. Turn left again, into the park.



## ASTON MARTIN DESIGN STUDIO

"The new Design Studio is a commitment from the new shareholders of how important the design of new models is to the company's future," says Dr Bez, "It also demonstrates the pace at which the company is capable of moving and brings one of our core competencies to Gaydon for the first time. From conception to realisation in just twelve months is a fantastic achievement by everyone involved."

The Gaydon factory manufactures the recently unveiled flagship DBS, V8 Vantage, V8 Vantage Roadster, DB9 and DB9 Volante models. Aston Martin has become synonymous with design excellence, and the creation of the new design studio will provide a fitting environment for the development of the next generation of production cars. The company was recently voted the Coolest Brand for an unprecedented second year running.

# SPECIAL SUMMER OFFER UPTO 30% DISCOUNT

WHEN YOU BUY ANY LODGE OR HOLIDAY HOME BEFORE 30<sup>TH</sup> SEPTEMBER 2010

**PART EXCHANGE AVAILABLE ON TOURERS,  
CAMPER VANS & STATICS - TOP ALLOWANCES\***

  
**Welchs Homes**

\*FOR FURTHER INFORMATION  
CALL 01524 811357  
[WWW.CWELCHSHOMES.COM](http://WWW.CWELCHSHOMES.COM)







A Fine Savonnerie Super rug from China.

Ref: SAV320



This is a Royal Yelmi rug from China.

Ref: CWS275

GH FRITH  
Rugs that  
bring you

BEAUTY

GH Frith have the  
largest stock of  
Hand Made rugs  
and carpets in  
the UK, with over  
**20,000** on display



Hand knotted Indo Ziegler rug from India.

Ref: IZV070



A beautiful Tibetan designer rug.

Ref: CTNF18



Kaydon House, Kinmel Park, Bodelwyddan, Denbighshire, **North Wales**, LL18 5TY  
Ridings Park, Eastern Way, Hawks Green, Cannock, **Staffordshire**, WS11 7FJ  
Euroway, Frankland Road, Blagrove, Swindon, **Wiltshire**, SN5 8YW  
Free parking, Free delivery, Full bespoke service, Specialist repair & cleaning service

**SAT NAV: LL18 5TZ**  
**SAT NAV: WS11 7FJ**  
**SAT NAV: SN5 8UD**  
**OPEN 7 DAYS A WEEK**

Call 0845 4 900 600 or visit our interactive website at [www.ghfrith.com](http://www.ghfrith.com) to view our extensive ranges





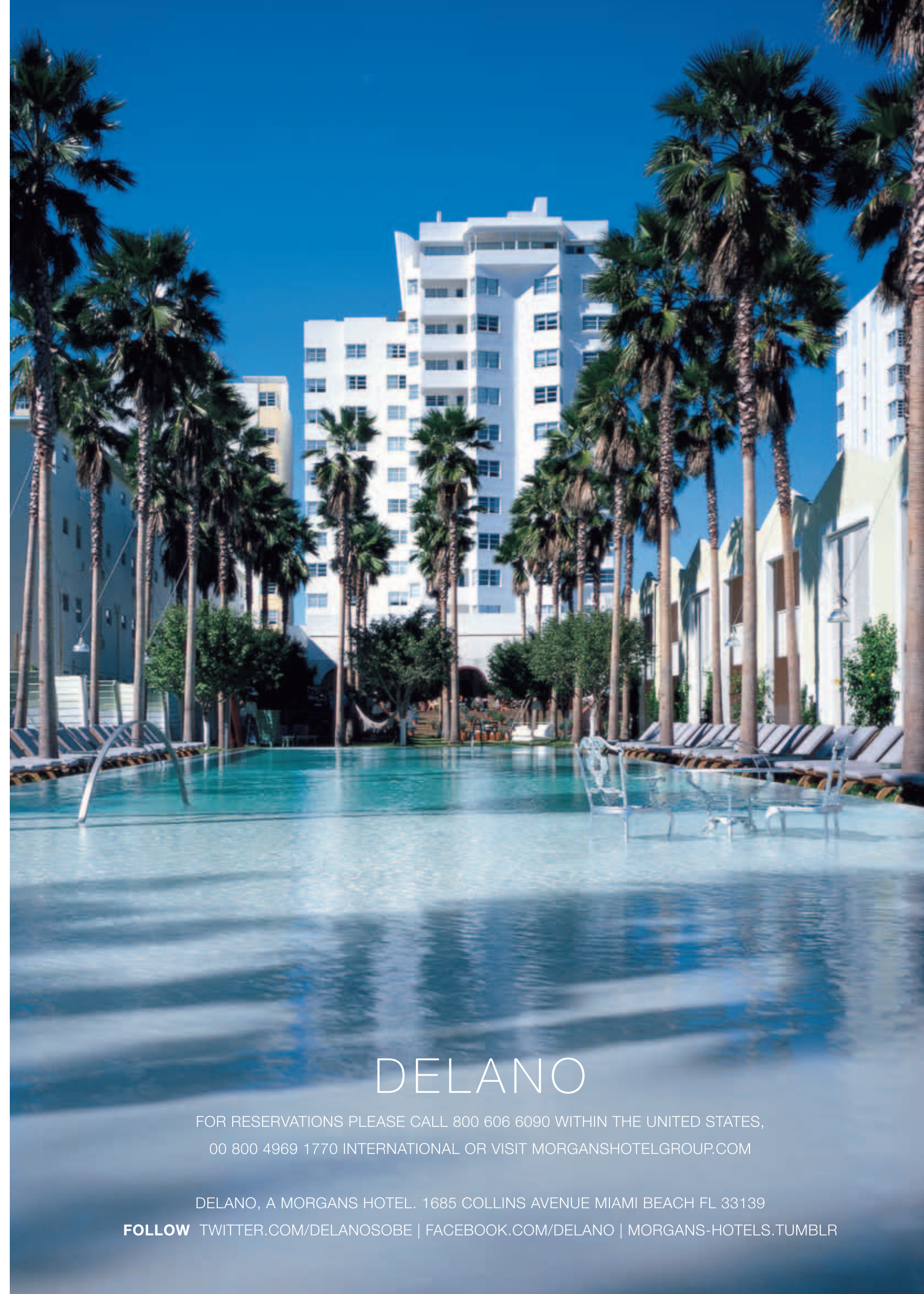
**Dobège**  
*Photography*



*"Love is in the details"*

[www.dobegephotography.com](http://www.dobegephotography.com)  
0161 485 7927

Portraits . Commercial . Weddings



DELANO

FOR RESERVATIONS PLEASE CALL 800 606 6090 WITHIN THE UNITED STATES,  
00 800 4969 1770 INTERNATIONAL OR VISIT [MORGANSHOTELGROUP.COM](http://MORGANSHOTELGROUP.COM)

DELANO, A MORGANS HOTEL. 1685 COLLINS AVENUE MIAMI BEACH FL 33139

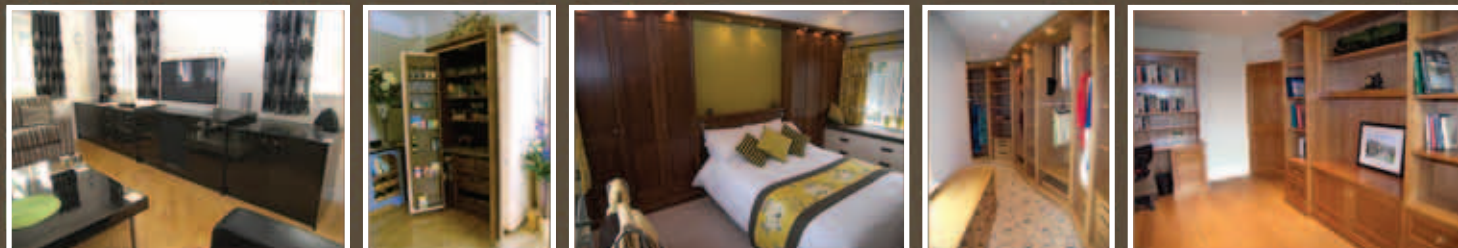
**FOLLOW** [TWITTER.COM/DELANOSOB](https://twitter.com/DELANOSOB) | [FACEBOOK.COM/DELANO](https://facebook.com/DELANO) | [MORGANS-HOTELS.TUMBLR](https://morgans-hotels.tumblr.com)



Timeless furniture designs in hand painted or natural wood finishes, tailored precisely for you and your home.



Please call **0161 620 4123** for our portfolio or visit our website to view more of our creations  
**[www.matthewjamesfurniture.co.uk](http://www.matthewjamesfurniture.co.uk)**



pantry cabinets • bedrooms • dressing rooms • lounge furniture • home study

**1 BROOKLANDS PARADE GROTON SADDLEWORTH OL4 4LA**  
Email: [info@matthewjamesfurniture.co.uk](mailto:info@matthewjamesfurniture.co.uk)



## Aston Martin DB9: The Definitive Sports Grand Tourer

In the most significant programme of upgrades since its world debut in 2003, Aston Martin's DB9 range has received a complete package of styling, engineering and equipment enhancements.

As the most successful Aston Martin of all-time (an honour it shares with the V8 Vantage) the DB9 has established itself as the definitive grand tourer, thanks to an enduring combination of understated elegance, sporting character and genuine luxury.

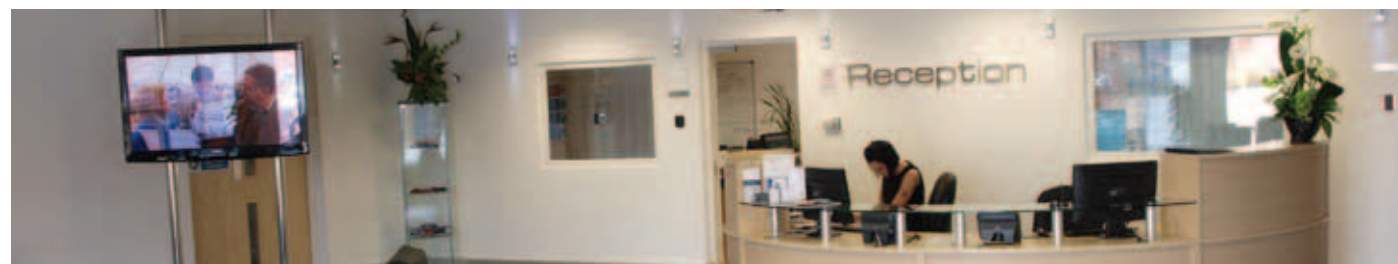
For Dr Ulrich Bez, Aston Martin's Chief Executive, the DB9 remains a very special car: "The DB9 is the quintessential sporting grand tourer and offers

an unrivalled combination of driver involvement, character, luxury and refinement. This car combines our unique Aston Martin character with an uncompromised design philosophy, craftsmanship and trademark Aston Martin performance ability."

This new package of improvements compliments these core qualities perfectly. Subtle styling changes freshen the DB9's appearance, with a new front bumper, bright finish radiator grille and a re-shaped lower intake featuring bright hexagonal mesh. New headlight bezels, re-styled sills, silver brake calipers, 20-spoke diamond turned alloy wheels and clear rear light lenses complete the external revisions.

>>





# Car Cosmetics Accident Repair Centre

Car cosmetics (Manchester limited) is a prestige accident repair centre based in the heart of trafford park. Established in 17 years, we have recently invested £3million in our new state of the art repair centre.

## We cover the whole of the VW GROUP

VW  
AUDI  
SEAT  
SKODA  
VW COMMERCIAL VEHICLE  
AUDI / VW ALUMINIUM (R8, A8, TT, A2)  
MERCEDES-BENZ  
SMART

The repair centre has a 28-bay workshop and is equipped with the latest technology to enable our manufacturer trained technicians to repair prestige vehicles to the highest level and standards.

## What we do:

### Full accident management

(liasing with your insurer and arrange repairs)

### Full repair process (all work carried out in house) including full diagnostics

4 wheel geometry

Air conditioning

Air bag re-setting

Wheel refurbishment  
(including diamond cut finish)

24-hour recovery (all vehicles recovered and delivered via trnsport)

Secure indoor storage

Courtesy cars

Valets

Smart repairs

Glass repairs and replacement

On-site estimating

Company fleet management programme

As a VW GROUP and MERCEDES-BENZ repair facility all repairs are covered and maintain the manufacturers warranty.

Why not give Rachael Gaskell, our customer services manager, a call on **0161 872 5335** and arrange a tour of the facility? This will give you an insight into how a prestigious centre repairs high class vehicles.

Our credentials can be viewed on both the manufacturer websites by following the links:

[www.vwgrouppaintandbdy.co.uk](http://www.vwgrouppaintandbdy.co.uk)

Dealer no 50233

[www.mercedes-benzcrf.com](http://www.mercedes-benzcrf.com)

Certificate No MB 121

**Car Cosmetics. Unit 3 Monde trading Estate  
Off westinghouse Road.  
Trafford Park Manchester M17 1LP**

**Tel: 0161 872 5335 (5 lines)**

**Fax: 0161 872 5592**

**[www.carcosmeticsuk.co.uk](http://www.carcosmeticsuk.co.uk)**



Under the skin the DB9's passive damping system has been replaced by a new Adaptive Damping System (ADS), which offers enhanced ride comfort together with sharper handling when switched to Sport mode. The ADS system is offered as standard equipment across the DB9 range, encompassing both Coupe and Volante (convertible). A new tyre pressure monitoring system, a revised Bluetooth microphone system and the addition of a new Double Apex alloy finish trim and Bang & Olufsen hi-fi options broaden the DB9's specification.

Aston Martin's Product Development Director, Ian Minards, explains that it is all part of an ongoing commitment to continual improvement: "The DB9 was the first car built at Gaydon adopting the VH architecture.

It has evolved every year since, with significant changes including a power upgrade and successive reductions in CO2 emissions. The latest package of improvements goes further than ever, highlighting the DB9's qualities as a true sporting GT and underlining its role as the backbone car of our range."

The Aston Martin DB9 is available as either Coupe or Volante (convertible) with rear mid-mounted six-speed manual gearbox as standard or optional 'Touchtronic 2' six-speed automatic transmission.

Production of the revised DB9 is already underway. Prices start from £122,445 for the DB9 Coupe and £131,445 for the DB9 Volante.





SRB Design And Construction \* Award Winner \* Best Workmanship

Lymewood Architectural Joinery designs and manufactures a unique range of timber products to suit individual projects. Working on both commercial and private properties all products designed and manufactured by Lymewood will complement the style of the property and add character.

## Product Range

The executive product range by Lymewood Architectural Joinery includes:  
Windows • Doors • Conservatories • Sun Houses • Gates  
Swimming Pool Surrounds • Flooring • Profiled Mouldings

## Bespoke Design

With a portfolio of designs and extensive product range Lymewood works with the clients to choose the product style and finish appropriate for the property. If there is a design you have in mind Lymewood will offer guidance and turn the ideas into a functional timber product to complement the property. Products available from Lymewood are like no others available on the market; the profiling and design features enables them to stand out from the rest.

## Highest Quality and Style

Products are designed and manufactured with quality and style in mind. The materials used are to the highest specification to ensure the end product is exceptional. All products are complete with a high specification of timber, glass, spray finish and ironmongery. Clients have a vast range of options available to them when deciding upon the type of hardwood for the joinery to be manufactured in; the glazing range to be installed into the products, the colour or colours of the spray finish and the style of ironmongery.

## Products For All Properties

Over the years Lymewood Architectural Joinery has worked on a range of projects including new builds, renovations, barn conversions, town houses, country mansions and commercial properties. A vast portfolio is available to look at on request.

## Contact Lymewood Architectural Joinery

If you have a project in mind please contact Roger Lymer who will be able to discuss your ideas and requirements and make them a reality in specialist hardwoods.

For more information please contact Roger Lymer at Lymewood Architectural Joinery on **01538 360348**, alternatively visit [www.lymewood.com](http://www.lymewood.com).



## Lagonda

Aston Martin is proud to announce the return of Lagonda, one of the most iconic names in luxury car manufacturing. The intention is for Lagonda to enter the market place with a unique performance luxury product, a vehicle that combines exceptional ability with unsurpassed elegance, inside and out.



owner. The concept demonstrates a commitment to innovative new propulsion technologies, new materials and elegant forms.

“The Lagonda is the luxury car of the future,” says Aston Martin Chief Executive, Dr Ulrich Bez, “a combination of total usability, a new form and innovative new technology

and materials.”  
Lagonda’s return signals a major expansion of Aston Martin’s product line, taking the company into new and emerging markets around the world. To demonstrate the Lagonda vision, the LAGONDA CONCEPT has been created, a car that epitomises the intersection of craft, design and technology with Aston Martin’s established high performance expertise.

The LAGONDA CONCEPT is an avant-garde luxury vehicle; with powerful four-wheel drive, a four-seater car that will satisfy the most discerning and demanding

The return of Lagonda fulfils a long-term vision. Aston Martin’s modern era began in 2001 with the launch of the V12 Vanquish and the construction of the award-winning headquarters at Gaydon, Warwickshire in 2003. In the years that followed, Aston Martin has launched four class-leading new products, revitalising the performance GT category and redefining automotive beauty.

>>





At Corinthian we design fine quality kitchens and furniture to the unique specifications of each individual client, using only the best materials. Our team of experienced cabinet makers design and build each piece of furniture on site in our workshop. The same team of craftsmen go on to hand-paint and fit every kitchen, ensuring unparalleled standards of service and the highest quality finish.

Corinthian was founded in 1994 under the name of Jermy, Goodwin and Co. developing into the leading contemporary and traditional cabinet makers and specialists in the care, conservation and restoration of antique furniture in the North West, before making a move into the design and build of high quality kitchens.

Email: [info@corinthianfurniture.co.uk](mailto:info@corinthianfurniture.co.uk)  
[www.corinthianfurniture.co.uk](http://www.corinthianfurniture.co.uk)

## DEFINITIVE<sup>1</sup>

Interior Design | Furniture Design | Project Management



Definitives design practice has over 15 years experience working in the domestic and commercial markets. Definitives unique blend of practical and creative skills has enabled them to work successfully with architects, contractors and most importantly fulfill the clients aspirations.

Tel: 0151 734 3555 | E-mail: [info@definitive.co.uk](mailto:info@definitive.co.uk) | [www.definitive.com](http://www.definitive.com)



Aston Martin's award-winning range, the DBS, DB9, Vantage and forthcoming Rapide and One-77, represent some of the most beautiful high performance cars ever built, refined, highly crafted and extremely well-engineered. An Aston Martin will always be a sports car; modern, exclusive and beautiful, it demands to be driven, with an exceptional character that rewards the enthusiast, both on the road and on the track. Above all, an Aston Martin creates an emotional response. It is a machine with soul.



history, Lagonda will return to Russia, enter emerging markets in the Middle East, South America, India and China, as well as responding to demand from the dynamic, innovation-focused consumers of Europe, North America and the Far East.

Under the leadership of Dr Ulrich Bez, Lagonda will bring performance luxury into new markets and territories around the world. Reflecting its remarkable

Not only will Lagonda join Aston Martin in existing core markets, but the unique character of the new brand will help take the company into as many as 100 territories around the world and extend the brand to new customers. "An Aston Martin is an authentic, pure sports car," says Dr Ulrich Bez, "but Lagonda is something else, a new brand that will reach into new markets and have different values to Aston Martin."







## Always Serving Glorious Food



Golden Goose Events is the driving force behind some of the most talked about and high profile events.

We create wonderful food using the best, freshest and seasonal ingredients. Preparing and presenting indulgent flavours, amazing tastes with style, inspired by world food trends also sourcing ingredients from around the global market place.

Infamous for our canapés “Indulgence in Miniature”, these may only be the beginning of an explosion of flavour on your palette. Our commitment to you is providing a personal service to create the perfect occasion. We can also provide a Butler service who will take responsibility for the chilling of all the wines, the bar & champagne reception and anything else to do with the wet side of the event.



Golden Goose Events Ltd., Highway Farm, Peplow, Shropshire, TF9 3JU  
Tel/Fax: 01952 541219 email: [info@golden-goose-events.co.uk](mailto:info@golden-goose-events.co.uk)  
web: [www.golden-goose-events.co.uk](http://www.golden-goose-events.co.uk)





## The One-77

The One-77 is Aston Martin's definitive sports car, one that epitomises everything Aston Martin from technology, the hand-craftsmanship of the hand rolled aluminium panels to the attention to detail. A culmination of all the marque's know-how, the One-77 delivers effortless beauty guaranteed to stir the senses with performance potential eclipsing any previous Aston Martin.

For Aston Martin's Chief Executive, Dr Ulrich Bez, revealing the One-77's secrets is a proud moment: "Right from the very beginning of the project the vision for One-77 was very simple: It had to combine high-technology with hand-built craftsmanship, and demonstrate the unique capabilities and passion of our designers, engineers and technical partners.

>>



EXECUTIVE TRAVEL CHAUFFEUR DRIVEN



LONG WHEELBASE MERCEDES S-CLASS

THEATRE TRIPS  
SPORTING EVENTS  
AIRPORT TRANSFERS  
SHOPPING TRIPS  
CRUISE TRANSFERS  
BUSINESS TRAVEL  
ANNIVERSARIES

WEDDINGS  
PROM NIGHTS  
GOLF DAYS  
THE RACES  
SIGHTSEEING TOURS  
CONCERT NIGHTS  
BIRTHDAY TREATS

FOR MORE DETAILS, OR TO MAKE A BOOKING:

FREEPHONE: 0808 192 4080

WWW.WORLDSAPARTCHAUFFEURHIRE.CO.UK

'EXCELLENCE AS STANDARD'



"Quite simply it had to be the ultimate expression of Aston Martin. As you can now see, we have achieved that goal in magnificent style."

Chris Porritt, One-77 Programme Manager continued: "We wanted to create something that wows you as much when you see what's under the skin as the exterior styling itself. We started by identifying the most technologically exciting front-engined, rear-wheel drive cars in the world: those from the DTM race series. We then applied the principles and technology that feature heavily in their design and translated it to a road car application."

Consequently the One-77's structural core is a lightweight and immensely rigid carbon fibre monocoque. Conceived and designed at Aston Martin's Gaydon HQ, the monocoque, or 'tub', has been built in partnership with Multimatic (MTC).

As world leaders in carbon composite technology, advanced vehicle analysis and dynamic simulation, MTC brings unrivalled specialist capabilities to the exacting challenge of the One-77 programme.

Employing the classic formula of double wishbones at each corner, the One-77 features inboard suspension front and rear, with pushrods employed to transfer vertical suspension movements to the horizontally mounted spring/damper units. A practice taken directly from racing car design, the main advantages of inboard suspension are a reduction in unsprung weight and the ability to package the suspension components more effectively.

The dampers are fully adjustable and feature advanced Dynamic Suspension Spool Valve (DSSV) technology; a world-first for a road car application. These special valves are state-of-the-art even at the highest levels of motorsport, >>



 **ALDERLEY EDGE**  
SCHOOL *for* GIRLS

From 3 to 18 years

Registered Charity No. 1006726



### Key Dates 2010

**Wednesday 6 October 2010**

Senior School Open Evening, 7.00pm - 8.30pm

**Saturday 6 November 2010**

Whole School Open Day, 10.00am - 12.00 noon

**Thursday 30 September 2010**

Sixth Form Information Evening, 6.00pm - 8.45pm

### Key Dates 2011

**Wednesday 12 January 2011**

11+ Entrance Examination

**Saturday 19 March 2011**

Junior School Open Day, 10.00am - 12.00 noon

To book your place or for more information about our school and our forthcoming events, please contact:  
Julie Bedigan, School Registrar on 01625 583028 | [www.aesg.co.uk](http://www.aesg.co.uk)  
Alderley Edge School for Girls, Wilmslow Road, Alderley Edge, Cheshire. SK9 7QE

**ALDERLEY girls have the EDGE**





# HOT STUFF

FIRES STOVES RANGES  
ESSE COOKING & HEATING CENTRE



ESSE



BELLFIRES



GAVIN SCOTT DESIGN



ESSE

**SUPPLIERS OF COAL & LOGS**  
 92 MARKET STREET, HOYLAK, WIRRAL CH47 3BD  
 TEL: 0151 632 1610 | FAX: 0161 632 5122  
 E-mail: sales@gavinscottdesign.com  
 www.gavinscottdesign.com



*From delicate fountains to idyllic lakes, Ponds Pools & Fountains, the water feature specialists provide a tailored service that offers bespoke designs, enhancing your home and adding to its beauty*

# PONDS POOLS & FOUNTAINS LIMITED

562 Huddersfield Road, Carrbrook, Stalybridge, Cheshire, SK15 3NP  
 Tel/Fax: 01457 839 839, Mobile: 07990 975 178, Email: sales@ppfountains.com  
 www.ppfountains.com



and use high-precision machined components to enable the shock-absorbing characteristics of the damper to be changed without having to remove them from the car, as is the norm.

Underlining the truly bespoke nature of the One-77, once delivered to its owner, the car's suspension characteristics will be precisely set-up by Aston Martin engineers to suit their exact requirements, from settings suitable for the ultimate long-distance GT, to a machine capable of conquering the Nürburgring Nordschleife.

While functionality and efficiency are paramount in the design and construction of the One-77', so too is aesthetic beauty.

To this end every single component has been crafted from the finest materials with absolute attention to detail.

From the mesmerising weave of the glossy carbon fibre tub and the abstract, sculptural beauty of the dry sump's oil reservoir, to the unerring precision of the

billet machined aluminium suspension mounts, the One-77's rolling chassis is an automotive masterpiece.

Of course the irony is that the vast majority of these exquisite components will be hidden from view in the finished car, yet each and every piece is a work of art in its own right. It's this extraordinary workmanship and money-no-object commitment to quality that makes the One-77 unique.

Naturally, such a spectacular chassis demands – and gets – an equally exceptional drivetrain. It comes in the form of an immensely potent 7.3-litre, naturally aspirated V12 engine.

Thanks to the adoption of a dry-sump oil system the engine is mounted 100mm lower than in any previous V12-engined Aston Martin road car, which helps keep the One-77's centre-of-gravity as low as possible. To further aid agility and endow the One-77 with progressive >>









**Stowe Family Law** is one of the UK's leading private client family law firms

*Marilyn Stowe has built the successful practice and wins excellent results for clients - Chambers Leading Lawyers 2010*


We specialise in family law issues including divorce, high value financial settlements including corporate and offshore assets, children's issues and legal advice for cohabiting couples.

Our expertise has recently been showcased in *The Financial Times*, *The Observer*, *The Times*, and *The Daily Telegraph*.

**Contact us to make an appointment**

The Camellia Building  
38 Oxford Road  
Hale, Altrincham  
WA14 2EB  
0161 926 1410


[www.stowefamilylaw.co.uk](http://www.stowefamilylaw.co.uk)  
Blog URL: [www.marilynstowe.co.uk](http://www.marilynstowe.co.uk).



**Amazing,** but if your car is up to 2 years old, most insurers won't give you a new one if it's written-off.

**We do.**

If your car is written-off or stolen, most insurers will only pay for a brand new car as long as it was under a year old. We do the same if your car is up to 2 years old, even if you haven't owned it from new. It might seem amazing, but 100 years of good business practice has shown us it's the right thing to do.



**We do right by you**

**Call 01829 771133 for a quote**  
 NFU Mutual Office, West View House, Hatton Heath, Chester CH3 9AU

Provided you own the car, or it's on hire purchase terms. The car must be UK specification. If the model is no longer in production, we will pay out the last known manufacturer's list price. Terms and conditions apply.  
 Agent of The National Farmers Union Mutual Insurance Society Limited.



handling and stable, predictable on-limit behaviour, the engine is also mounted 257mm aft relative to the front wheel centreline. In so doing the front-mid-engined layout shared by all of Aston Martin's current road car range has been taken to a new level.

The One-77's magnificent power unit is an extreme evolution of the 6.0-litre V12 engines fitted to the DBS, DB9 and new V12 Vantage models. Like the collaboration with MTC for the build of the chassis, Aston Martin has chosen a world-leading partner with which to develop the motor: legendary engine builders, Cosworth. It has proved to be the perfect collaboration, as Chris Porritt explains.

"Our brief to the engine team was for them to take the 6.0-litre V12 as far as it could go, both in terms of output and weight reduction. The targets were a power output of no less than 700bhp with a 10 per cent reduction in engine mass. Incredibly, the Aston Martin and Cosworth engineers

achieved a mass reduction of some 25 per cent, and although we've yet to complete the final engine calibration work, I'm confident we'll see in excess of 700bhp. It's an awesome accomplishment, but one that's typical of the One-77 project, for it has consistently brought out the very best in everyone involved."

Wearing Pirelli P Zero Corsa tyres (255/35 ZR20 front, 335/30 ZR20 rear) developed specifically for the One-77, all 700+bhp is transmitted to the road through the rear wheels via a new six-speed gearbox. Controlled via column-mounted paddles behind the steering wheel, this robotised sequential manual is a new generation of Aston Martin's familiar transmission. Though it is made specifically for the One-77 and features specially strengthened internals to cope with the tremendous power and torque, the lessons learned in its development will ultimately find their way into the company's series production models.

>>





## re-enhance

SKIN AND BODY CLINIC

**Dr. Martin Kinsella MBChB, BACD** is a cosmetic doctor and expert on face and body rejuvenation. His Hale clinic offers a full range of cosmetic medical and laser treatments including the following:

- Laser / Smart Lipo™ fat removal
- Macrolane™ breast and buttock enhancement
- RF™ skin tightening
- Laser cellulite reduction
- Laser tattoo removal
- Microdermabrasion
- Sculptra™ liquid facelift
- Anti wrinkle injections
- Fractional CO<sub>2</sub> laser resurfacing
- Dermal fillers
- Vein treatment
- Laser Hair Removal
- Laser skin rejuvenation
- Chemical peels
- Semi-permanent make-up
- Teeth whitening
- Environ® stockist

Registered as an Acute Hospital CQC Reg. No. I-6862224

**Call FREE 0800 077 8092** [info@re-enhance.com](mailto:info@re-enhance.com) [www.re-enhance.com](http://www.re-enhance.com)  
**Re-enhance Skin and Body Clinic** Progress House 17 Cecil Road Hale Cheshire WA15 9NZ



It's a mark of the inherent capabilities of Aston Martin's acclaimed lightweight Carbon Ceramic Matrix brake technology that it has been used as the basis for the One-77's braking system. The internals of the calipers have been re-engineered to transmit less heat from the brake pads into the brake fluid, while the discs themselves have been developed to ensure the maximum possible contact area between the face of the disc and the brake pads for improved stopping power. Due to the One-77's increased performance, special attention has also been paid to brake cooling, as the brakes have less time to cool between bursts of acceleration.

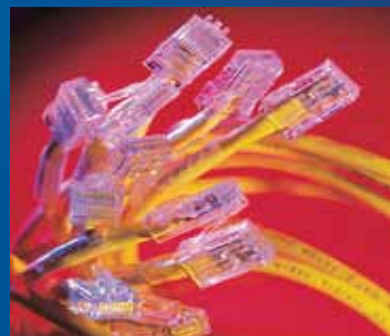
With a projected weight of 1,500kg the One-77 will occupy the very highest echelons of road car performance. Top speed is confidently predicted to be in excess of 200mph, with a 0-60mph time in approximately 3.5sec. Perhaps more importantly, thanks to the purity of a front-engined, rear-drive layout, the responsiveness and immense tractability of a naturally aspirated V12 and the low mass, high-rigidity properties of a carbon fibre chassis, the One-77 promises a driving experience of unrivalled intensity and excitement while representing the world's most desirable automotive art form.



## Bring your home to life



Audio-visual



Networking



TV Installations

# terroso

home technology installations

Tel: 01260 280 252 | email: [info@terroso.co.uk](mailto:info@terroso.co.uk) | [www.terroso.co.uk](http://www.terroso.co.uk)



### We understand health needs

- Completely confidential
- Rapid access to GPs & Specialist Consultants
- No referral necessary
- All medical conditions
- Second opinions
- Blood tests, scans & ECG onsite
- Travel health, DVT checks & vaccinations
- Sexual health
- Advanced pregnancy testing
- Allergy testing
- Medical Certificates
- Medication and Prescriptions onsite
- Flexible appointments
- Convenient city centre location

For more details and to book an appointment, visit [www.pallmallmedical.co.uk](http://www.pallmallmedical.co.uk) or call 0161 832 2111



Pall Mall Medical  
King Street, Manchester

interiormotive

[www.interiormotive.net](http://www.interiormotive.net)



PASSIONATE, CREATIVE AND DARING™

TALENTED DESIGNERS PROVIDING A DIVERSE, SYMPATHETIC AND INTUITIVE INTERIOR DESIGN SERVICE. PLEASE VISIT OUR WEBSITE OR CALL 01244 382792

First Floor Offices, 4 Upper Northgate St. Chester, CH1 4EE  
Interiormotive Design Ltd. ©2008



**Bode**

HOTELS  
Home to Michael Caines  
Restaurants



Two star Michelin chef Michael Caines is one of Britain's most acclaimed chefs, after receiving AA Chef's 'Chef of the Year' in 2007, and awarded an MBE in 2006 for services to the hospitality industry. Michael is a respected mentor on the BBC's 'Great British Menu'. Dine in luxurious surroundings at any ABode Hotel and experience the exquisite tastes they have to offer.

### Sheer indulgence for £99 per person

Why not treat that special person in your life to a night they will never forget. All the frills you'd expect, including a bouquet of flowers and petit fours in your room on arrival, plus champagne followed by a three-course dinner for two in the Michael Caines Restaurant. The following morning enjoy either a Continental Breakfast in your room or a Full English Breakfast at your leisure. We look forward to welcoming you.

**Bode**  
HOTELS



Michael Caines  
Restaurants





## OVER 50,000 VISITORS AT 2010 CHOLMONDELEY PAGEANT OF POWER

The third Cholmondeley Pageant of Power, held on the 17th and 18th July, has been hailed a tremendous success with over 50,000 visitors enjoying a weekend of high powered action in the grounds of this stately home. The central core of the event is a competitive sprint event for cars and motorcycles with other attractions including aerobatics, power boat racing, rally driving and scrambling. This high octane blend has made the Pageant of Power one of the key dates in the national motor sport calendar.







SEEING IS  
BELIEVING

DISCOVER  
A NEW LIFESTYLE  
FROM ONLY  
£119,995

Tel: 0800 731 5769

Y Noddfa Luxury Lodge Park, Rhosfawr, Pwllheli, Gwynedd LL53 6YA  
Email: [info@ynoddfalodgepark.com](mailto:info@ynoddfalodgepark.com) [www.ynoddfalodgepark.com](http://www.ynoddfalodgepark.com)



Protecting vehicles in the UK & Europe since 1973 • Suppliers of all of your vehicles security requirements • Approved suppliers for



## Technologically advanced GPS vehicle tracking system

- » British designed and manufactured
- » Newest tracking system on the market
- » Latest Thatcham approved product
- » Technologically advanced system
- » Developed with recovery rate busting performance in mind

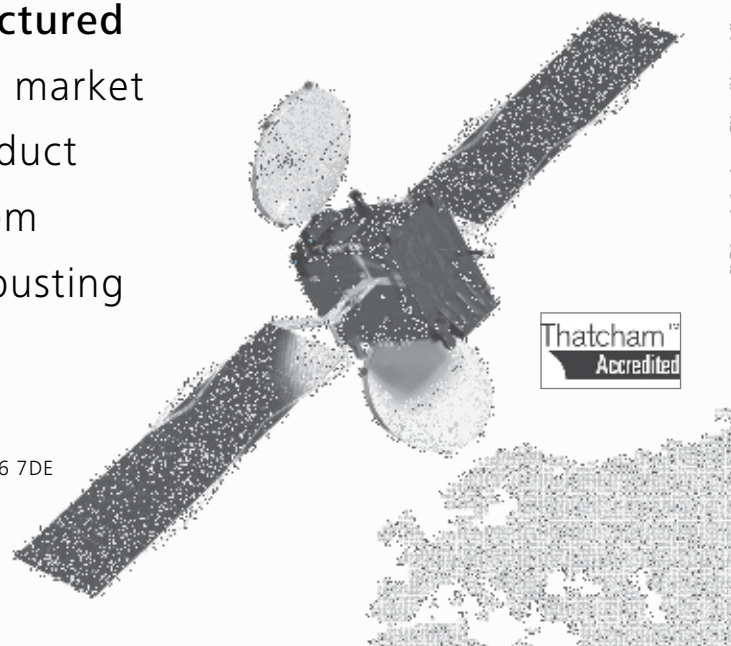
### SCORPION TRACK

Drumhead Road, Chorley North Business Park, Chorley, England, PR6 7DE

PHONE: 44 (0)1257 249928 FAX: 44 (0)1257 249938

E-MAIL: [mail@scorpiontrack.com](mailto:mail@scorpiontrack.com)

WEB: [www.scorpiontrack.com](http://www.scorpiontrack.com) [www.scorpionaauto.com](http://www.scorpionaauto.com)



Highlights of this year's event included a tribute to the highly regarded and much-missed Donington supremo, Tom Wheatcroft with several of his cars taking to the high-speed course. Other show stoppers included the heart-in-the-mouth aerobatic daring of the Breitling Wingwalkers, an awesome Spitfire flypast and the largest military display in the UK this year.

On the track, Tom Wheatcroft's Donington Collection stole the show with the Auto Union and Vanwalls stunning the crowds with speeds belying their vintage. The astonishing Brutus from the Sinsheim Museum in Germany also proved to be a massive draw with its fire-breathing 47 litre BMW aero-engine taken from a WWI fighter aircraft.



CHRONOSWISS



evans & co  
JEWELLERS GOLDSMITHS

39 London Road  
Stockton Heath  
Warrington WA4 6SG  
01925 269 292



Leo Willwer  
finest jewellery

I V S  
Independent Valuation Services



## Your Personal Professional Jeweller

Highly qualified independent jeweller committed to serve all your jewellery needs.

Have your jeweller visit you at your home or choice of venue.

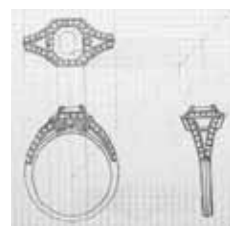
Discuss your requirements - commissions, restoration/repair, valuation all in confidence and with your best intentions in mind.

Valuations completed at your home, at your convenience.

To discuss your wishes today, call 07973 335117  
Ask for Alan Hayes

Jewellery Consultant:

Alan Hayes FGA DGA MIRV  
Macclesfield, Cheshire, SK10 1WS  
Telephone: 01625 500851  
Email: alanhayes@e-ivs.com



Mob: 07973 335117 • www.e-ivs.com



Additionally, a new course record was set by Nicky Falkner, driving the Lamborghini Gallardo LP570-4 Super Leggera, completing the twisting 1.3 mile circuit in 62.68 seconds.

Said James Hall, Event Director: "I calculated that we must have had over half a billion pounds worth of machinery here this year, including the Hermes 135 Eurocopter and alone, one of the pit lanes contained cars with a value of over £15 million."

The Firework Concert that concluded Saturday night, provided all the pomp and circumstance of the Last Night of the Proms, including a linked helicopter fly past in time to Wagner's 'Ride of the Valkyries' and the firing of the Royal Artillery cannons to accompany the 1812 Overture.







# The Dressing Rooms

by Jacqueline Anne



Exclusive Ladies Designer Fashion Boutique featuring Linea Raffaelli Special Occasion Wear and daywear by Stills, Creola, Taviani, Huevo Blanco and Kapalua.

One to one personal service at all times and appointments by prior arrangement.

## The Dressing Rooms

151 Warrington Road  
Penketh  
Warrington  
Cheshire  
WA5 2EN  
Tel: 01925 790750

[www.thedressingrooms.co.uk](http://www.thedressingrooms.co.uk)

# 0 to 135 mph in 45 hours!

Gain your helicopter license in just 45 hours  
(subject to ability)

- Private and Commercial Helicopter Training
- Helicopter Charter
- Helicopter Sales & Management
- Aerial Photography & Filming



## fly helicentre

Helicentre Liverpool Ltd  
Business Aviation Centre, Viscount Drive  
Liverpool John Lennon Airport, Merseyside L24 5GA

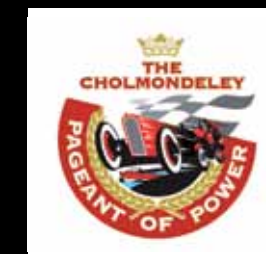
Tel: 0151 448 0388  
Fax: 0151 448 0780  
info@helicentre.com

[www.helicentre.com](http://www.helicentre.com)



Plans are already being contemplated for next year including the possible extension of the event to include Friday as an 'experiential marketing' day for leading motor manufacturers to give their customers an actual driving experience around the famous Cholmondeley race track.

For details go to: [www.cpop.co.uk](http://www.cpop.co.uk)  
or telephone: 01829 772432





# B·A·S

BESPOKE ARCHITECTURAL STRUCTURES

**Bespoke Architectural Structures** are manufactures, suppliers and installers of the highest quality aluminum glazing systems to the domestic and commercial market covering conservatories, orangery's, garden rooms, pool enclosures and commercial facades.

We use extruded aluminum alloy as produced by 'Smart Systems Aluminum' that allows us to become the one stop solution that satisfies the requirements of almost all architects, planners and specifiers.

We are dedicated to supplying only the best quality and service to all our valued clients and you can be assured that once you employ BAS on your glazing project that you are getting the very best.



Tel: 01928 579957 | Fax: 01928 571865 | [www.b-a-s.co.uk](http://www.b-a-s.co.uk)

Unit 3, Sycamore Court, Warrington Road, Manor Park, Runcorn, WA7 1RS



Home Cinema installation and design

Uniquely tailored to suit your environment and tastes, discreet styling with a professional finish

We can integrate with your existing equipment to add new technologies e.g. Blu-Ray, SkyHD, Projectors etc., or start from scratch

Multi-room wireless sound system from Sonos®, play any song in any room. Installation and setup

Call for a free consultation and quote

Call 0151 909 2770

[info@electric-orange.co.uk](mailto:info@electric-orange.co.uk)



[www.electric-orange.co.uk](http://www.electric-orange.co.uk)





# ★10★ great reasons to choose a ★Merlin folding sliding door...



★ **Safe & secure** - Multipoint high security locking to keep you and your home secure

★ **Comfortable** - Unique high performance glass will keep your home cool in the summer and warm in the winter

Just think when the weather does get better you could have a merlin door in your home!

★ **Guaranteed** - Fully guaranteed for 10 years no risk independent warranty provided

★ **Style** - Colour options to suit every taste - no need to just settle for white - over 200 to choose from

★ **Energy efficient** - Combined with the latest glass and weather seals these doors have the highest weather rating available

★ **Superior quality** - Proven superior quality bespoke doors manufactured in Germany

★ **Choice** - Choice of materials and designs - wood, aluminium or a combination of the two giving you more options

★ **Practical** - Finger safe seals to ensure that little fingers do not get injured!

★ **Seamless** - Low thresholds mean no dangerous trip hazards as you walk through the doors to enjoy the outside of your home

★ **Complete peace of mind** - Installed by our own fully trained technicians - no mess guaranteed

You can even choose to incorporate blinds inside the glass! For a range of exclusive doors designed for you and your home call us NOW on 08458 734554.



Merlin Doors | Unit 12 Brook Mill | Parker Street | Macclesfield | Cheshire SK11 7BQ

[www.merlindoors.com](http://www.merlindoors.com)

FPA  
architects

Bespoke Design and Detail



6 George Street Alderley Edge Cheshire SK9 4DH

[info@fparchitects.co.uk](mailto:info@fparchitects.co.uk) 01625 599 605 [www.fparchitects.co.uk](http://www.fparchitects.co.uk)





# BIRCHWOOD INTERIORS

Exceptionally beautiful kitchens, bedrooms & studies

Showroom/Head Office  
 109-113 Mill Street, Macclesfield, Cheshire  
 SK11 6NN  
 Telephone: 01625 501666 Fax: 01625 511909  
[www.birchwoodinteriors.co.uk](http://www.birchwoodinteriors.co.uk)

LUSO - 63 Bridge Street | Manchester City Centre | M3 3BQ

### WELCOME TO LUSO RESTAURANT

Luso is a new 'modern portugese' restaurant on Manchester's Bridge Street that's already picked up a 'best fine dining restaurant' award from Metro. The extensive and inspried menu encompasses traditional Portugese dishes as well as influences from the Portugese colonial diaspora including Macau, Goa, Brazil, Africa and Japan.

Standouts include the Caldo Verde soup, Seafood Cataplana, Salt Cod Gomes Do Sa and Chicken Piri Piri. The large wine list at Luso is exclusively Portugese (bar the champagne) with a choice of wines by the glass and half bottles. You can also sample Portugese beer, mineral water and fruit nectar, a kind of thick fruit juice. Luso is open six days a week for lunch and dinner with a Petiscos (small plates/tapas) menu available at lunchtimes.

Tel: 0161 839 5550  
[www.lusorestaurant.co.uk](http://www.lusorestaurant.co.uk)



## ASTON MARTIN FACTS

- Aston Martin has been independently owned since 2007 by a consortium of two major international investment houses
- In December 2009 Aston Martin celebrated a production milestone as the 50,000th car in 96 years was hand-finished at the global headquarters in Gaydon, Warwickshire
- Aston Martin has the strongest product line-up in its 96 year history: One-77, Rapide, DBS Coupe, DBS Volante, V12 Vantage, DB9 Coupe, DB9 Volante, V8 Vantage Coupe and V8 Vantage Roadster
- Around 85% of the 50,000 Aston Martins produced to date are still on the road
- Aston Martins have featured in 10 James Bond films. Most recently, DBS starred in Quantum of Solace; the second consecutive appearance for DBS after Casino Royale
- Aston Martin maintains a global network of 125 dealerships in 33 countries. As part of the company's ongoing expansion plans Aston Martin has recently entered into Croatia, Poland, the Czech Republic and Taiwan with plans to open in Brazil, Greece, Chile, South Korea and Sweden
- Since 2005 Aston Martin Racing has built and delivered over 100 race cars from GT4 to LMP1 to customers around the world
- Aston Martin is the only manufacturer to offer a race car homologated for all GT classes (GT1 – DBR9, GT2 – Vantage GT2, GT3 – DBRS9, GT4 – Vantage N24/GT4)
- Aston Martin employs 1,600 people globally, 1,300 of which are in the UK: a number which has more than doubled since the beginning of the decade







Laporte  
Merefield  
Chorley  
Lancashire  
PR7 1UR



Welcome to Laporte Automation Ltd, We specialise in the supply and installation of automated gate entry systems, access control equipment and work with specialist gate and railing manufacturers, to provide our customers with an extensive choice of gate styles, and manufacturing materials, so that the end result is an enduring quality product.

If you are considering automating an existing set of gates or require gates and automation or just need a service or repair call **01257 249204** to discuss your requirements and get a quote entirely without obligation, or email us at **pault@laporteltd.com**.

[www.laporteltd.com](http://www.laporteltd.com)



ASTON MARTIN DBS CARBON BLACK



**BESPOKE, PERSONAL AND INDEPENDENT  
FINANCIAL ADVICE THROUGHOUT THE  
NORTHWEST**



**Gee & Watson**

Planning for your financial security

Established 1974

[www.geeandwatson.com](http://www.geeandwatson.com)

**0151 342 6496**

Investments • Retirement Planning • Personal & Corporate Protection Strategies • IHT Mitigation • Wealth Management

Excelsior House, 58 Telegraph Road, Heswall, Wirral CH60 0AG

Authorised and regulated by the Financial Services Authority

[www.lacurtaingalleria.com](http://www.lacurtaingalleria.com)  
Tel: 0151 286 0237



BRIAN YATES ROMO HARLEQUIN Sanderson Cole & Son CHRISTOPHER GUY ANDREW MARTIN NOBILIS OSBORNE & LITTLE





The premier car valeting service covering South Manchester and Cheshire. Established for over 20 years, VIP Car Valeting is by far the most experienced car valeting company in Cheshire. We offer a full range of car valeting services from a wash and vacuum right up to a full car valet using Autoglym products to ensure a top quality finish for your car.

Our professional car valeting service is second to none and we can offer our premium services at your home or place of work. Our fleet of vehicles are all self contained which means they carry their own supply of electricity, water and lighting together with state of the art cleaning equipment required to provide a high quality finish.

If you would prefer to come to us, we are happy to complete all works on site. Based a stones throw away from Manchester Airport, you can even leave your car in for a service/valet while you're away, saving on the cost of airport parking!



## The Swan Inn



In the deep South Cheshire countryside, a stone's throw from Shropshire and within sight of the Welsh border, lies the village of Marbury. At the heart of that village, nestling onto the green and overlooking Little Mere, is an old traditional public house called The Swan Inn.

In the bar you'll find a log fire in the winter, comfortable furniture, blackboards, a dartboard, gentle conversation, easy laughter, and fascinating local history on the walls.

In the restaurant you'll find an inglenook fireplace, elegant furniture, lit candles and fresh cut flowers on the tables, and a scrumptious and very popular menu.

The Swan is about character - among its walls, among its patrons, and among its staff.

In short, if you can find us, you won't be disappointed.

Wrenbury Road • Marbury • Whitchurch • Cheshire • SY13 4LS

[www.theswanatmarbury.co.uk](http://www.theswanatmarbury.co.uk)

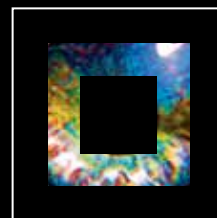
**01948 662220**

MMC Media produce beautiful bespoke promotional publications for clients in the UK and overseas.

To discuss your requirements for promotional brochures, in-house magazines, special event literature or any publicity material please contact:

Chris Shorley, Director:  
(01253) 319882

Steven Streetly, Director:  
(01253) 319883



**mmcmmedia**

Starline House  
130 Mowbray Drive, Blackpool, Lancs FY3 7UR  
Fax: 01253 319884  
[sales@mmcmmedia.com](mailto:sales@mmcmmedia.com)  
[www.mmcmmedia.com](http://www.mmcmmedia.com)



## CATHERALLS

DIAMONDS OF EXCELLENCE

FOR YOUR ENJOYMENT & INVESTMENT FROM  
THE RAREST WHITE TO NATURAL FANCY  
COLOURS  
SOURCING THE VERY FINEST  
BESPOKE DESIGN SERVICE

PLEASE CALL ADRIAN FOR MORE  
INFORMATION ON

0151 638 4270 OR 07810893224  
OR VISIT [WWW.CATHERALLSDIAMONDS.COM](http://WWW.CATHERALLSDIAMONDS.COM)  
81 MILL LANE  
WALLASEY  
WIRRAL  
CH44 5UB

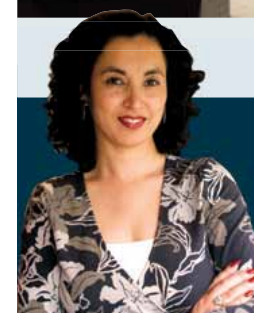


## REBEKAH BAILEY

INTERIORS



*the essence of good design...*<sup>TM</sup>



**REBEKAH BAILEY** Interior Designer  
telephone 01925 766000 mobile 07800 760 343

[info@rebekahbaileyinteriors.com](mailto:info@rebekahbaileyinteriors.com)

A comprehensive interior design service.  
From consultation to planning to finishing  
touches, we can help you every step of the way.

[www.rebekahbaileyinteriors.com](http://www.rebekahbaileyinteriors.com)



# tim fowler garden design

Medal winning designs at  
RHS Chelsea Flower show 2010 and Tatton Park 2009

In addition to my design service I offer full project management,  
ensuring your garden is built to the highest standards,  
completed on time and within budget.

A life long love of plants has brought me to this career,  
using outstanding plants, quality materials and contractors  
I can turn your dream garden into a reality

49 Hill Top Road, Acton Bridge, Cheshire, CW8 3RA  
01606 852240 or 07963 955426 (mobile)  
Email [timsgardens@aol.co.uk](mailto:timsgardens@aol.co.uk)  
[www.timfowलगardenesign.co.uk](http://www.timfowलगardenesign.co.uk)



Lumenata Lighting Design <sup>ltd</sup>

Taking Light  
Seriously

**Award Winning Lighting Design Agency**  
Providing solutions to domestic and commercial construction projects.

**Call Us on: 01772 312 416**  
Visit [www.lumenata.co.uk](http://www.lumenata.co.uk)

pathelighting

Searching the World for Interesting & Exciting Contemporary  
Lighting Products, In One Convenient Place.



Look Through Our Extensive On-Line Catalogue for that Special, Finishing Touch at  
[www.pathelighting.co.uk](http://www.pathelighting.co.uk) or call: 01254 915 893

Stunning lodges, dream locations



New Hampshire

NEXT GENERATION HOMES  
FROM  
WILLERBY



New Jersey



New Hampshire

Escape to the country, or the beach, or a forest, or the lake, or the hills, the list goes on...

With incredible fully furnished lodges available in some of the most amazing locations across the UK  
and Europe you really can escape to your very own retreat and make the most of your valuable  
leisure time in luxury surroundings.

Web: [www.willerbylodges.com](http://www.willerbylodges.com) Email: [lodges@whh.co.uk](mailto:lodges@whh.co.uk) Tel: 01482 713838



PAUL RICHARDS  
GARDEN DESIGN



**We design gardens to be  
as individual as our clients**

TEL: 01704 840868 // WEB: [www.paulrichardsgardendesign.co.uk](http://www.paulrichardsgardendesign.co.uk) // EMAIL: [info@paulrichardsgardendesign.co.uk](mailto:info@paulrichardsgardendesign.co.uk)



## THE DRIVER'S WATCH

The Oyster Perpetual Cosmograph Daytona is the ultimate reference chosen by professionals. On and off the track. Iconic from the moment it was introduced in 1963, the Daytona can perfectly measure elapsed time and calculate average speed. It is as essential as a driver's on-board controls. The Cosmograph Daytona sets the standard for those with a passion for driving and elegance. Visit [ROLEX.COM](https://www.rolex.com). And explore more.

### — THE COSMOGRAPH DAYTONA —



IN 18 CT WHITE GOLD

**cottrills**

13 WATER LANE, WILMSLOW SK9 5AE

[cottrills.com](https://www.cottrills.com)

Watch featured subject to stock availability



**ROLEX**